

26TH ANNUAL

ANGUS BULL SALE

SATURDAY . MARCH 16 . 2024
AT THE FARM | GLENBORO, MB | 1:00 PM



Quality genetics in volume

HAMCO CATTLE CO.

We would like to welcome everyone to our 26th Annual Hamco Bull Sale. We are very appreciative for the great customer support we have received and the many friends we have made over the last 26 years.

The past year has seen record high cattle prices which has been great to see & producers that were able to stay in the cattle business have been rewarded. Feed has been limited in some areas but we were fortunate to receive timely rains. The cattle markets look very good for the next number of years. A great time to add new genetics to your herd.

We are very proud of our bull offering this year. We maintain our herd at about 550 cows (50% Red Angus, 50% Black Angus). We add about 120 heifers per year and cull our herd aggressively. We select our bulls from about 275 bulls born every year. The two year olds are developed the same as our yearlings and are mainly bulls that were too young to sell as yearlings or were held back to sell as 2 year olds.

The selection of a herd bull is a very important decision for your farm as your herd bull contributes 50% of your calf's genetics. For the most part, herd improvement comes from the bulls and it has been estimated that over 80% of herd improvement is directly attributed to bull selection. We feel we can provide the genetics to take your herd in the direction you need to go. We have a good selection of bulls suitable for heifers ***, bulls that would work on cows or well grown out heifers ** and some we recommend only using on cows *

As breeders we believe we should provide as much information as possible so you can make an informed buying decision. We provide you with as much current information as possible in the catalogue. The bulls were weaned October 10, 11, 12, 2023 and were started on a 76 day home test (Nov 17 to Feb 2). The information in this catalogue is current to Feb 2, 2024. Scrotal measurements were also done Feb 2 and at this age yearling bulls will add approximately 1.5 cm per month so the scrotals will be at least 2–2.5 cm larger or more by sale day. Two year old bulls were also weighed and scrotal measured on Feb 2, 2024. Most of the yearling bulls will be about 140 lbs heavier by sale day. Updated scrotals & weights will be available by sale day.

All bulls in the sale will have a satisfactory breeding soundness evaluation prior to the sale. Some bulls catalogued will be out of the sale due to not passing the breeding soundness examination by sale day.

We would like to thank Stewart Bertram, Mark Abbey, Mitchell Graham, & Jeremy Maendael for their hard work and dedication on the farm. We would also like to thank our families and friends for their support and hard work to put on the bull sale.

We are very fortunate to be involved with the Angus breed. An Angus bull is the king of crossbreeding and will provide performance and desirable carcass traits to your herd while maintaining calving ease, high conversion rates, maternal strength, easy fleshing ability and the Angus vigor at birth. The resulting hybrid vigor is still one of the best deals in the cattle industry. Remember all Angus bulls are homozygous polled.

Our program's main target is to produce Angus bulls for the commercial producer and we are honored that our bulls have entered many top commercial programs. Managing a larger herd forces us to think like a commercial producer. We believe we have a number of bulls in this sale that would offer some excellent genetics to purebred herds as well.

Please call us if you have any questions about our bulls or our program. Again this year we will have a video sale in our large heated work shop. The bulls will be penned outside the sale facility & can be viewed prior to and during the sale. The bulls will also be in their pens at the bull yard the days prior to the sale. We encourage you to come prior to the sale to view the sale bulls. Videos of all the bulls will be available to view online about 2 weeks prior to the sale. Not all bulls could be pictured so we encourage you to review them by watching the videos.

Again this year we will have online bidding through DLMS for anyone that is unable to attend the sale. We still have our Sight Unseen Program available and you can bid on the phone if you prefer.

Thank you for the interest in our program and please contact us if you have any questions.



Kyle, Larissa, Glen, Carleen, Nyla, Nova,



Jeremy, Derek, David
Brinley, Julie, Kaitlyn, Sophie, Shelley

The Hamiltons

Saturday March 16, 2024

1:00 pm at Hamco Cattle Co. Glenboro MB

Viewing of the Bulls can take place anytime prior to the sale or **10:30 am sale day** as bulls will be penned outside the sale facility

VIDEO SALE

No Bulls will physically enter the heated sale facility. A video of each bull will be playing at the time he is sold.

1:00 pm Bull Sale

Direct Line to Sale Barn

(204) 824-4420 (4 lines)
(204) 325-3635 David (cell)
(204) 526-5105 Glen (cell)
(204) 526-0705 Larissa (cell)
(204) 526-0457 Kyle (cell)
(204) 280-0359 Kolton (cell)
(204) 371-9093 Derek (cell)
(204) 870-0329 Jonathon (cell)

Directions to the farm

Junction of Hwy 2&5 at Glenboro, go 7 miles south on Hwy 5 to Rd 32W, farm on right side or 6 miles N on Hwy 5 from the junction of 23 & 5 to RD 32W.



Offering 141 Lots

58 Red Angus Yearling Bulls
20 Red Angus 2 year old Bulls
51 Black Angus Yearling Bulls
12 Black Angus 2 year old Bulls

Auctioneer:

Kolton McIntosh, Eriksdale MB (204) 280-0359 (cell)

Ring Men:

Jonathan Karsin (204) 870-0329

Derek Reimer (204) 371-9093

Delayed Payment Plan

We again are offering our Delayed Payment Plan Option. You pay 50% of purchase price on sale day and 50% plus a \$35.00 surcharge due on Dec 1, 2024. (Post dated cheque required sale day for the remaining amount). Registration papers will be transferred when the final payment is made.

Delivery

Free delivery on bulls up to 300 miles & then at cost. As well, we will deliver your bull free to central points in Western Canada or the US border and cost will be shared to Eastern Canada. We will make every effort to get your bull to your farm. Delivery will be close to the date you request, but will be at our convenience. If you can not take your bull when we are in your area, we would appreciate if you made arrangements to pick up your bull. **Haul your own bull on sale day or within 3 days of the sale & receive \$100.00 off each bull.**

Can't make it to the sale? **Watch & Bid Online.**

With DLMS you can Watch, Listen & Bid on your computer just like you were there with online bidding over the internet

Instructions for Viewing And Bidding At the Sale

Visit www.dlms.ca, Fill out the registration form located under registration and sign-up for your free user account to select a username and password.

BIDDERS - To be approved as a bidder, Log in and click BUYER APPROVAL tab, select the sale you are interested in bidding at and click sign up.

For more information or for help getting approved Call:

Whitney Bosovich 780.991-3025 or Mark Shologan - 780-699-5082

Direct Livestock Marketing Systems
We're Making the Connection
DLMS
www.dlms.ca

To find an agent or sale near you today
visit www.dlms.ca

Purebred Sales • Daily Presort Sales
Direct Off-farm Sales every Thursdays at 10:00 am

*Bull Videos will be posted on DLMS website
about 2 weeks before the sale
View Videos on Cattlevids.ca*

--- For More Information ---

Glen & Carleen (204) 827-2358

Larissa & Kyle (204) 526-0705 (cell)

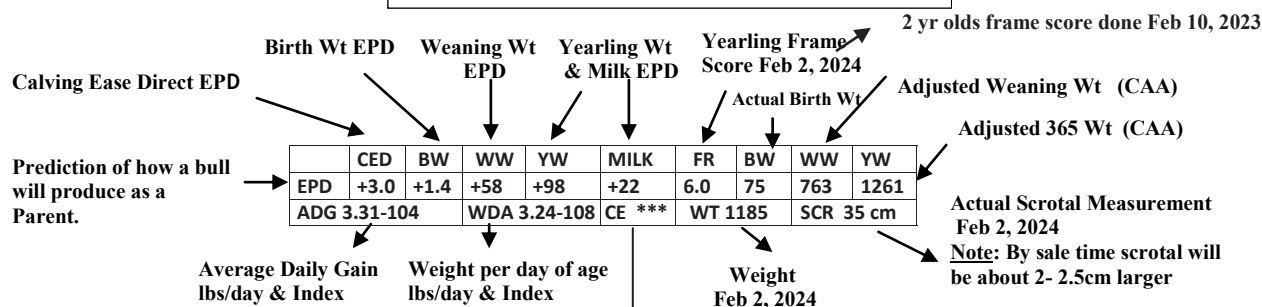
larissa_hamilton@hotmail.com

View Catalogue Online at Hamcocattleco.com

Hamco Cattle Co Box 143 Glenboro, MB R0K 0X0

Dr. David & Shelley
(204) 325-3635 (cell)

How To Read This Catalogue



Calving Ease Code

This is our best estimate based on EPD's, actual birth wt & body shape. Take into consideration your own cow herd genetics, environment & feeding.

* Use on Cows

** Use on Cows & well grown out heifers

*** Very few calving problems when bred to first calf heifers

Frame Score

Is a height measurement at a point directly over the hook bones of the pelvis. That measurement is then put into a formula that adjusts for the age of the bull. Frame score is a convenient way of describing the skeletal size of cattle. Most animals should maintain the same frame score throughout their life while actual height increases with age. No one frame size for an animal will be best for all feed resources, breeding systems & market specifications

EPDs

Calving Ease Direct EPD: Predicts the percentage of unassisted birthings expected from an animal's calves. This EPD reflects a combination of gestational growth and a calf's conformation. The higher the CED EPD, the more likely it is that the animal's calves will be born without assistance.

Birth Weight EPD: Expressed in lbs, predicts on average how much heavier or lighter than the breed average an animal's calves will be at birth.

Weaning Weight EPD: Expressed in lbs, predicts comparative progeny weight at 205 days of age; reflects pre-weaning growth potential that an animal is expected to contribute to its calves.

Yearling Weight EPD: Expressed in lbs, predicts the differences in progeny performance at 365 days; reflects the animals calves' potential for post-weaning growth.

Milk EPD: Expressed in lbs of calf weaned, this is a prediction of an animal's daughter's milking ability.

CANADIAN ANGUS ONE GENETIC EVALUATION

Please note that the EPDs listed in this sale catalogue are the product of the Canadian AngusONE Genetic Evaluation. These EPDs are calculated by Angus Genetics Inc in partnership with the American Angus Association. Therefore, EPDs for Canadian Red Angus, Canadian Black Angus, and American Black Angus animals are directly comparable to each other. This is a completely new base for Canadian Red Angus in 2019, so please be advised that the EPDs are not comparable to 2018 or earlier EPD's for Red Angus. These EPDs are on a completely different scale, so please familiarize yourself with the new Breed Average and with the new threshold number for traits of importance to you. The new AngusONE breed averages are shown below to help you adjust to the new base. Percentile rank graphs for each animal are easy to use and available at www.cdnangus.ca. The right EPD for you will depend on your cow herd, your management, and your breeding goals.

Combined American & Canadian EPD's	CED	BW	WW	YW	Milk
Average EPDs of all <u>Black</u> Angus calves born in 2023	+3.5	+2.0	+54	+95	+23
Average EPDs of all <u>Red</u> Angus calves born in 2023	+2.8	+1.2	+43	+74	+25



Management of Hamco Bulls

The yearling bulls were all born in late Jan, Feb, March of 2023 and were weaned on Oct 10, 11 & 12, 2023. They did not receive any creep feed prior to weaning. The bulls were then developed on a carefully balanced total mixed ration (TMR). On a dry matter basis they were fed 50% alfalfa grass hay, 50% corn silage & the grain (oats, corn & supplement) was gradually increased over the first 2 months. By Dec 25, 2023, the bulls reached their final ration (dry matter basis) consisting of 20% alfalfa grass hay, 45% corn silage, 35% grain mix (corn, oats, peas, canola meal & supplement). The bulls should never have had more than 11 lbs of grain/protein mix per head per day. The TMR ration gives us complete control of the ration and insures that every bull receives the exact same feed. Bulls developed on a high forage TMR ration should never develop acidosis and laminitis, and should be healthy and be able to perform for years. The bulls are developed in a 4 acre pen & get a lot of exercise and should be athletic and ready to breed. We will continue to develop the bulls after the sale. The two year old bulls were similarly managed as yearlings and then maintained on a high forage ration. They were fed a high forage TMR with plenty of exercise in a 20 acre pen. They are not over conditioned and should breed well.

Health Status

This is a healthy group of bulls. They have all received 3 doses of MLV (IBR, BVD I & II, PI3, BRSV, Haemophilus) and 3 doses of 8-way blackleg vaccine. They have been treated with Ivermectin pour on and Clean Up twice. They have received 2 injections of Fusoguard - a foot rot vaccine that is usually effective in preventing foot rot - a condition you would certainly like to avoid in a breeding bull.

Birth—Inforce 3 (Intranasal IBR, PI3, BRSV)

Pre Breeding (April) -(Calves) - MLV IBR/BVD I & II, PI3, BRSV, Pasteurella, & 8-way Blackleg

Pre Breeding—(Cows) - MLV IBR/BVD I & II, PI3, BRSV, Lepto, Cows (late fall) - Scour Vaccine & 8-way Blackleg

Mid July (preg check) -(Calves) Deworming on pasture (Longrange), 8-way Blackleg, IBR, BVD I & II, PI3, BRSV, Haemophilus

Weaning (October 10, 11, 12, 2023)-Ivermectin pour on & 8-way Blackleg & Fusoguard(Foot Rot Vaccine- Bulls)

November 17, 2023 - Fusoguard & IBR, BVD I & II, PI3, BRSV, Haemophilus, test start weights, Clean Up Pour On

February 2, 2024 - Weigh yearlings, scrotal measurements, frame score measurements, Clean Up pour on

February 2, 2024 - Weigh 2 yr olds, scrotal measurements, Clean Up pour on

March 5 & 6, 2024 - Semen test yearlings & 2 year olds (Fusoguard, IBR/BVD I & II, PI3, BRSV, Haemophilus, 8-way Blackleg)

Our whole herd is on a strategic vaccination and parasite control program to insure our bulls stay healthy. However we know BVD is a potentially hidden yet devastating disease, & bulls can be carriers of the BVD virus (both from acute infection & as persistently infected (PI) carriers). Our vaccination program insures that BVD should not be a problem in our bulls. *You can be assured that when you purchase a bull from us that the bull is PI negative and is not a carrier of the BVD virus and he is adequately vaccinated against BVD.* We manage the feeding of the bulls very carefully. With our high forage TMR ration we were able to start the bulls on feed gradually & experienced no digestive upsets. On a 76 day test, the 210 bulls had an ADG of 3.10 and WDA of 3.25. We will continue to develop the bulls after the sale & insure a smooth transition from our ration to the grass based ration they will receive during the breeding season. All potential carriers of genetic defects have been tested, and as far as we are aware there should be no carriers of known genetic defects in the bulls.

Sight Unseen Program

We realize you may not be able to attend our sale in person. You have several options.

- 1) DLMS on line bidding—be sure to register prior to the sale
- 2) On the phone live bidding. Please be sure to call prior to the sale so we can have someone on the phone with you.
- 3) Sight Unseen Program—Those who are interested in this plan are urged to call Larissa or David with your specifications & discuss the offering & will gladly assist you with sale selections & have someone represent you on sale day. Every effort will be made to buy you the right bull or bulls, at the right price to make you a happy, repeat customer. If for any reason you are not satisfied with any of the bulls you purchased on order, you are under no obligations to accept them.
- 4) Contact any of our sales staff to discuss & they can bid on your behalf.

Semen Rights

Hamco would like to retain the right to possibly collect semen from a few bulls in the sale. At the new owners convenience and at our cost we reserve the right to collect semen from any bull in the sale for in herd use only. We can also collect and freeze semen for the new owner if they wish. This can usually be done prior to delivery.

Free Board Till April 15, 2024

We will keep your bull up to April 15, 2024 at no additional charge.

Bulls are managed at the new owner's risk. After April 15, 2024 we can continue to board your bull for \$3.50 day.

Volume Discounts on Bull Purchases

Take advantage of our Volume Discounts on bulls purchased through this sale.

2 bulls -2%	5 bulls-5%	8 bulls-8%
3 bulls -3%	6 bulls-6%	9 bulls-9%
4 bulls -4%	7 bulls-7%	10 bulls-10%

We recommend you take advantage of the Hamco Extended Warranty.

Hamco Bull Warranty

We guarantee to sell you a bull that is structurally sound, & has passed a breeding soundness evaluation. Should the bull fail to be a satisfactory breeder—unable to physically breed a cow or heifer, he will be replaced with a bull of equal value or credit given towards the purchase of another Hamco bull. In the event that your bull is a non-satisfactory breeder, we, the seller, will not, under any circumstances, be responsible for more than the original selling price of the bull in the sale. We will make sure you have a bull to get your cows bred. We however, will not provide replacement or adjustment for physical injury or mismanagement. We do not guarantee that semen collected from these bulls will freeze. To further protect your investment beyond our regular warranty program Hamco is introducing the

Hamco Extended Warranty

While under the Extended Warranty, the regular bull warranty is extended to include injury, sickness or death along with the bull being unable to settle cows.

If a bull is injured and unable to breed, dies or has to be shipped, Hamco will service your needs with a replacement bull of equal value, or a sale credit, or a cash settlement and if necessary a loaner bull will be provided to finish the breeding season.

Should an issue arise with your bull please notify Larissa by phone or email. You will need to contact a licensed Veterinarian to diagnose and treat the bull and fill out a veterinary report.

This extended warranty covers 100% of the purchase price less the salvage value when applicable.

The cost of the extended warranty is 7% of the sale price and is due at time of sale. *Warranty is valid for 1 year.*

REFERENCE SIRE

3 SONS SELL

Red Bieber CL Stockmarket E119

Reg # (Cdn) 2196726

Red LSF Saga 1040Y
S: Red PIE Stockman 4051
Red PIE Lakota 046

Red Andras Fusion R236
D: Red Bieber CL Adelle 475C
Red Bieber Adelle 297Y

CAA	CED	B.W.	W.W.	Y.W.	Milk
EPD	+12.0	-2.6	+60	+107	+29

- * An outcross pedigree. Very popular AI sire.
- * He offers calving ease with great performance and great carcass.
- * Daughters have great udders.
- * He is long bodied with added depth of rib and excellent feet.
- * One of the best Stockman sons to date and stems from the powerful Adelle cow line.



Lot 1

RED HAMCO STOCKMARKET 6L

DSH 6L 2322882 January 31, 2023 (AI)

RED PIE STOCKMAN 4051
RED BIEBER CL STOCKMARKET E119
RED BIEBER CL ADELLE 475C

RED SSS AMSCRAE 582C
RED HAMCO JESSI 485J
RED HAMCO JESSI 12Z

RED LSF SAGA 1040Y
RED PIE LAKTOA 046
RED ANDRAS FUSION R236
RED BIEBER ADELLA 297Y
RED SSS AMBUSH 771X
RED SSS 610X
RED BRYLOR TOAST 30T
RED HAMCO JESSIE 254P

	CED	BW	WW	YW	MILK	FR	BW	WW	YW
EPD	+13	-2.1	+53	+98	+27	5.5	67	679	1130
ADG	2.88-107		WDA 2.87-91		CE ***	WT 1055		SCR 36 cm	

- * Stockmarket 6L is a dark red, wide bodied, very thick bull that is very correct made.
- * Dam Jessi 485J is a well bred Amscrae daughter that did a good job on her first calf. WW 679 lbs- 102
- * Elite calving ease & performance EPDs
- * CED, BW-top 6%, WW, YW, Milk-top 25% or better
- * Good performance on test 2.88-107
- * Highly recommended for heifers.



Lot 2

RED HAMCO STOCKMARKET 63L

DSH 63L 2329202 February 7, 2023 (AI)

RED PIE STOCKMAN 4051
RED BIEBER CL STOCKMARKET E119
RED BIEBER CL ADELLE 475C

RED FRASER PACKER 887F
RED HAMCO JESSI 353J
RED HAMCO JESSI 136G

RED LSF SAGA 1040Y
RED PIE LAKTOA 046
RED ANDRAS FUSION R236
RED BIEBER ADELLA 297Y
RED WILBAR PACKER 383B
FRASER RAMBA 103Y
RED HAMCO PACKER 133Y
RED HAMCO JESSIE 45Y

	CED	BW	WW	YW	MILK	FR	BW	WW	YW
EPD	+7.0	+0.5	+63	+99	+30	5.6	82	746	1181
ADG	2.76-103		WDA 3.06-97		CE ***	WT 1100		SCR 38 cm	

- * Stockmarket 63L a very good, dark red, powerful bull with impressive length, width & depth of body.
- * Dam Jessi 353J is a line bred Packer daughter that did a great job on her first calf WW 746 lbs-111
- * Very good EPDs CED, BW-top 30%, WW, YW, Milk-top 8%
- * Calving ease with great performance
- * Recommended for heifers



Lot 3**RED HAMCO STOCKMARKET 71L**

DSH 71L 2330551 February 8, 2023 (AI)

RED PIE STOCKMAN 4051
RED BIBER CL STOCKMARKET E119
 RED BIBER CL ADELLE 475C

RED LSF SAGA 1040Y
 RED PIE LAKTOA 046
 RED ANDRAS FUSION R236
 RED BIBER ADELLA 297Y
 RED U2 HEAD GAMES 330E
 RED HOWE BIRDIE 52C
 RED HAMCO DOMINOR 79X
 RED HAMCO CROCUS 270B

RED HOWE HEAD GAMES 169G
RED HAMCO CROCUS 198J
 RED HAMCO CROCUS 342F

	CED	BW	WW	YW	MILK	FR	BW	WW	YW
EPD	+9.0	-1.3	+56	+100	+27	5.3	75	680	1158
ADG	3.03-113		WDA 2.92-93		CE ***	WT 1050		SCR 33 cm	

- * Stockmarket 71L is a medium red, deep made bull with a desirable muscle pattern & a good hindquarter.
- * Dam Crocus 198J is a Head Games daughter that did a good job on her first calf WW 680 lbs-112
- * These Stockmarket calves are very good and no wonder he is so popular.
- * Very good EPDs CED, BW, WW, YW-top 10% or better.
- * Again great calving ease & great performance
- * Good performance on test ADG 3.03-113
- * Recommended for heifers.

**Lot 3****REFERENCE SIRE 2 SONS SELL****Red 5L Blazin Steel 6120-81C**

Reg # (Cdn) 2201255

Red BUF CRK The Right Kindu199 Red 5L Double Blaze 1134-8576
 S: Red 5L Red Steel 3521-10A D: Red 5L Sunburst 2705-6120
 Red 5L Lakota 1715-3521 5L Sunburst 792-2705

CAA	CED	B.W.	W.W.	Y.W.	Milk
EPD	+9.0	-2.5	+40	+72	+28

- * Elite calving ease with excellent carcass merit & maternal value.
- * Good, solid feet in depth of heel, foot placement and claw set.
- * Daughters are moderate framed, phenotypically balanced.
- * Pedigree flexibility, balanced EPDs

**Lot 4****RED HAMCO BLAZIN STEEL 22L**

DSH 22L 2324921 February 2, 2023 (AI)

RED 5L RED STEEL 3521-10A
RED 5L BLAZIN STEEL 6120-81C
 RED 5L SUNBURST 2705-6120

RED BUF CRK THE RIGHT KINDU199
 RED 5L LAKOTA 1715-3521
 RED 5L DOUBLE BLAZE 1134-8576
 5L SUNBURST 792-2705
 RED WILBAR HURRICANE 806C
 TOWAW EVENENING TINGE 603B
 RED BIBER MAKIN HAY 9913
 RED HAMCO TIARA 382T

RED TOWAW HURRICANE 460E
RED HAMCO TIARA 195J
 RED HAMCO TIARA 139E

	CED	BW	WW	YW	MILK	FR	BW	WW	YW
EPD	+8.0	-1.9	+52	+88	+31	5.5	74	672	1127
ADG	2.50-96		WDA 2.85-91		CE ***	WT 1045		SCR 35.5 cm	

- * Blazin Steel 22L is a medium red, correct made, straight topped bull with a desirable width & depth.
- * Dam Tiara 195J is a Hurricane daughter that weaned a good calf WW 672 lbs-111
- * Good calving ease EPDs CED, BW, Milk- top 15% WW, YW- top 25%
- * Recommended for heifers.

**Lot 4****Lot 5****RED HAMCO BLAZIN STEEL 49L**

DSH 49L 2324948 February 5, 2023 (AI)

RED 5L RED STEEL 3521-10A
RED 5L BLAZIN STEEL 6120-81C
 RED 5L SUNBURST 2705-6120

RED BIBER DEEP END B597
RED HAMCO MIMI 149J
 RED HAMCO MIMI 198E

RED BUF CRK THE RIGHT KINDU199
 RED 5L LAKOTA 1715-3521
 RED 5L DOUBLE BLAZE 1134-8576
 5L SUNBURST 792-2705
 RED WILBAR HURRICANE 806C
 TOWAW EVENENING TINGE 603B
 RED SSS MAXIMUS 775A
 RED HAMCO MIMI 197B

	CED	BW	WW	YW	MILK	FR	BW	WW	YW
EPD	+9.0	-0.9	+53	+89	+27	5.0	74	700	1182
ADG	3.09-115		WDA 3.00-96		CE ***	WT 1085		SCR 34.5 cm	

- * Blazin Steel 49L is a medium red, correct made, straight topped bull with a desirable Angus head.
- * Dam Mimi 149J is a well bred Deep End bull out of a Maximus 775A cow that did a good job on her first calf WW 700 lbs-104
- * Good performance on test ADG 3.09-115
- * Very good EPDs CED, BW, WW, YW- top 20% or better
- * Recommended for heifers.

REFERENCE SIRE 1 SON SELLS

Red Raml Payload 9500

Reg # (Cdn) 2141837

Red SLGN Wideload 920W Red HXC Conquest 4405P
S: Red Pelton Wideload 78B D: Red Raml Cherokee Maiden 500
Red Pelton Miss Jayla 0508S Red WDZ SRV Fashion 1135

CAA	CED	B.W.	W.W.	Y.W.	Milk
EPD	+4.0	+0.9	+53	+91	+28

- * Payload 9500 is a phenotypic standout! Semex AI sire.
- * Stout & massive, yet a smooth, attractive look with impeccable foot structure & soundness.
- * Payload will improve udder quality, feet & carcass traits



Lot 6

RED HAMCO PAYLOAD 37L

DSH 37L 2324935 February 4, 2023 (AI)

RED PELTON WIDELOAD 78B RED SLGN WIDELOAD 920W
RED RAML PAYLOAD 9500 RED PELTON MISS JAYLA 0508S
RED RAML CHEROKEE MAIDEN 500 RED HXC CONQUEST 4405P
RED WDZ SRV FASHION 1135
RED FRASER PACKER 887F RED WILBAR PACKER 383B
RED HAMCO CARMELLA 194J FRASER RAMBA 103Y
RED HAMCO CARMELLA 59G RED DKF RAZOR 55C
RED HAMCO CARMELLA 82E

	CED	BW	WW	YW	MILK	FR	BW	WW	YW
EPD	0.0	+3.1	+59	+95	+28	5.5	85	674	1116
ADG	2.70-100		WDA 2.82-90		CE *	WT 1025		SCR 36 cm	

- * Payload 37L is medium red, very thick made, deep middled bull with a wide muscular rump.
- * Dam Carmella 194J is a well bred Packer 887F daughter.
- * Payload 9500 is a popular AI sire.
- * Good performance EPD's WW, YW- top 9%
- * Recommended for cows.



REFERENCE SIRE 2 SONS SELL

Red U2 Malbec 195D

Reg # (Cdn) 1916447

Red U-2 Recon 192Y Red Miniburn Copenhagen 3Y
S: Red U-2 Reckoning 149A D: Red U-2 Mabel 60A
Red U-2 Anexa 271Y Red U-2 Mabel 7061T

CAA	CED	B.W.	W.W.	Y.W.	Milk
EPD	+8.0	-2.3	+43	+59	+24

- * A moderate framed, very complete herdbull with generous depth, eye appeal & superior muscle pattern. A popular AI sire.
- * Malbec offers a completely Canadian pedigree & low birth weight.
- * Outstanding Angus character, dark red color & skeletal soundness all the way to the ground.
- * A proven calving ease sire we continue to use in our program



Lot 7

RED HAMCO U2 MALBEC 35L

DSH 35L 2324933 February 4, 2023 (AI)

RED U-2 RECKONING 149A RED U-2 RECON 192Y
RED U2 MALBEC 195D RED U-2 ANEXA 271Y
RED U-2 MABEL 60A RED MINIBURN COPENHAGEN 3Y
RED TOWAW JULIAN 545F RED CU-2 MABEL 7061T
RED HAMCO SALLEE 340J RED FLYING K JULIAN 72Y
RED HAMCO PACKER 86F RED TOWAW MINIATA 110Y
RED HAMCO PACKER 133Y
RED HAMCO SALLEE 397D

	CED	BW	WW	YW	MILK	FR	BW	WW	YW
EPD	+6.0	+0.2	+63	+92	+30	5.3	72	747	1193
ADG	2.50-93		WDA 3.09-98		CE ***	WT 1120		SCR 36.5cm	

- * Malbec 35L is a dark red, thick, deep made bull that is built like a tank with a straight top.
- * Dam Sallee 340J has 2 of our best herd sires up close in the pedigree - Julian 545F and Packer 133Y
- * Very good EPDs CED, BW- top 30%, WW, YW, Milk- top 10%
- * Good calving ease with very good performance.
- * Recommended for heifers.



Lot 8**RED HAMCO MALBEC 7L**

DSH 7L 2322883 January 30, 2023 (AI)

RED U-2 RECKONING 149A

RED U2 MALBEC 195D

RED U-2 MABEL 60A

RED BIEBER CL ATOMIC C218

RED HAMCO JESSI 41J

RED HAMCO JESSI 184G

RED U-2 RECON 192Y

RED U-2 ANEXA 271Y

RED MINIBURN COPENHAGEN 3Y

RED CU-2 MABEL 7061T

RED ANDRAS FUSION R236

RED BIEBER DATELINE 308Y

RED TOWAW KINGMAN 467B

RED HAMCO JESSI 60D

	CED	BW	WW	YW	MILK	FR	BW	WW	YW
EPD	+8.0	-1.6	+50	+79	+31	5.0	68	680	1116
ADG	2.93-109		WDA 2.84-91		CE ***	WT 1045		SCR 37 cm	

* Malbec 7L is a dark red, deep middled, correct made bull with desirable muscle pattern with a desirable Angus head.

* Dam Jessi 41J is a daughter of the very popular Atomic bull that did a good job on her first calf WW 680 lbs -102

* Use with confidence on heifers.

**Lot 8****REFERENCE SIRE 15 SONS SELL****Red Towaw Julian 545F**

Reg # (Cdn) 2068127

Red Tongueriver Jubilation

S: Red Flying K Julian 72Y

Red Flying K Tammy 15W

Red Shoderee Lancer 133P

D: Red Towaw Miniata 110Y

Red Towaw Miniata 218J

CAA	CED	B.W.	W.W.	Y.W.	Milk
EPD	+3.0	+3.2	+66	+116	+30

* Julian 545F was our pick from the Towaw 2020 Sale. Very good maternal genetics.

* A very impressive looking bull with good thickness, length & depth & very good feet.

* Great EPD WW, YW- top 1% Milk- top 8%

* He has sired a lot of calves including our high selling bull in our 2022 sale.

* Phenotypically very correct with very good feet.

* Still breeding well in our herd at 6 years of age.

**Lot 9****RED HAMCO JULIAN 273L**

DSH 273L 2343631 March 6, 2023

RED FLYING K JULIAN 72Y

RED TOWAW JULIAN 545F

RED TOWAW MINIATA 110Y

RED TOWAW KINGMAN 467B

RED HAMCO TRINA 286G

RED HAMCO TRINA 121D

RED TONGUERIVER JUBILATION

RED FLYING K TAMMY 15W

RED SHODEREE LANCER 133P

RED TOWAW MINIATA 218J

RED TOWAW KINGMAN 157Z

RED TOWAW SYBIL 127Z

RED BRYLOR RED KODIAK 3A

RED MJ TRINA 6N

	CED	BW	WW	YW	MILK	FR	BW	WW	YW
EPD	+2.0	+3.0	+55	+94	+35	5.9	89	726	1312
ADG	3.47-129		WDA 3.51-112		CE *	WT 1170		SCR 35 cm	

* WOW! Here is an impressive, top end Julian son—dark red, good hair, deep ribbed, thick made, well muscled bull.

* Dam Trina 286G is a very well bred Kingman daughter that has done it again. She produced a top end bull last year that sold to Duane Zimmer. She also has a daughter in the herd.

* Very good performance EPDs WW, YW, Milk—top 10% or better.

* Very good performance on test ADG 3.47-129 WDA 3.51-112

* Recommended for cows.

**Lot 9****Lot 10****RED HAMCO JULIAN 131L**

AGH 131L 2330639 February 19, 2023

RED FLYING K JULIAN 72Y

RED TOWAW JULIAN 545F

RED TOWAW MINIATA 110Y

RED BIEBER DEEP END B597

RED HAMCO INSTINCT 6G

RED HAMCO INSTINCT 4A

RED TONGUERIVER JUBILATION

RED FLYING K TAMMY 15W

RED SHODEREE LANCER 133P

RED TOWAW MINIATA 218J

RED BIEBER ROLLIN DEEP Y118

RED BIEBER LAURA 158W

RED VII DOMINOR 2N

RED HAMCO BASIC INSTINCT 22Y

	CED	BW	WW	YW	MILK	FR	BW	WW	YW
EPD	+8.0	+0.7	+63	+108	+27	5.7	77	693	1252
ADG	3.32-124		WDA 3.33-106		CE ***	WT 1160		SCR 34.5 cm	

* Julian 131L is a top end, dark red, deep middled, very well muscled bull with desirable thickness.

* Dam Instinct 6G is a very good Deep End daughter that did a good job raising this calf. 693 lbs- 106

* Very good EPDs CED-top 15%, WW, YW-top 2%

* Very good performance on test ADG 3.32-124 WDA 3.33-106

* Recommended for heifers.

**Lot 10**

Lot 11 **RED HAMCO JULIAN 112L**

DSH 112L 2330620 February 15, 2023

RED FLYING K JULIAN 72Y
RED TOWAW JULIAN 545F
 RED TOWAW MINIATA 110Y

RED SSS MAXIMUS 775A
RED HAMCO INDIGO 204E
 RED HAMCO INDIGO 402B

RED TONGUERIVER JUBILATION
 RED FLYING K TAMMY 15W
 RED SHODEREE LANCER 133P
 RED TOWAW MINIATA 218J
 RED FLYING K MAX 159Y
 RED SSS MAXZEEN 646X
 RED HAMCO IDEAL 227T
 RED INDIGO OF KINARED 17X

	CED	BW	WW	YW	MILK	FR	BW	WW	YW
EPD	-3.0	+4.7	+60	+99	+29	6.4	100	700	1252
ADG 3.47-129	WDA 3.38-108		CE *	WT 1190		SCR 34 cm			

- * Julian 112L is a very good, medium red, powerfully built bull with good depth & a wide muscular rump & good hair.
- * Dam Indigo 204E is another good Maximus 775A daughter who did a good job raising her first calf 700 lbs -103
- * Very good performance on test ADG 3.47-129 WDA 3.38-108
- * She has 3 daughters retained in the herd.
- * He will calve fine when used on cows.

**Lot 11****Lot 12** **RED HAMCO JULIAN 153L**

DSH 153L 2330679 February 22, 2023 (TWIN)

RED FLYING K JULIAN 72Y
RED TOWAW JULIAN 545F
 RED TOWAW MINIATA 110Y

RED BROWN JYJ REDEMPTION Y1334
RED HAMCO TIARA 216G
 RED HAMCO TIARA 103Y

RED TONGUERIVER JUBILATION
 RED FLYING K TAMMY 15W
 RED SHODEREE LANCER 133P
 RED TOWAW MINIATA 218J
 RED BECKTON NEBULA P P707
 RED JYJ MS JOLENE W16
 RED BADLANDS NET WORTH 23U
 RED HAMCO TIARA 382T

	CED	BW	WW	YW	MILK	FR	BW	WW	YW
EPD	-0.5	+3.3	+61	+107	+29	5.3	78 tw	717	1138
ADG 3.24-121	WDA 3.13-100		CE *	WT 1080		SCR 35 cm			

- * Julian 153L is another dark red, powerful, wide bodied, deep ribbed bull that is built like a tank.
- * Dam Tiara 216G is a good Redemption daughter that produced a bull to EUR Ranches.
- * Very good performance EPDs WW, YW, Milk-top 8% or better.
- * Good performance on test ADG 3.24-121
- * Recommended for cows.

**Lot 12****Lot 13** **RED HAMCO JULIAN 133L**

DSH 133L 2330642 February 20, 2023

RED FLYING K JULIAN 72Y
RED TOWAW JULIAN 545F
 RED TOWAW MINIATA 110Y

RED HAMCO PACKER 133Y
RED HAMCO INDIGO 203F(ELITE)
 RED HAMCO INDIGO 402B

RED TONGUERIVER JUBILATION
 RED FLYING K TAMMY 15W
 RED SHODEREE LANCER 133P
 RED TOWAW MINIATA 218J
 RED MESSMER PACKER S008
 RED HAMCO MIMI 520W
 RED HAMCO IDEAL 227T
 RED INDIGO OF KINARED 17X

	CED	BW	WW	YW	MILK	FR	BW	WW	YW
EPD	0.0	+3.3	+66	+106	+36	5.7	93	770	1279
ADG 3.36-125	WDA 3.53-113		CE *	WT 1225		SCR 37.5cm			

- * Julian 133L is a top end, dark red, bigger framed bull with excellent width & muscle.
- * Dam Indigo 203F is out of our great cow maker bull Packer 133Y who is a CAA Elite cow that has produced a full brother to this bull to Barry McNabb, a bull to Blair Brigden & a 2 year old son sells in this sale (Lot 216)
- * Very good performance EPDs WW, YW, Milk-top 2% or better.
- * Very good performance on test ADG 3.36-125 WDA 3.53-113
- * Missed picturing this bull. See him live or on the video. He is very good.
- * Recommended for cows.

**Lot 14****Lot 14** **RED HAMCO JULIAN 136L**

DSH 136L 2330645 February 20, 2023

RED FLYING K JULIAN 72Y
RED TOWAW JULIAN 545F
 RED TOWAW MINIATA 110Y

RED BIEBER FEDERALIST B543
RED HAMCO MARIE 202F
 RED HAMCO MARIE 188W

RED TONGUERIVER JUBILATION
 RED FLYING K TAMMY 15W
 RED SHODEREE LANCER 133P
 RED TOWAW MINIATA 218J
 RED ANDRAS FUSION R236
 RED BASIN PRIMROSE OT43
 RED CHOPPER K TOP DESIGN 64R
 RED HAMCO MARIE 415T

	CED	BW	WW	YW	MILK	FR	BW	WW	YW
EPD	+10	-0.5	+47	+82	+28	5.2	74	635	1054
ADG 2.47-92	WDA 2.91-93		CE ***	WT 1010		SCR 34.5cm			

- * Julian 136L is a dark red, correct made, typical Julian 545F son with desirable width & muscle.
- * Dam Marie 202F is a good Federalist daughter that produced a bull to David Dyck last year and a daughter retained.
- * Very good calving ease & performance. EPDs- all top 35% or better CE-top 9%
- * Recommended for heifers.

Lot 15**RED HAMCO JULIAN 240L**

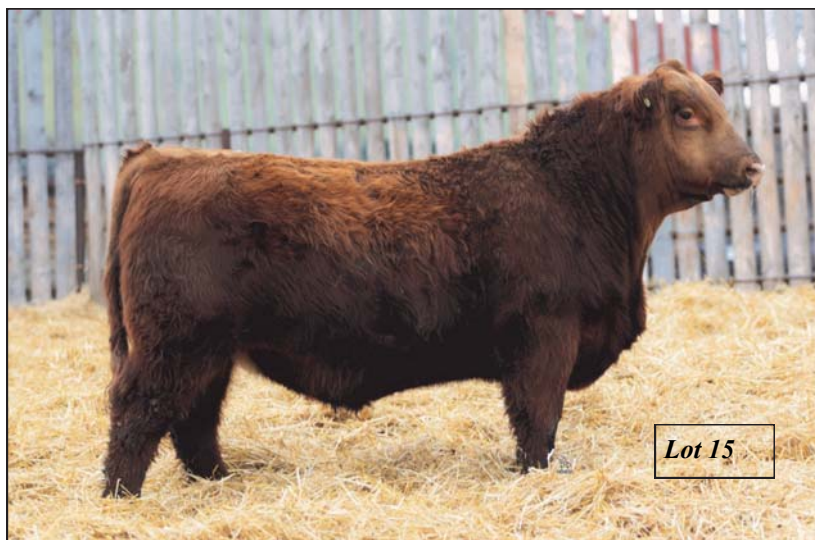
DSH 240L 2343703 March 4, 2023

RED FLYING K JULIAN 72Y
RED TOWAW JULIAN 545F
 RED TOWAW MINIATA 110Y
 RED TOWAW KINGMAN 467B
RED HAMCO ESIA 365E
 RED HAMCO ESIA 156B

RED TONGUERIVER JUBILATION
 RED FLYING K TAMMY 15W
 RED SHODEREE LANCER 133P
 RED TOWAW MINIATA 218J
 RED TOWAW KINGMAN 157Z
 RED TOWAW SYBIL 127Z
 RED LAZY MC CC DETOUR 2W
 RED HAMCO ESIA 13U

	CED	BW	WW	YW	MILK	FR	BW	WW	YW
EPD	+6.0	+0.9	+44	+75	+34	5.4	82	639	1183
ADG	3.24-121		WDA 3.19-102	CE **	WT 1070		SCR 36 cm		

- * Julian 240L is stamped the same as his brothers—dark red, deep middled, wide bodied and structurally correct.
- * Dam is a well bred Kingman daughter out of a Detour dam. She has a heifer retained.
- * Good EPDs- all top 45% or better.
- * Good performance on test ADG 3.24-121
- * Recommended for cows or well grown out heifers.

**Lot 15****Lot 16****RED HAMCO JULIAN 233L**

DSH 233L 2336085 March 3, 2023

RED FLYING K JULIAN 72Y
RED TOWAW JULIAN 545F
 RED TOWAW MINIATA 110Y
 RED WILDMAN XEMPT 422B
RED HAMCO MIMI 344G
 RED HAMCO MIMI 134A

RED TONGUERIVER JUBILATION
 RED FLYING K TAMMY 15W
 RED SHODEREE LANCER 133P
 RED TOWAW MINIATA 218J
 RED JENSEN SKY 611X
 RED IVOMA BARON BEAUTY 10P
 RED LJC MISSION STATEMENT P27
 RED HAMCO MIMI 126R

	CED	BW	WW	YW	MILK	FR	BW	WW	YW
EPD	+5.0	+1.4	+40	+73	+30	5.1	83	609	1051
ADG	2.76-103		WDA 2.83-90	CE *	WT 950		SCR 33.5cm		

- * Julian 233L is another typical Julian 545F son that is a correct made bull with good depth, wide & thickness & good hair.
- * Dam Mimi 344G is a well bred proven cow with a full brother to this bull selling to Lee Wirgau in last years sale & we have retained a son to use in our herd.
- * Balanced EPDs- all top 50% or better.
- * Recommended for cows.

**Lot 17****Lot 17****RED HAMCO JULIAN 176L**

DSH 176L 2335526 February 25, 2023

RED FLYING K JULIAN 72Y
RED TOWAW JULIAN 545F
 RED TOWAW MINIATA 110Y
 RED BRYLOR RSTD HIGH CAPACITY
RED HAMCO LAURA 125D
 RED LRH LAURA 95P

RED TONGUERIVER JUBILATION
 RED FLYING K TAMMY 15W
 RED SHODEREE LANCER 133P
 RED TOWAW MINIATA 218J
 RED BJR HIGH CAPACITY 008
 RED BRYLOR BONITA 36J
 RED BRYLOR JR 25L
 RED LEADHAM EBV 69M

	CED	BW	WW	YW	MILK	FR	BW	WW	YW
EPD	+6.0	+0.9	+55	+92	+28	6.1	87	726	1122
ADG	2.76-103		WDA 3.16-101	CE **	WT 1080		SCR 34 cm		

- * Julian 176L is a very good, dark red, deep ribbed, wide bodied bull with good muscle.
- * Dam Laura 125D is a High Capacity daughter out of our foundation cow Laura 95P. She has produced sons to Dave Fehr, Ed & Karl Grift, James Stone
- * Good EPDs- all top 40% or better
- * Recommended for cows or well grown out heifers.

Lot 18**RED HAMCO JULIAN 274L**

DSH 274L 2343735 March 6, 2023

RED FLYING K JULIAN 72Y
RED TOWAW JULIAN 545F
 RED TOWAW MINIATA 110Y
 RED HAMCO DOMINOR 79X
RED HAMCO CROCUS 342F
 RED HAMCO CROCUS 270B

RED TONGUERIVER JUBILATION
 RED FLYING K TAMMY 15W
 RED SHODEREE LANCER 133P
 RED TOWAW MINIATA 218J
 RED VII DOMINOR 2N
 RED LEADHAM CARMELLA 22H(ELITE)
 RED BRYLOR WEST JET 69W
 RED HAMCO CROCUS 242S

	CED	BW	WW	YW	MILK	FR	BW	WW	YW
EPD	-2.0	+4.6	+51	+91	+27	5.9	98	662	1230
ADG	3.09-115		WDA 3.32-106	CE *	WT 1105		SCR 35 cm		

- * Julian 274L is a dark red, deep middled bull with good length & added muscle.
- * Dam Crocus 342F is a proven cow with 2 daughters retained.
- * Good performance EPDs WW, YW, Milk- top 25% or better.
- * Good performance on test ADG 3.09-115 WDA 3.32-106
- * Recommended for cows.

**Lot 18**

Lot 19 RED HAMCO JULIAN 132L

DSH 132L 2330640 February 19, 2023

RED FLYING K JULIAN 72Y
RED TOWAW JULIAN 545F
 RED TOWAW MINIATA 110Y

RED TOWAW KINGMAN 467B
RED HAMCO TIARA 376G
 RED HAMCO TIARA 27D

RED TONGUERIVER JUBILATION
 RED FLYING K TAMMY 15W
 RED SHODEREE LANCER 133P
 RED TOWAW MINIATA 218J
 RED TOWAW KINGMAN 157Z
 RED TOWAW SYBIL 127Z
 RED BRYLOR RED KODIAK 3A
 RED HAMCO TIARA 237B

	CED	BW	WW	YW	MILK	FR	BW	WW	YW
EPD	+5.0	+1.8	+57	+98	+34	5.1	83	718	1203
ADG	2.80-104		WDA 3.15-101		CE **	WT 1135		SCR 33 cm	

- * Julian 132L is a dark red, very good bull with a desirable muscle pattern & thickness throughout.
- * Dam Tiara is a good Kingman daughter that has 2 sisters retained & did a great job again on this bull WW 718 lbs -110
- * Good performance EPDs WW, YW, Milk- top 8% or better
- * Good performance on test.
- * Recommended for cows or well grown out heifers.

**Lot 19****Lot 20 RED HAMCO JULIAN 217L**

DSH 217L 2343687 March 1, 2023

RED FLYING K JULIAN 72Y
RED TOWAW JULIAN 545F
 RED TOWAW MINIATA 110Y

RED CCC TOWAW EXCEL 34Z
RED HAMCO PRILARK 156C
 RED HAMCO PRILARK 167Z

RED TONGUERIVER JUBILATION
 RED FLYING K TAMMY 15W
 RED SHODEREE LANCER 133P
 RED TOWAW MINIATA 218J
 RED GLEBAR EXCEL 73W
 RED TOWAW FAYETTE 9W
 RED BASIN SENSATION 702E
 RED LRH 154G MISS CLASSIC 112K

	CED	BW	WW	YW	MILK	FR	BW	WW	YW
EPD	+4.0	+2.2	+46	+79	+31	6.1	89	634	1217
ADG	3.24-121		WDA 3.25-104		CE *	WT 1100		SCR 33 cm	

- * Julian 217L is an impressive dark red, thick made bull with desirable width & muscle.
- * Dam Prilark 156C is a proven cow that has a son selling in this sale as a 2 yr old (Lot 215), and has produced a son to Abe Driedger.
- * Balanced EPDs- all top 45% or better.
- * Very good performance on test ADG 3.24-121
- * Recommended for cows.

**Lot 20****Lot 21 RED HAMCO JULIAN 318L**

AGH 318L 234369 March 9, 2023

RED FLYING K JULIAN 72Y
RED TOWAW JULIAN 545F
 RED TOWAW MINIATA 110Y

RED HAMCO DOMINOR 79X
RED HAMCO ISABELLE 381F
 RED HAMCO ISABELLE 104A

RED TONGUERIVER JUBILATION
 RED FLYING K TAMMY 15W
 RED SHODEREE LANCER 133P
 RED TOWAW MINIATA 218J
 RED VII DOMINOR 2N
 RED LEADHAM CARMELLA 22H(ELITE)
 RED FINE LINE MULBERRY 26P
 RED HAMCO ISABELLE 132T

	CED	BW	WW	YW	MILK	FR	BW	WW	YW
EPD	+6.0	+1.7	+52	+93	+28	5.0	85	707	1156
ADG	2.63-98		WDA 3.21-102		CE **	WT 1060		SCR 35 cm	

- * Julian 318L is a medium red, thick, correct made bull.
- * These 15 Julian sons are a very impressive group of bulls. Almost all of the Julians made the cut to make the sale.
- * Dam Isabelle 381F is a Dominor daughter out of a Mulberry cow. She has produced bulls to Bow Island Grazing, Cameron Friesen & a daughter is retained in the herd.
- * Balanced EPDs- all top 50% or better WW, YW-top 15%
- * Recommended for cows or well grown out heifers.

**Lot 21****Lot 22 RED HAMCO JULIAN 109L**

DSH 109L 2330617 February 15, 2023

RED FLYING K JULIAN 72Y
RED TOWAW JULIAN 545F
 RED TOWAW MINIATA 110Y

RED TOWAW ZEPPELIN 578B
RED HAMCO SALLEE 158G
 RED HAMCO SALLEE 57E

RED TONGUERIVER JUBILATION
 RED FLYING K TAMMY 15W
 RED SHODEREE LANCER 133P
 RED TOWAW MINIATA 218J
 RED WINDY HILL ZEPPELIN 1240Z
 RED TOWAW STAR 116T
 RED LAZY MC CC DETOUR 2W
 RED HAMCO SALLEE 179C

	CED	BW	WW	YW	MILK	FR	BW	WW	YW
EPD	+8.0	+0.5	+51	+81	+30	5.2	79	676	1120
ADG	2.71-101		WDA 3.04-97		CE ***	WT 1070		SCR 36.5 cm	

- * Julian 109L is a dark red, very good bull with extra width & thickness with a desirable Angus head.
- * Dam Sallee 158G is a good Zeppelin daughter out of a Detour cow. Impressive WW on her first calf 676 lbs-103. A full brother sold to Dennis Dion in last years sale.
- * Very good EPDs- all top 35% or better
- * Recommended for heifers

Lot 23**RED HAMCO JULIAN 171L**

DSH 171L 2335523 February 25, 2023

RED FLYING K JULIAN 72Y
RED TOWAW JULIAN 545F
 RED TOWAW MINIATA 110Y

RED ANDRAS NEW DIRECTION R240
RED HAMCO SUSIE 47G
 RED HAMCO SUSIE 337E

RED TONGUERIVER JUBILATION
 RED FLYING K TAMMY 15W
 RED SHODEREE LANCER 133P
 RED TOWAW MINIATA 218J
 ANDRAS IN FOCUS B152
 ANDRAS KURUBA B111
 RED TOWAW KINGMAN 467B
 RED HAMCO SUSIE 427B

	CED	BW	WW	YW	MILK	FR	BW	WW	YW
EPD	+7.0	+0.7	+41	+77	+31	5.1	78	589	1139
ADG	3.47-129		WDA 2.98-95		CE ***	WT 1020		SCR 33 cm	

- * Julian 171L is a dark red, very good son of our valuable herd sire Julian 545F. He has a desirable Angus head with excellent depth & width.
- * Dam Susie 47G is a well bred New Direction daughter out of a Kingman cow that has produced bulls to Denbie Ranch & a full brother to this bull in last years sale to Brian Ellis.
- * Good EPDs- all top 50% or better.
- * Good performance on test ADG 3.47-129
- * Recommended for heifers.

**Lot 23****REFERENCE SIRE 1 SON SELLS****Red 9 Mile Franchise 6305**

Reg # (Cdn) 2017139

Spur Franchise 7070 Red TR Colt 45 UT806
 S: Spur Franchise of Garton D: Red C-Bar Abigrace Y11
 H&H Irene Lass 0135 Red C-Bar & Brown Abigrace

CAA	CED	B.W.	W.W.	Y.W.	Milk
EPD	+10.0	-2.4	+42	+85	+39

- * A calving ease sire who excels for phenotype & carcass merit.
- * His phenotype is very impressive with extra muscle shape & eye appeal.
- * He offers an outcross pedigree to many of today's popular pedigrees
- * Top 1% CBI (Canadian Balanced Index)

**Lot 24****RED HAMCO 9 MILE FRANCHISE 73L**

DSH 73L 2330553 February 8, 2023 (AI)

SPUR FRANCHISE OF GARTON
RED 9 MILE FRANCHISE 6305
 RED C-BAR ABIGRACE Y11

RED TOWAW JULIAN 545F
RED HAMCO MIMI 390J
 RED HAMCO MIMI 306F

SPUR FRANCHISE 7070
 H&H IRENE LASS 0135
 RED TR COLT 45 UT806
 RED C-BAR & BROWN ABIGRACET714
 RED FLYING K JULIAN 72Y
 RED TOWAW MINIATA 110Y
 RED HAMCO PACKMAN 41B
 RED HAMCO MIMI 181A

	CED	BW	WW	YW	MILK	FR	BW	WW	YW
EPD	+7.0	-0.8	+44	+79	+33	+5.0	71	604	1152
ADG	3.68-137		WDA 2.81-90		CE ***	WT 1010		SCR 35 cm	

- * Franchise 73L is a dark red, moderate framed, deep middled, thick made bull that is built like a tank.
- * Dam Mimi 390J is a promising, well bred young cow with very good maternal genetics.
- * 9 Mile Franchise 6305 is a very popular AI sire that ranks in the top 1% CBI (Canadian Balanced Index)
- * CED, BW- top 20% or better. Good performance on test ADG 3.68-137
- * Very Good maternal genetics. Daughters will be keepers.
- * Recommended for heifers.

**Lot 24**

REFERENCE 4 SONS SELL

Red SSS Rascal 75H

Reg # (Cdn) 2182951

Red SSS Contender 121B Red SSS Soldier 365W
S: Red SSS Grit 503F D: Red SSS Blockanna 164Y
Red SSS Scaara 382Z Red SSS Blockanna 412W

CAA	CED	B.W.	W.W.	Y.W.	Milk
EPD	+2.0	+1.5	+46	+84	+28

- * Rascal 75H was our pick from the strong program at Triple S. His 3/4 brother Red SSS Granite 74H sold in the same sale for \$64,000.
- * Rascal combines style, balance & structural correctness in a moderate framed easy fleshing phenotype.
- * He stamps his calves very consistently & they are the right kind.
- * Looking forward to his daughters calving shortly.



Lot 25

RED HAMCO RASCAL 272L

DSH 272L 2336251 March 6, 2023

RED SSS GRIT 503F RED SSS CONTENDER 121B
RED SSS RASCAL 75H RED SSS SCAARA 382Z
RED SSS BLOCKANNA 164Y RED SSS SOLDIER 365W
RED TOWAW ZEPPELIN 578B RED SSS BLOCKANNA 412W
RED HAMCO ESIA 125F RED WINDY HILL ZEPPELIN 1240Z
RED HAMCO ESIA 145D RED TOWAW STAR 116T
RED ANDRAS NEW DIRECTION R240
RED HAMCO ESIA 156B

	CED	BW	WW	YW	MILK	FR	BW	WW	YW
EPD	+7.0	-0.5	+35	+64	+29	5.2	76	567	1075
ADG	3.05-114		WDA 2.89-92		CE ***	WT 962		SCR 36 cm	

- * Rascal 272L is a very good, dark red, straight topped, correct made bull with a thick well muscled rump & a nice Angus head.
- * Dam Esia 125F is a well bred cow that has 2 daughters retained in the herd.
- * Good calving ease CED, BW-top 20%
- * Very good performance on test ADG 3.05-114
- * Recommended for heifers



Lot 26

RED HAMCO RASCAL 283L

DSH 283L 2337659 March 7, 2023

RED SSS GRIT 503F RED SSS CONTENDER 121B
RED SSS RASCAL 75H RED SSS SCAARA 382Z
RED SSS BLOCKANNA 164Y RED SSS SOLDIER 365W
RED LAZY MC CC DETOUR 2W RED SSS BLOCKANNA 412W
RED HAMCO ROSE 37Z RED RMJ REDMAN 1T
RED HAMCO ROSE 470X RED LAZY MC BESS 12S
RED SSS EQUAL 508N
RED HAMCO GM ROSE RH 72P

	CED	BW	WW	YW	MILK	FR	BW	WW	YW
EPD	+1.0	+2.5	+36	+62	+25	5.1	94	625	1144
ADG	3.26-122		WDA 3.01-96		CE *	WT 1000		SCR 32.5cm	

- * Rascal 283L is a dark red, moderate framed bull with a good, wide muscular rump with a desirable Angus head.
- * Dam Rose 37Z is a valuable proven cow that has produced bulls to Melnychuk Bros, Mark Lebeau, Gamache Farms & 4 retained daughters.
- * Good performance on test ADG 3.62-122
- * Recommended for cows



Lot 27

RED HAMCO RASCAL 249L

DSH 249L 2350817 March 4, 2023

RED SSS GRIT 503F RED SSS CONTENDER 121B
RED SSS RASCAL 75H RED SSS SCAARA 382Z
RED SSS BLOCKANNA 164Y RED SSS SOLDIER 365W
RED WILDMAN XEMPT 422B RED SSS BLOCKANNA 412W
RED HAMCO SAL 320F RED JENSEN SKY 611X
RED HAMCO SAL 362X RED IVOMA BARON BEAUTY 10P
RED HAMCO IDEAL 227T
RED HAMCO SAL 303R

	CED	BW	WW	YW	MILK	FR	BW	WW	YW
EPD	+2.0	+1.9	+30	+61	+26	5.2	87	567	1100
ADG	3.08-115		WDA 2.94-94		CE *	WT 984		SCR 33.5cm	

- * Rascal 249L is a medium red, correct made, impressive bull with a nice Angus head.
- * Dam Sal 320F is a good Xempt daughter that has produced a bull to Denbie Ranch & a daughter retained.
- * Very good performance on test ADG 3.08-115
- * Recommended for cows

Lot 28 **RED HAMCO RASCAL 338L**
DSH 338L 2338223 March 11, 2023

RED SSS GRIT 503F
RED SSS RASCAL 75H
RED SSS BLOCKANNA 164Y

RED NCJ MOONSHINE 21Z
RED HAMCO STRIKER 45C
RED HAMCO STRIKER 83A

RED SSS CONTENDER 121B
RED SSS SCAARA 382Z
RED SSS SOLDIER 365W
RED SSS BLOCKANNA 412W
RED CROWFOOT MOONSHINE 8081U
RED LAZY MC MISS 1U
RED U-2 DYNAMO 7021T
RED HAMCO STRIKER 445Y

	CED	BW	WW	YW	MILK	FR	BW	WW	YW
EPD	-2.0	+3.1	+55	+93	+26	6.3	92	740	1184
ADG	2.78-103		WDA 3.31-105		CE *	WT 1000		SCR 37 cm	

- * Rascal 338L is a very good, dark red, bigger framed, showy bull that catches your eye in the pen & is hard to fault.
- * Dam Striker 45C is a proven Moonshine cow who has produced bulls to Todd Nichol, Kelly McElroy & 2 daughters retained.
- * Did a good job raising this bull WW 740 lbs—112
- * Very good performance EPD's— WW, YW-top 10%
- * Recommended for cows.



Lot 28

REFERENCE SIRE 10 SONS SELL

Red Howe Head Games 169G

Reg # (Cdn) 2105011

Red U-2 Foreigner 413B
S: **Red U2 Head Games 330E**
Red U-2 MS Robo 383C

Red XO Crowfoot Shine 235Z
D: **Red Howe Birdie 52C**
Howe MS Birdie 91T

CAA CED B.W. W.W. Y.W. Milk
EPD +9.0 +0.3 +48 +89 +23

- * Head Games 169G was our choice at the 2020 Howe Red Angus Sale.
- * His sire Red U2 Head Games 330E has produced very good offspring for Howe & U2
- * Has great muscle shape, excellent calving ease & exceptional feet.
- * Very good EPDs CED-top 9%, BW-top 15%, YW-top 8%, WW-top 20%
- * He has developed into a very impressive 5 yr old bull that will play a prominent role in our herd.
- * His progeny have been very impressive. Stamps his calves like all great sires do.



Lot 29 **RED HAMCO HEAD GAMES 316L**

DSH 316L 2337698 March 9, 2023

RED U-2 HEAD GAMES 330E
RED HOWE HEAD GAMES 169G
RED HOWE BIRDIE 52C

RED H2R PROFITBUILDER B403
RED HAMCO SALLEE 98H
RED HAMCO PACKER 86F

RED U-2 FOREIGNER 413B
RED U-2 MS ROBO 383C
RED XO CROWFOOT SHINE 235Z
HOWE MS BIRDIE 91T
RED LSF TAKEOVER 9943W
RED BROWN MS P707 Y6674
RED HAMCO PACKER 133Y
RED HAMCO SALLEE 397D

	CED	BW	WW	YW	MILK	FR	BW	WW	YW
EPD	+2.0	+2.7	+66	+113	+28	6.5	96	796	1394
ADG	3.95-147		WDA 3.70-118		CE *	WT 1220		SCR 37 cm	

- * WOW!! Head Games 316L is an impressive, top end bull, larger framed, dark red, wide muscular rump with good length.
- * His Dam Sallee 98H is a bigger, well bred Profitbuilder cow out of a Packer 133Y cow.
- * This bull was the heaviest Red Bull at weaning—796 lbs (no creep)
- * Outstanding performance EPDs WW, YW-top 1%. ADJ YW— 1394 lbs!
- * Very good performance on test. ADG 3.95-147 WDA 3.70-118
- * Recommended for cows. He will calve fine when used on cows.



Lot 29

Lot 30 **RED HAMCO HEAD GAMES 255L**

DSH 255L 2350818 March 5, 2023

RED U-2 HEAD GAMES 330E
RED HOWE HEAD GAMES 169G
RED HOWE BIRDIE 52C

RED HAMCO PACKMAN 41B
RED HAMCO STRIKER 372H
RED HAMCO STRIKER 45C

RED U-2 FOREIGNER 413B
RED U-2 MS ROBO 383C
RED XO CROWFOOT SHINE 235Z
HOWE MS BIRDIE 91T
RED HAMCO PACKER 133Y
RED EUCLA 28Z
RED NCJ MOONSHINE 21Z
RED HAMCO STRIKER 83A

	CED	BW	WW	YW	MILK	FR	BW	WW	YW
EPD	+5.0	+1.1	+44	+76	+25	5.2	83	590	1108
ADG	3.36-125		WDA 2.86-91		CE ***	WT 955		SCR 32 cm	

- * Head Games 255L is a dark red, typical Head Games bull with a desirable muscle pattern & a nice Angus head.
- * Dam Striker 372H is a good young Packman cow that produced a full brother to this bull to Spruceholm Ranch. Good performance on test ADG 3.36-125
- * Good EPDs CED— top 35%, BW, WW, YW— top 45% or better
- * Recommended for heifers.



Lot 30

Lot 31**RED HAMCO HEAD GAMES 319L**

DSH 319L 2337699 March 9, 2023

RED U-2 HEAD GAMES 330E
RED HOWE HEAD GAMES 169G
 RED HOWE BIRDIE 52C

RED HAMCO PACKMAN 41B
RED HAMCO REBA 391H
 RED HAMCO REBA 118Y

RED U-2 FOREIGNER 413B
 RED U-2 MS ROBO 383C
 RED XO CROWFOOT SHINE 235Z
 HOWE MS BIRDIE 91T
 RED HAMCO PACKER 133Y
 RED HAMCO EUCLA 28Z
 RED BRYLOR SDL PASQUALE 213P
 RED HAMCO REBA 157W

	CED	BW	WW	YW	MILK	FR	BW	WW	YW
EPD	+7.0	+0.6	+47	+77	+27	5.2	83	697	1237
ADG 3.46-129	WDA 3.26-104		CE ***	WT 1075		SCR 34 cm			

- * Head Games 319L is a dark red, typical Head Games son—deep middled, wide bull with lots of muscle, good hair & a desirable Angus head.
- * Dam Reba 391H is a well bred proven cow that produced a full brother to this bull to Red Diamond Farm in last years sale.
- * Good EPDs—all top 40% or better
- * Very good performance on test. ADG 3.46-129 WDA 3.26-104
- * Recommended for heifers.

**Lot 31****Lot 32****RED HAMCO HEAD GAMES 302L**

DSH 302L 2337687 March 8, 2023

RED U-2 HEAD GAMES 330E
RED HOWE HEAD GAMES 169G
 RED HOWE BIRDIE 52C

RED TOWAW KINGMAN 167B
RED HAMCO TRINA 182H
 RED HAMCO TRINA 102E

RED U-2 FOREIGNER 413B
 RED U-2 MS ROBO 383C
 RED XO CROWFOOT SHINE 235Z
 HOWE MS BIRDIE 91T
 RED TOWAW KINGMAN 157Z
 RED TOWAW SYBIL 127Z
 RED BRYLOR RED KODIAK 3A
 RED MJ TRINA 6N

	CED	BW	WW	YW	MILK	FR	BW	WW	YW
EPD	+4.0	+1.9	+51	+93	+31	5.5	85	728	1240
ADG 3.08-115	WDA 3.29-105		CE **	WT 1090		SCR 35 cm			

- * Head Games 302L is a very good, dark red, very deep, nice headed, showy bull that is built like a tank.
- * Dam Trina 182H is a good Kingman cow out of a good ET Kodiak 3E cow.
- * Good performance EPDs WW, YW, Milk-top 20% or better.
- * Good performance on test. ADG 3.08-115 WDA 3.29-105
- * Recommended for cows or well grown out heifers.

**Lot 32****Lot 34****RED HAMCO HEAD GAMES 267L**

DSH 267L 2336247 March 6, 2023

RED U-2 HEAD GAMES 330E
RED HOWE HEAD GAMES 169G
 RED HOWE BIRDIE 52C

RED HAMCO PACKER 133Y
RED HAMCO ERIKA 239H
 RED HAMCO ERIKA 26A

RED U-2 FOREIGNER 413B
 RED U-2 MS ROBO 383C
 RED XO CROWFOOT SHINE 235Z
 HOWE MS BIRDIE 91T
 RED MESSMER PACKER S008
 RED HAMCO MIMI 520W
 RED LAZY MC HONKY TONK 11X
 RED HAMCO ERIKA 181Y

	CED	BW	WW	YW	MILK	FR	BW	WW	YW
EPD	+5.0	+1.5	+47	+82	+25	5.0	82	610	1080
ADG 2.95-110	WDA 2.82-90		CE ***	WT 940		SCR 34 cm			

- * Head Games 267L is a dark red, deep middled bull with a wide muscular rump & a nice Angus head.
- * Erika 239H is a very good Packer 133Y daughter that has a daughter retained.
- * Balanced EPDs CED-top 35% Good performance on test ADG 2.95-110
- * Recommended for heifers.

**Lot 34**

Lot 35**RED HAMCO HEAD GAMES 268L**

DSH 268L 2336248 March 6, 2023

RED U-2 HEAD GAMES 330E
RED HOWE HEAD GAMES 169G
 RED HOWE BIRDIE 52C

RED ANDRAS NEW DIRECTION R240
RED HAMCO MIMI 120H
 RED HAMCO MIMI 124B

RED U-2 FOREIGNER 413B
 RED U-2 MS ROBO 383C
 RED XO CROWFOOT SHINE 235Z
 HOWE MS BIRDIE 91T
 ANDRAS IN FOCUS B152
 ANDRAS KURUBA B111
 RED BRYLOR WEST JET 69W
 RED HAMCO MIMI 76S

	CED	BW	WW	YW	MILK	FR	BW	WW	YW
EPD	+6.0	+0.4	+46	+83	+22	5.2	76	621	1129
ADG 3.21-120	WDA 2.94-94		CE ***	WT 980		SCR 31.5cm			

- * Head Games 268L is a dark red, correct made bull that is stamped like all the Head Games bulls—good hair, nice Angus head, well muscled bull.
- * Dam Mimi 120H is a well bred New Direction, out of a West Jet donor cow & has a daughter retained.
- * Good EPDs CED, BW, WW, YW-top 35% or better
- * Good performance on test. ADG 3.21-120
- * Recommended for heifers.

Lot 36**RED HAMCO HEAD GAMES 321L**

DSH 321L 2338208 March 10, 2023

RED U-2 HEAD GAMES 330E
RED HOWE HEAD GAMES 169G
 RED HOWE BIRDIE 52C

RED NCJ MOONSHINE 21Z
RED HAMCO REBA 165H
 RED HAMCO REBA 257D

RED U-2 FOREIGNER 413B
 RED U-2 MS ROBO 383C
 RED XO CROWFOOT SHINE 235Z
 HOWE MS BIRDIE 91T
 RED CROWFOOT MOONSHINE 8081U
 RED LAZY MC MISS 1U
 RED CCC TOWAW EXCEL 34Z
 RED HAMCO REBA 484A

	CED	BW	WW	YW	MILK	FR	BW	WW	YW
EPD	+7.0	+0.2	+48	+78	+24	5.2	78	686	1093
ADG 2.58-96	WDA 2.94-94		CE ***	WT 966		SCR 38 cm			

- * These Head Games bulls are consistently good bulls with muscular, wide rumps, good hair & extra length
- * Dam Reba 165H is a Moonshine daughter that did a good job raising this calf WW 686 lbs-105
- * Good EPDs CED, BW, WW, YW-all top 40%
- * Recommended for heifers.

Lot 38**RED HAMCO HEAD GAMES 224L**

DSH 224L 2335990 March 2, 2023

RED U-2 HEAD GAMES 330E
RED HOWE HEAD GAMES 169G
 RED HOWE BIRDIE 52C

RED SSS AMSCRAE 582C
RED HAMCO SIENA 311H
 RED HAMCO SIENA 318B

RED U-2 FOREIGNER 413B
 RED U-2 MS ROBO 383C
 RED XO CROWFOOT SHINE 235Z
 HOWE MS BIRDIE 91T
 RED SSS AMBUSH 771X
 RED SSS 610X
 RED HAMCO FRANCHISE 122R
 RED HAMCO SIENAS PRINCESS 125N

	CED	BW	WW	YW	MILK	FR	BW	WW	YW
EPD	+9.0	-0.7	+37	+68	+24	5.2	80	594	1165
ADG 3.59-134	WDA 2.98-95		CE ***	WT 1005		SCR 33 cm			

- * Head Games 224L is a lighter red, wide bodied, correct made bull with good depth & muscle.
- * Dam is another good Amscrae daughter that has a full sister to this bull retained.
- * Good calving ease EPDs CED, BW-top 15%
- * Good performance on test. ADG 3.59-134 WDA 2.89-95
- * Recommended for heifers.

**Lot 35****Lot 37****RED HAMCO HEAD GAMES 364L**

DSH 364L 2338254 March 13, 2023

RED U-2 HEAD GAMES 330E
RED HOWE HEAD GAMES 169G
 RED HOWE BIRDIE 52C

RED HAMCO PACKER 133Y
RED HAMCO MIMI 179H
 RED HAMCO MIMI 181A

RED U-2 FOREIGNER 413B
 RED U-2 MS ROBO 383C
 RED XO CROWFOOT SHINE 235Z
 HOWE MS BIRDIE 91T
 RED MESSMER PACKER S008
 RED HAMCO MIMI 520W
 RED GLACIER LOGAN
 RED HAMCO MIMI 77S

	CED	BW	WW	YW	MILK	FR	BW	WW	YW
EPD	+4.0	+1.6	+48	+79	+26	5.0	88	675	1108
ADG 2.42-90	WDA 2.96-94		CE **	WT 964		SCR 33 cm			

- * Head Games 364L is a deep ribbed, well muscled bull with lots of hair, typical Head Games bull.
- * Dam Mimi is out of our great cow maker bull Packer 133Y out of a good Logan cow that has a full sister retained in the herd.
- * Balanced EPDs- all top 55% or better. Great maternal genetics.
- * Recommended for cows or well grown out heifers.

**Lot 38**

REFERENCE SIRE 9 SONS SELL

Red Hamco Nexus 74G

Reg # (Cdn) 2123282

Red LJC Mission Statement P27 Stevenson Rainmaker 630G
S: Red Silveiras Mission Nexus D: Red Cudlobe Bonnie 181X
Red Silveiras Daorv 8399 Cudlobe Bonnie 19L

CAA CED B.W. W.W. Y.W. Milk
EPD +1.0 +3.3 +55 +102 +31

* Nexus 74G is the result of an embryo we purchased at the Canadian Angus Legacy Sale in 2017. He has outcross genetics for our herd & very good carcass genetics.

* As you can see from his picture he has developed into a very impressive herd bull that stands out in the bull pen.

* Nexus 74G is a very complete bull—correct made, deep ribbed, very well muscled with impressive width and length.

* Has produced some very good sons & daughters for our herd.



Lot 39

RED HAMCO NEXUS 150L

DSH 150L 2330677 February 22, 2023

RED SILVEIRAS MISSION NEXUS
RED HAMCO NEXUS 74G
RED CUDLOBE BONNIE 181X

TOWAW KINGMAN 467B
RED HAMCO CROCUS 172G
RED HAMCO CROCUS 112D

RED LJC MISSION STATEMENT P27
RED SILVEIRAS DAORV 8399
STEVENSON RAINMAKER 630G
CUDLOBE BONNIE 19L
RED TOWAW KINGMAN 127Z
RED TOWAW SYBIL 127Z
RED T-K SAGA 81B
RED HAMCO CROCUS 124A

	CED	BW	WW	YW	MILK	FR	BW	WW	YW
EPD	+4.0	+1.3	+51	+90	+35	6.0	84	711	1353
ADG	3.82-142		WDA 3.57-114	CE *		WT 1230		SCR 36 cm	

* WOW! Nexus 150L is a top end, dark red, straight topped, bigger, powerful bull with extra depth & a nice Angus head.

* Dam Crocus 172G is a proven cow that did a good job raising this bull. WW 711 lbs—108 & has produced a son to David Dyck.

* Very good performance on test ADG 3.82-142 WDA 3.57-114

* Good performance EPDs WW, YW, Milk—top 20% or better.

* Recommended for cows.

Lot 40

RED HAMCO NEXUS 239L

DSH 239L 2336230 March 4, 2023

RED SILVEIRAS MISSION NEXUS
RED HAMCO NEXUS 74G
RED CUDLOBE BONNIE 181X

RED ANDRAS NEW DIRECTION R240
RED HAMCO SUSIE 41E
RED HAMCO SUSIE 6C

RED LJC MISSION STATEMENT P27
RED SILVEIRAS DAORV 8399
STEVENSON RAINMAKER 630G
CUDLOBE BONNIE 19L
ANDRAS IN FOCUS B152
ANDRAS KURUBA B111
RED BRYLOR RED KODIAK 3A
RED HAMCO SUSIE 213A

	CED	BW	WW	YW	MILK	FR	BW	WW	YW
EPD	+2.0	+2.4	+48	+90	+25	5.2	89	598	1099
ADG	2.93-109		WDA 2.97-95	CE *		WT 995		SCR 34 cm	

* Nexus 239L is a dark red, deep ribbed bull with desirable width & muscle & a nice Angus head.

* Dam Susie is a well bred New Direction daughter out of a Kodiak 3A cow. She has produced a bull to Vincent Boisvert & a daughter retained.

* Balanced EPDs. Good performance on test ADG 2.93-109

* Recommended for cows.



Lot 41**RED HAMCO NEXUS 236L**

DSH 236L 2336228 March 3, 2023

RED SILVEIRAS MISSION NEXUS

RED HAMCO NEXUS 74G

RED CUDLOBE BONNIE 181X

RED COCKBURN ASSASSIN 624D

RED HAMCO MIMI 14G

RED HAMCO MIMI 332E

RED LJC MISSION STATEMENT P27

RED SILVEIRAS DAORV 8399

STEVENSON RAINMAKER 630G

CUDLOBE BONNIE 19L

RED PIE SPECIALIST 430

RED COCKBURN CORA 254Z

RED HAMCO DOMINOR 79X

RED HAMCO MIMI 272A

	CED	BW	WW	YW	MILK	FR	BW	WW	YW
EPD	+2.0	+2.3	+48	+85	+32	5.1	85	669	1118
ADG	2.79-104		WDA 3.04-97		CE *	WT 1020		SCR 36.5cm	

* Nexus 236L is a medium red, deep middled, wide bodied bull that is built like a tank with a nice Angus head.

* Dam is a daughter of the high selling Assassin 624D bull that has a daughter retained.

* Good performance on test. Balanced EPDs.

* Recommended for cows.

**Lot 42****RED HAMCO NEXUS 354L**

DSH 354L 2338237 March 12, 2023

RED SILVEIRAS MISSION NEXUS

RED HAMCO NEXUS 74G

RED CUDLOBE BONNIE 181X

RED H2R PROFITBUILDER B403

RED HAMCO ERIKA 94F

RED HAMCO ERIKA 293D

RED LJC MISSION STATEMENT P27

RED SILVEIRAS DAORV 8399

STEVENSON RAINMAKER 630G

CUDLOBE BONNIE 19L

RED LSF TAKEOVER 9943W

RED BROWN MS P707 Y6674

RED WILDMAN XEMPT 422B

RED HAMCO ERIKA 26A

	CED	BW	WW	YW	MILK	FR	BW	WW	YW
EPD	+6.0	+0.7	+51	+96	+25	5.8	79	652	1130
ADG	2.83-105		WDA 3.10-99		CE **	WT 1015		SCR 34.5cm	

* Nexus 354L is a dark red, deep sided, larger framed, powerful bull with a desirable Angus head.

* Dam Erika 94F is a proven cow with sons to Ron Allan, Chris Harrison & a daughter retained.

* Good EPDs CED, BW, WW, YW-all top 35% or better.

* Good performance on test.

* Recommended for cows or well grown out heifers.

**Lot 43****RED HAMCO NEXUS 129L**

DSH 129L 2330637 February 19, 2023

RED SILVEIRAS MISSION NEXUS

RED HAMCO NEXUS 74G

RED CUDLOBE BONNIE 181X

RED FRASER PACKER 723E

RED HAMCO CROCUS 422G

RED HAMCO CROCUS 16C

RED LJC MISSION STATEMENT P27

RED SILVEIRAS DAORV 8399

STEVENSON RAINMAKER 630G

CUDLOBE BONNIE 19L

RED WILBAR PACKER 383B

RED FRASER POTEET 529R

RED BRYLOR RED KODIAK 3A

RED HAMCO CROCUS 147A

	CED	BW	WW	YW	MILK	FR	BW	WW	YW
EPD	+5.0	+0.7	+42	+80	+25	5.2	75	565	1083
ADG	3.33-124		WDA 2.83-90		CE **	WT 985		SCR 34 cm	

* Nexus 129L is a darker red, deep middled, well muscled bull with a desirable Angus head.

* Dam Crocus 422G is a proven Packer 723E daughter with a bull to David Dyck & a daughter retained.

* Balanced EPDs- all top 50% or better.

* Very good performance on test ADG 3.33-124

* Recommended for cows or well grown out heifers.



Lot 44**RED HAMCO NEXUS 366L**

DSH 366L 2338256 March 13, 2023

RED SILVEIRAS MISSION NEXUS
RED HAMCO NEXUS 74G
 RED CUDLOBE BONNIE 181X

RED TOWAW KINGMAN 467B
RED HAMCO ERIKA 375G
 RED HAMCO ERIKA 293D

RED LJC MISSION STATEMENT P27
 RED SILVEIRAS DAORV 8399
 STEVENSON RAINMAKER 630G
 CUDLOBE BONNIE 19L
 RED TOWAW KINGMAN 157Z
 RED TOWAW SYBIL 127Z
 RED WILDMAN XEMPT 422B
 RED HAMCO ERIKA 26A

	CED	BW	WW	YW	MILK	FR	BW	WW	YW
EPD	-4.0	+4.5	+54	+98	+34	5.5	100	766	1254
ADG	2.89-108		WDA 3.44-110		CE *	WT 1120		SCR 33 cm	

* Nexus 366L is a dark red, very deep middled bull with a wide muscular rump.
 * Dam Erika 375G is a very good Kingman daughter with a son to Conrad Wall & a daughter retained.
 * WW 766 lbs- 115
 * Good performance on test.
 * Very good performance EPDs WW, YW, Milk- top 10% or better.
 * Recommended for cows. He will calve fine when used on cows.

**Lot 44****Lot 45****RED HAMCO NEXUS 309L**

DSH 309L 2337692 March 8, 2023

RED SILVEIRAS MISSION NEXUS
RED HAMCO NEXUS 74G
 RED CUDLOBE BONNIE 181X

RED HAMCO DOMINOR 79X
RED HAMCO REBA 360F
 RED HAMCO REBA 157W

RED LJC MISSION STATEMENT P27
 RED SILVEIRAS DAORV 8399
 STEVENSON RAINMAKER 630G
 CUDLOBE BONNIE 19L
 RED VII DOMINOR 2N
 RED LEADHAM CARMELLA 22H(ELITE)
 RED BRYLOR NEW TREND 22D
 RED HAMCO REBA 194M(ELITE)

	CED	BW	WW	YW	MILK	FR	BW	WW	YW
EPD	+7.0	+0.7	+41	+73	+28	5.5	78	652	1072
ADG	2.83-105		WDA 2.98-95		CE **	WT 985		SCR 34.5cm	

* Nexus 309L is a medium red, correct made, good haired bull with desirable depth & width.
 * Dam Reba produced a very good bull to Doug Wilson.
 * Balanced EPDs- all top 50% or better.
 * Recommended for cows or well grown out heifers.

Lot 46**RED HAMCO NEXUS 306L**

DSH 306L 2337690 March 8, 2023

RED SILVEIRAS MISSION NEXUS
RED HAMCO NEXUS 74G
 RED CUDLOBE BONNIE 181X

RED COCKBURN ASSASSIN 624D
RED HAMCO CROCUS 31G
 RED HAMCO CROCUS 387E

RED LJC MISSION STATEMENT P27
 RED SILVEIRAS DAORV 8399
 STEVENSON RAINMAKER 630G
 CUDLOBE BONNIE 19L
 RED PIE SPECIALIST 430
 RED COCKBURN CORA 254Z
 RED TOWAW CALIDAD 551B
 RED HAMCO CROCUS 14C

	CED	BW	WW	YW	MILK	FR	BW	WW	YW
EPD	-1.0	+3.4	+61	+109	+31	6.0	95	771	1257
ADG	2.70-100		WDA 3.44-110		CE *	WT 1140		SCR 35 cm	

* Nexus 306L is a dark red, powerful bull with extra width & muscle & a wide rump.
 * Dam Crocus 31G is an Assassin daughter that has produced a son to Ken Petrick.
 * Very good performance EPDs WW, YW, Milk- top 4% or better.
 * Recommended for cows.

**Lot 46****Lot 47****RED HAMCO NEXUS 311L**

DSH 311L 2337694 March 9, 2023

RED SILVEIRAS MISSION NEXUS
RED HAMCO NEXUS 74G
 RED CUDLOBE BONNIE 181X

RED TOWAW MALBEC 454C
RED HAMCO ESIA 107F
 RED HAMCO ESIA 348Y

RED LJC MISSION STATEMENT P27
 RED SILVEIRAS DAORV 8399
 STEVENSON RAINMAKER 630G
 CUDLOBE BONNIE 19L
 RED TOWAW MALBEC 14Z
 RED TOWAW LAKOTA 31Y
 RED SSS ZAMA PINE 90U
 RED HAMCO ESIA 13U

	CED	BW	WW	YW	MILK	FR	BW	WW	YW
EPD	0.0	+3.3	+53	+95	+30	6.0	86	735	1212
ADG	2.47-92		WDA 3.36-107		CE *	WT 1110		SCR 33 cm	

* Dam 311L is a medium red, bigger, deep made power full that has developed into an impressive bull.
 * Dam Esia 107F is a well bred cow that did a good job raising this calf WW 735lbs-112
 * She has produced a bull to Walter Olsen.
 * Very good performance EPDs WW, YW, Milk-top 15% or better.
 * Recommended for cows.

**Lot 47**

REFERENCE 5 SONS SELL

Red SSS Mogul 309J

Reg # (Cdn) 2230173

Red SSS Tycoon 225E Peak Dot Earnhardt 164E
S: Red SSS Mogul 771G D: SSS Star 848G
Red SSS Duchess 150E Red SSS Star 810D

CAA	CED	B.W.	W.W.	Y.W.	Milk
EPD	+1.0	+2.8	+62	+112	+24

- * Mogul 309J was our pick of the 2022 Triple S Bull Sale. A SSS Tycoon 225E son.
- * An outcross pedigree that will add some great genetics to our herd.
- * The first calf crop has been impressive as you will see.
- * Very good performance EPD's—WW, YW-top 3%



Lot 48

RED HAMCO MOGUL 345L

DSH 345L 2338229 March 12, 2023

RED SSS MOGUL 771G RED SSS TYCOON 225E
RED SSS MOGUL 309J RED SSS DUCHESS 150E
SSS STAR 848G PEAK DOT EARNHARDT 164E
RED SSS AMSCRAE 582C RED SSS STAR 810D
RED HAMCO DIXIE CHIC 284H RED SSS AMBUSH 771X
RED HAMCO DIXIE CHIC 336C RED SSS 610X
RED SSS ZAMA PINE 90U
RED HAMCO DIXIE CHIC 11N

	CED	BW	WW	YW	MILK	FR	BW	WW	YW
EPD	-1.0	+3.2	+54	+94	+24	5.0	88	682	1137
ADG	2.74-102		WDA 3.03-97		CE *	WT 990		SCR 35 cm	

- * Mogul 345L is a dark red, very good, showy bull with impressive width, muscle, power & lots of hair.
- * Dam Dixie Chic 284H is a promising your Amscrae daughter that did a good job on this calf WW 682 lbs- 103
- * Very good performance EPDs WW, YW-top 10%
- * Recommended for cows to add weight to your calves at weaning.

Lot 49

RED HAMCO MOGUL 320L

DSH 320L 2337700 March 9, 2023

RED SSS MOGUL 771G RED SSS TYCOON 225E
RED SSS MOGUL 309J RED SSS DUCHESS 150E
SSS STAR 848G PEAK DOT EARNHARDT 164E
RED HAMCO PACKMAN 41B RED SSS STAR 810D
RED HAMCO ANGEL 367H RED HAMCO PACKER 133Y
RED HAMCO ANGEL 94C RED HAMCO EUCLA 28Z
RED LAZY MC HONKY TONK 11X
RED HAMCO ANGEL 50T

	CED	BW	WW	YW	MILK	FR	BW	WW	YW
EPD	+4.0	+1.0	+64	+108	+27	5.7	78	759	1284
ADG	2.82-105		WDA 3.42-109		CE **	WT 1130		SCR 35 cm	

- * Mogul 320L is a very dark red, top end bull with very good muscle, depth, width, thickness & good hair.
- * Dam Angel 367H is a very good Packman daughter that did a great job on this calf WW 759 lbs-117. 2nd highest weaning weight on Red Angus Bulls
- * We missed picturing this bull as we misread a dirty ear tag. He is very good . Evaluate him on video or better yet in real life.
- * Very good performance on test. ADG 2.82-105 WDA 3.42-109
- * Recommended for cows or well grown out heifers.



Lot 48

Lot 50 **RED HAMCO MOGUL 376L**
DSH 376L 2338264 March 15, 2023

RED SSS MOGUL 771G
RED SSS MOGUL 309J
SSS STAR 848G

RED SSS AMSCRAE 582C
RED HAMCO STAR 447H
RED HAMCO STAR 237D

RED SSS TYCOON 225E
RED SSS DUCHESS 150E
PEAK DOT EARNHARDT 164E
RED SSS STAR 810D
RED SSS AMBUSH 771X
RED SSS 610X
RED LAZY MC SPYDER 149A
RED HAMCO STAR 508Y

	CED	BW	WW	YW	MILK	FR	BW	WW	YW
EPD	+4.0	+1.4	+52	+92	+29	5.3	77	717	1238
ADG	3.38-126		WDA 3.29-105		CE **	WT 1065		SCR 38.5cm	

- * Mogul 376L is a dark red, very good, thick made, wide bodied bull that is built like a tank with an ideal Angus head.
- * Dam Star 447H is a very good young Amscrae daughter that did a great job on this bull WW 717 lbs -110 & has a daughter retained.
- * Good performance on test ADG 3.38-126 WDA 3.29-105
- * Good performance EPDs WW, YW, Milk-top 20% or better
- * Recommended for cows or well grown out heifers.



Lot 50

Lot 51 **RED HAMCO MOGUL 305L**
DSH 305L 2337689 March 8, 2023

RED SSS MOGUL 771G
RED SSS MOGUL 309J
SSS STAR 848G

RED TOWAW JULIAN 452D
RED HAMCO GOLD EDGE 235H
RED HAMCO GOLD EDGE 336A

RED SSS TYCOON 225E
RED SSS DUCHESS 150E
PEAK DOT EARNHARDT 164E
RED SSS STAR 810D
RED FLYING K JULIAN 72Y
RED TOWAW ANNETTE 511A
RED SSS ZAMA PINE 90U
RED GOLD EDGE OF KINARED 13X

	CED	BW	WW	YW	MILK	FR	BW	WW	YW
EPD	+7.0	0.2	+46	+94	+26	5.0	70	629	1098
ADG	2.45-91		WDA 2.89-92		CE ***	WT 956		SCR 36.5cm	

- * Mogul is a very dark red, very good bull with extra depth & width.
- * Dam Gold Edge 235H is a good, young cow out of our valued Gold Edge family.
- * Good EPDs CED, BW, WW, YW-all top 35% or better
- * Recommended for heifers .



Lot 51

Lot 52 **RED HAMCO MOGUL 310L**
DSH 310L 2337693 March 9, 2023

RED SSS MOGUL 771G
RED SSS MOGUL 309J
SSS STAR 848G

RED WILDMAN XEMPT 422B
RED HAMCO SUSIE 407H
RED HAMCO SUSIE 97D

RED SSS TYCOON 225E
RED SSS DUCHESS 150E
PEAK DOT EARNHARDT 164E
RED SSS STAR 810D
RED JENSEN SKY 611X
RED IVOMA BARON BEAUTY 10P
RED ANDRAS NEW DIRECTION R240
RED HAMCO SUSIE 3Z

	CED	BW	WW	YW	MILK	FR	BW	WW	YW
EPD	-1.0	+2.8	+54	+96	+25	5.7	89	697	1132
ADG	2.58-96		WDA 3.03-97		CE *	WT 1000		SCR 35 cm	

- * Mogul 310L is a dark red, very thick made bull with extra muscle & good hair.
- * Dam Susie 407H is a good Xempt daughter that did a good job raising this bull WW 697 lbs- 105
- * Very good performance EPDs WW, YW-top 10%
- * Recommended for cows



REFERENCE SIRE 5 SONS SELL

Red SVR Zip 181G

Reg # (Cdn) 2120636

Red U-2 Mama's Boy 201B
S: Red SVR Attack 200D
Red SVR Fancy Lady 83W

Red T-K Bailout 1Z
D: Red SVR Colleen 103C
Red SVR Colleen 30U

CAA	CED	B.W.	W.W.	Y.W.	Milk
EPD	+3.0	+4.0	+48	+73	+24

- * Was our pick from the 2021 South View Bull Sale.
- * Has developed into a very impressive herd bull—very correct made with width, muscle & good feet & legs.
- * An outcross bull to our program & we really like his progeny in our herd.



Lot 53

RED HAMCO ZIP 292L

DSH 292L 2337678 March 7, 2023

RED SVR ATTACK 200D
RED SVR ZIP 181G
RED SVR COLLEEN 103C

RED FRASER PACKER 723E
RED HAMCO REBA 322J
RED HAMCO REBA 257D

RED U-2 MAMA'S BOY 201B
RED SVR FANCY LADY 83W
RED T-K BAILOUT 1Z
RED SVR COLLEEN 30U
RED WILBAR PACKER 383B
RED FRASER POTEET 529R
RED CCC TOWAW EXCEL 34Z
RED HAMCO REBA 484A

	CED	BW	WW	YW	MILK	FR	BW	WW	YW
EPD	-1.0	+2.9	+50	+75	+25	5.0	85	717	1169
ADG	3.08-115		WDA 3.01-96		CE *	WT 1000		SCR 36.5cm	

- * Zip 292L is a medium red, powerful bull with a wide muscular rump & good hair.
- * Dam Reba 322J is a good Packer 723E daughter & did a good job on this bull calf WW 717 lbs-105
- * Good performance on test ADG 3.08-115
- * Good performance EPDs WW, YW, Milk-top 50% or better
- * Recommended for cows.



Lot 53

Lot 54

RED HAMCO ZIP 194L

DSH 194L 2335961 February 27, 2023

RED SVR ATTACK 200D
RED SVR ZIP 181G
RED SVR COLLEEN 103C

RED FRASER PACKER 723E
RED HAMCO SHAWNEE 371J
RED HAMCO SHAWNEE 330C

RED U-2 MAMA'S BOY 201B
RED SVR FANCY LADY 83W
RED T-K BAILOUT 1Z
RED SVR COLLEEN 30U
RED WILBAR PACKER 383B
RED FRASER POTEET 529R
RED T-K FEDERAL 13Y
RED HAMCO SHAWNEE 19X

	CED	BW	WW	YW	MILK	FR	BW	WW	YW
EPD	-5.0	+4.3	+46	+75	+24	5.1	92	661	1120
ADG	2.70-100		WDA 2.84-90		CE *	WT 965		SCR 36.5cm	

- * Zip 194L is a medium red, deep middled, well muscled bull with a wide muscular rump. Looks just like his sire
- * Dam Shawnee 317J is a promising young Packer 723E daughter that did a good job raising her first calf.
- * Good performance EPDs . WW, YW- top 45% or better
- * Recommended for cows.



Lot 54

Lot 55

RED HAMCO ZIP 331L

DSH 331L 2338217 March 10, 2023

RED SVR ATTACK 200D
RED SVR ZIP 181G
RED SVR COLLEEN 103C

RED TOWAW JULIAN 545F
RED HAMCO MIMI 347J
RED HAMCO MIMI 85F

RED U-2 MAMA'S BOY 201B
RED SVR FANCY LADY 83W
RED T-K BAILOUT 1Z
RED SVR COLLEEN 30U
RED FLYING K JULIAN 72Y
RED TOWAW MINIATA 110Y
RED HAMCO PACKER 133Y
RED HAMCO MIMI 298D

	CED	BW	WW	YW	MILK	FR	BW	WW	YW
EPD	-1.0	+3.8	+49	+77	+26	5.0	82	659	1102
ADG	2.83-105		WDA 2.81-90		CE *	WT 925		SCR 33 cm	

- * Zip 331L is a dark red, correct made, well muscled bull with extra width & a nice Angus head.
- * Dam Mimi 347J is a daughter out of our highly valued Julian bull & out of our cow maker bull—Packer 133Y.
- * Good performance EPDs WW-top 25%, YW-top 40%
- * Recommended for cows.

Lot 56**RED HAMCO ZIP 157L**

DSH 157L 2330683 February 22, 2023

RED SVR ATTACK 200D
RED SVR ZIP 181G
 RED SVR COLLEEN 103C

RED JAS GRAND 15G
RED HAMCO ELISA 349J
 RED HAMCO ELISA 263F

RED U-2 MAMA'S BOY 201B
 RED SVR FANCY LADY 83W
 RED T-K BAILOUT 1Z
 RED SVR COLLEEN 30U
 RED COCKBURN ASSASSIN 624D
 RED JAS JESSICA 180E
 RED TOWAW ZEPPELIN 578B
 RED HAMCO ELISA 118D

	CED	BW	WW	YW	MILK	FR	BW	WW	YW
EPD	+1.0	+2.3	+49	+74	+26	5.3	82	680	1182
ADG	2.68-100		WDA 2.99-95		CE *	WT 1030		SCR 35 cm	

- * Zip 157L is a medium red, correct made, long bodied bull with good muscle shape.
- * Dam Elisa 349J is a good daughter our of our Grand bull.
- * Balanced EPDs WW-top 25%, YW-top 45%
- * Recommended for cows.

**Lot 56****Lot 57****RED HAMCO ZIP 286L**

DSH 286L 2337669 March 7, 2023

RED SVR ATTACK 200D
RED SVR ZIP 181G
 RED SVR COLLEEN 103C

RED BIEBER DEEP END B597
RED HAMCO BAYBERRY 168J
 RED HAMCO BAYBERRY 61A

RED U-2 MAMA'S BOY 201B
 RED SVR FANCY LADY 83W
 RED T-K BAILOUT 1Z
 RED SVR COLLEEN 30U
 RED BIEBER ROLLIN DEEP Y118
 RED BIEBER LAURA 158W
 RED LAZY MC CC DETOUR 2W
 RED HAMCO BAYBERRY 314Y

	CED	BW	WW	YW	MILK	FR	BW	WW	YW
EPD	-8.0	+5.2	+56	+97	+25	5.0	90	674	1141
ADG	2.67-100		WDA 2.91-93		CE *	WT 965		SCR 35 cm	

- * Zip 286L is a dark red, moderate framed bull with extra muscle, wide muscular hindquarters & a nice Angus head.
- * Dam Bayberry 168J is a well bred Deep End out of a Detour cow that did a job raising this bull.
- * Very good performance EPDs WW, YW-top 9%
- * Recommended for cows.

**Lot 57****REFERENCE 1 SON SELLS****Red SVR Trademark 78H**

Reg # (Cdn) 2177122

Red Chopper K Ozzi 109T Red Chopper K Cut Above 28W
 S: Red JJI Signature 49B D: Red SVR Ruby 130Y
 Red Riverdale Countess 485M Red SVR Ruby 124U

CAA	CED	B.W.	W.W.	Y.W.	Milk
EPD	+6.0	+0.5	+39	+61	+18

- * Trademark 78H was our pick of the yearling bulls at the Southview Ranch 2021 Sale.
- * He is very correct made, with good thickness, width, muscle & very good feet.
- * He was used late in the season so will have 2 year old sons sell next year.

**Lot 58****RED HAMCO TRADEMARK 362L**

DSH 362L 2338251 March 13, 2023

RED JJI SIGNATURE 49B
RED SVR TRADEMARK 78H
 RED SVR RUBY 130Y

RED CCC TOWAW EXCEL 34Z
RED HAMCO CHIC 336G
 RED HAMCO CHIC 98C

RED CHOPPER K OZZI 109T
 RED RIVERDALE COUNTESS 485M
 RED CHOPPER K CUT ABOVE 28W
 RED SVR RUBY 124U
 RED GLEBAR EXCEL 73W
 RED TOWAW FAYETTE 9W
 RED HAMCO PACKER 133Y
 RED HAMCO CHIC 286P

	CED	BW	WW	YW	MILK	FR	BW	WW	YW
EPD	+8.0	-0.5	+47	+67	+25	5.5	80	726	1201
ADG	2.71-101		WDA 3.28-105		CE ***	WT 1070		SCR 34 cm	

- * Trademark 362L is a dark red, very good, soggy made bull with good depth & thickness & a desirable Angus head & good hair.
- * Dam 336G is a proven Excel daughter that did a good job on this bull WW 726 lbs- 111 Also has a daughter in the herd.
- * Good calving ease EPDs CED, BW-top 20% or better
- * Recommended for heifers

**Lot 58**

REFERENCE SIRE 2 SON SELLS

S Architect 9501

Reg # (Cdn) 2239199

KM Broken Bow 002 S Whitlock 179
S: Sydgen Blueprint D: S Blossom 7514
Sitz Florabelle Fanny 4735 S Blossom 5525

CAA CED B.W. W.W. Y.W. Milk
EPD +8.0 +0.4 +92 +155 +22

- * S Architect 9501 is a gem of a sire from the same herd as the great Chisum bull
- * Anchored by 4 Pathfinder cows in 6 generations on the maternal side of the pedigree
- * Architect is being used heavily in the Spickler program as well as some of the breeds most elite seedstock herds.
- * Use Architect to add growth & substance, along with the maternal prepotency from his great cow family
- * Sons are fast growing, stout, big bodied bulls. Daughters are deep middled, broody, feminine females.



Lot 101 **HAMCO ARCHITECT 10L**

DSH 10L 2322888 January 31, 2023 (AI)

SYDGEN BLUEPRINT KM BROKEN BOW 002
S ARCHITECT 9501 SITZ FLORABELLE FANNY 4735
S BLOSSOM 7514 S WHITLOCK 179
S BLOSSOM 5525
HAMCO RAPTOR 3F QUAKER HILL RAMPAGE 0A36
HAMCO COUNTESS 243J TOPP PEGGY 6055
HAMCO COUNTESS 316F TOPP CAPITALIST 5347
BLACK HAMCO COUNTESS 1Y

	CED	BW	WW	YW	MILK	FR	BW	WW	YW
EPD	+13	1.2	+69	+116	+22	5.0	65	637	1143
ADG	3.63-113		WDA 2.83-86		CE ***		WT 1040	SCR 34 cm	

- * Architect 10L is moderated framed, showy, deep middled bull with a wide muscular rump with a desirable Angus head.
- * Dam is a Raptor daughter & she should cross well with Architect.
- * Calving ease with great performance.
- * Good performance on test ADG 3.63-113
- * Outstanding EPDs CED, BW, WW, YW-top 10% or better
- * Highly recommended for heifers.



Lot 101

Lot 102 **HAMCO ARCHITECT 52L**

DSH 52L 2324950 February 5, 2023 AI

SYDGEN BLUEPRINT KM BROKEN BOW 002
S ARCHITECT 9501 SITZ FLORABELLE FANNY 4735
S BLOSSOM 7514 S WHITLOCK 179
S BLOSSOM 5525
TOPP DONALD 8061 SVA THE DONALD 4030
HAMCO ROSEBUD 247J TA FOREVER 3738
HAMCO ROSEBUD 45G ELLINGON HOMEGROWN 6035
HAMCO ROSEBUD 189E

	CED	BW	WW	YW	MILK	FR	BW	WW	YW
EPD	+12	-0.2	+82	+147	+26	5.0	71	761	1272
ADG	3.11-97		WDA 3.26-99		CE ***		WT 1180	SCR 35.5cm	

- * Architect 52L is a very good, correct made, showy, deep sided bull with a wide, muscular rump and a nice Angus head.
- * Dam Rosebud 247J is a good Donald cow that did a great job raising this bull. WW 761 lbs -118
- * Outstanding EPDs CED, BW, WW, YW-top 10% or better
- * Again calving ease with great performance.
- * Highly recommended for heifers



Lot 102



REFERENCE SIRE 1 SON SELLS

Schiefelbein Attractive 4565

IMP 4565C 1938699(CDN) March 20, 2015

Sitz Top Game 561X S A V Answer 0035
S: JMB Traction 292 D: Frosty Answer 3979
JMB Emulota 013 Frosty Elba Lizzy 1106

CAA	CED	B.W.	W.W.	Y.W.	Milk
EPD	+4.0	+2.7	+84	+153	+29

- * Very popular AI sire.
- * Performance oriented bull with added shape & dimension.
- * Excellent phenotype with good hip structure, an attractive, overall eye appealing bull.
- * Sires good feet & good temperament.
- * Top 10% or better WW, YW & Milk



Lot 103 HAMCO ATTRACTIVE 87L

DSH 87L 2330567 February 10, 2023 (AI)

JMB TRACTION 292 SITZ TOP GAME 561X
SCHIEFELBEIN ATTRACTIVE 4565 JMB EMULOTA 013
FROSTY ANSWER 3979 SAV FINAL ANSWER 0035
FROSTY ELBA LIZZY 1106
BROOKING JASPER 6124 BROOKING BANK NOTE 4040
HAMCO LASS 323J BRUSETT CLOVA PRIDE Y136
BLACK HAMCO LASS 159Y PEAK DOT PREDOMINANT 715S
BLACK HAMCO LASS 371U

	CED	BW	WW	YW	MILK	FR	BW	WW	YW
EPD	+4.0	+2.2	+73	+126	+29	5.6	77	727	1204
ADG	3.03-94		WDA 3.08-94		CE **	WT 1100		SCR 37.5cm	

- * Attractive 87L is a very correct made, showy bull with good depth, width & muscle shape & a nice Angus head.
- * Dam Lass 323J is a well bred cow—a Jasper out of a Predominant cow.
- * Very good performance EPDs WW, YW, Milk-top 10% or better
- * Recommended for cows or well grown out heifers.



Lot 103

REFERENCE SIRE 1 SON SELLS

S A V Renovation 6822

Reg # (Cdn) 1963240

Rito 707 Of Ideal 3407 7075 S A V 004 Density 4336
S: S A V Renown 3439 D: S A V Madame Pride 0151
S A V Blackcap May 4136 S A V Madame Pride 0075

CAA	CED	B.W.	W.W.	Y.W.	Milk
EPD	+3.0	+2.5	+66	+121	+17

- * He is an impressive individual with abundance of muscle, body shape, depth of rib in a modest frame size approach.
- * He has mass & performance with an attractive look & traditional Angus head.
- * Grandam is the famous SAV Madame Pride 0075—dam of the 1.51 million dollar SAV America 8018. Very popular AI sire. Very good maternal genetics



Lot 104 HAMCO RENOVATION 86L

DSH 86L 2330566 February 10, 2023 (AI)

S A V RENOWN 3439 RITO 707 OF IDEAL 3407 7075
S A V RENOVATION 6822 S A V BLACKCAP MAY 4136
S A V MADAME PRIDE 0151 S A V 004 DENSITY 4336
TOPP BIG SKY 7046 S A V MADAME PRIDE 0075
HAMCO COUNTESS 324J MUSGRAVE BIG SKY
HAMCO COUNTESS 29D TA MARCIA 0616
SCHIEFELBEIN EFFECTIVE 61
HAMCO COUNTESS 431B

	CED	BW	WW	YW	MILK	FR	BW	WW	YW
EPD	+11	-0.5	+56	+104	+22	5.1	67	650	1218
ADG	3.41-106		WDA 3.01-91		CE ***	WT 1075		SCR 32.5cm	

- * Renovation 86L is a very good, deep middle, wide bodied bull with a wide muscular rump & a nice Angus head.
- * Dam Countess 324J is a good young Big Sky 7046 daughter that did a good job raising her first calf
- * Very good EPDs CED, BW-top 8%, WW, YW-top 40%
- * Recommended for heifers.



Lot 104

REFERENCE SIRE 12 SONS SELL

Hamco Raptor 3F

DSH 3F 2046378(CDN) 19507221 (AAA) January 15, 2018

MCC Daybreak
S: Quaker Hill Rampage 0A36 D: Topp Peggy 6055
QHF Blackcap 6E2 TC Peggy 5092

CAA CED B.W. W.W. Y.W. Milk
EPD +10.0 +1.8 +87 +152 +19

- * Raptor is clearly the best bull we have ever raised at Hamco. He has stood out for his fertility, performance, length of body, bone & overall width with excellent docility.
- * Exceptional EPDs-WW, YW-top 1%, CED-top 10%, BW-top 45%,
- * His first calf crop mainly out of heifers were outstanding. His calving ease & tremendous performance after birth make him a very valuable breeding bull. He is easily competes with the best AI bulls available. Topp Angus have used him heavily in their program & they are very excited with his progeny. His sons sold very well in the last 2 Topp Angus sale & very well in our last 3 sales He is still breeding well at 6 years of age. He crosses extremely well on other breeds when used commercially. Explosive growth to weaning & yearling weight. He or his sons have a major impact on the bottom line of any herd he is used in.
- * We have never raised a bull that does everything so well.
- * This sale presents a great opportunity to get in on the ground floor to introduce his genetics into your herd. Top 25% new CBI (Canadian Balanced Index)
- * We have export qualified semen available on this great bull.



Lot 105

HAMCO RAPTOR 126L

DSH 126L 2330634 February 18, 2023

QUAKER HILL RAMPAGE 0A36 MCC DAYBREAK
HAMCO RAPTOR 3F QHF BLACKCAP 6E2 OF4V16 4355
TOPP PEGGY 6055 CONNEALY CAPITALIST 028
TC PEGGY 5092
BROOKING JASPER 6124 BROOKING BANK NOTE 4040
HAMCO LASSIE 348G BRUSETT CLOVA PRIDE Y136
HAMCO LASSIE 472D (ELITE) PRAIRIELANE OBJECTIVE 7093
BLACK HAMCO LASSIE 169W

	CED	BW	WW	YW	MILK	FR	BW	WW	YW
EPD	+8.0	+1.2	+74	+127	+20	5.7	80	689	1293
ADG	3.13-98		WDA 3.41-104		CE ***	WT 1190		SCR 37 cm	

- * Raptor 126L is a very good, long bodied, well muscled, typical Raptor son with a nice Angus head.
- * Dam Lassie 348G is a good Jasper daughter that did a good job raising this bull WW 689-103 & has a daughter retained in the herd.
- * Very good EPDs WW, YW-top 6% CED- top 15%, BW- top 30%
- * Calving ease with great performance
- * Recommended for heifers.

Lot 106

HAMCO RAPTOR 65L

DSH 65L 2330546 February 7, 2023

QUAKER HILL RAMPAGE 0A36 MCC DAYBREAK
HAMCO RAPTOR 3F QHF BLACKCAP 6E2 OF4V16 4355
TOPP PEGGY 6055 CONNEALY CAPITALIST 028
TC PEGGY 5092
TOPP CAPITALIST 5347 CONNEALY CAPITALIST 028
HAMCO COUNTESS 316F TA 6530 RUBY 3721
BLACK HAMCO COUNTESS 1Y HARB PENDLETON 765 J H
BLACK HAMCO COUNTESS 21W

	CED	BW	WW	YW	MILK	FR	BW	WW	YW
EPD	+15	-1.1	+61	+107	+22	5.1	72	632	1202
ADG	3.16-99		WDA 3.19-97		CE ***	WT 1150		SCR 41 cm	

- * Raptor 65L is a powerful, deep middled, showy, well muscled bull with a wide, muscular rump with a nice Angus head.
- * Dam is a proven cow with 2 daughters retained in the herd.
- * Very good calving ease EPDs CED, BW-top 4% & WW, YW-top 25%
- * Highly recommended for heifers.



Lot 105

Lot 107**HAMCO RAPTOR 95L**

DSH 95L 2330604 February 12, 2023

QUAKER HILL RAMPAGE 0A36
HAMCO RAPTOR 3F
 TOPP PEGGY 6055

PEAK DOT PREDOMINANT 715S
BLACK HAMCO LASS 185Z
 BLACK HAMCO LASS 89X

MCC DAYBREAK
 QHF BLACKCAP 6E2 OF4V16 4355
 CONNEALY CAPITALIST 028
 TC PEGGY 5092
 S A V 004 PREDOMINANT 4438
 LADY OF PEAK DOT 923P
 S A V BISMARCK 5682
 BLACK HAMCO LASS DESIGN 16P

	CED	BW	WW	YW	MILK	FR	BW	WW	YW
EPD	+13	-0.4	+67	+110	+22	5.0	75	695	1218
ADG	2.96-92		WDA 3.23-98		CE ***	WT 1145	SCR 34 cm		

- * Raptor 95L is an impressive, larger framed, typical Raptor son with lots of eye appeal, depth, length & a nice Angus head.
- * Dam Lass 185Z is very proven Predominant daughter out of a Bismarck cow with sons to Dennis Wood, Corey & Glenda Dyck & Last Straw Cattle & 2 retained daughters.
- * Great EPDs CED, BW, WW-top 10% YW-top 20%
- * Highly recommended for heifers.

**Lot 107****Lot 108****HAMCO RAPTOR 32L**

DSH 32L 2324931 February 3, 2023

QUAKER HILL RAMPAGE 0A36
HAMCO RAPTOR 3F
 TOPP PEGGY 6055

S WHITLOCK 179
HAMCO ERICA 109J
 HAMCO ERICA 191C

MCC DAYBREAK
 QHF BLACKCAP 6E2 OF4V16 4355
 CONNEALY CAPITALIST 028
 TC PEGGY 5092
 S CHISUM 6175
 S PRIDE ANN 709
 TA 3088 FOCUS IN 1314
 HAMCO ERICA 146A

	CED	BW	WW	YW	MILK	FR	BW	WW	YW
EPD	+9.0	+1.2	+66	+127	+21	5.5	73	612	1194
ADG	3.67-115		WDA 2.90-88		CE ***	WT 1055	SCR 34.5cm		

- * Raptor 32L is another deep ribbed, long bodied bull with desirable thickness & an ideal Angus head.
- * Dam Erica 109J is a good Whitlock daughter.
- * Good EPDs CED, WW, YW-top 10% or better
- * Highly recommended for heifers

**Lot 108****Lot 109****HAMCO RAPTOR 349L**

DSH 349L 2338233 March 12, 2023

QUAKER HILL RAMPAGE 0A36
HAMCO RAPTOR 3F
 TOPP PEGGY 6055

S WHITLOCK 179
HAMCO ESTELLE 26G
 HAMCO ESTELLE 58E

MCC DAYBREAK
 QHF BLACKCAP 6E2 OF4V16 4355
 CONNEALY CAPITALIST 028
 TC PEGGY 5092
 S CHISUM 6175
 TC FOREVER 6123
 R B TOUR OF DUTY 177
 HAMCO ESTELLE 151C

	CED	BW	WW	YW	MILK	FR	BW	WW	YW
EPD	+8.0	+1.8	+70	+131	+21	6.0	87	633	1219
ADG	3.49-109		WDA 3.23-98		CE ***	WT 1055	SCR 36 cm		

- * Raptor 349L is a correct made, showy bull with good muscle & width & a nice Angus head.
- * Cow Estelle 26G is a well bred Whitlock out of a Tour of Duty cow that has produced a bull to Tyler Plett & a heifer retained.
- * Good EPDs CED-top 20%, WW, YW-top 9%
- Good performance on test
- ADG 3.49-109
- * Recommended for heifers

**Lot 109****Lot 110****HAMCO RAPTOR 260L**

AGH 260L 2336238 March 5, 2023

QUAKER HILL RAMPAGE 0A36
HAMCO RAPTOR 3F
 TOPP PEGGY 6055

TA 6123 WOLF CREEK 3714
HAMCO DESIGNER 308E
 HAMCO DESIGNER JEANS 152B

MCC DAYBREAK
 QHF BLACKCAP 6E2 OF4V16 4355
 CONNEALY CAPITALIST 028
 TC PEGGY 5092
 MOHNEN WOLF CREEK 1871
 TC FOREVER 6123
 S A V RADIANCE 0801
 BLACK AGH DESIGNER JEAN 40N

	CED	BW	WW	YW	MILK	FR	BW	WW	YW
EPD	+10	+1.3	+65	+115	+20	5.9	84	653	1229
ADG	3.43-107		WDA 3.31-100		CE ***	WT 1105	SCR 32.5cm		

- * Raptor 260L is another typical Raptor. If you have seen one, then you have seen them all. He has a little extra frame, very deep made with good width, muscle & a good Angus head.
- * Dam Designer 308E is a Wolf Creek 3714 daughter that has a daughter retained.
- * Very good EPDs CED-top 6%, WW, YW-top 15%, BW-top 30%
- * Recommended for heifers.
- Calving ease & great growth

Lot 111**HAMCO RAPTOR 72L**

DSH 72L 2330552 February 8, 2023

QUAKER HILL RAMPAGE 0A36
HAMCO RAPTOR 3F
 TOPP PEGGY 6055

S A V RAINFALL 6846
HAMCO SAMMY 23J
 HAMCO SAMMY 268E

MCC DAYBREAK
 QHF BLACKCAP 6E2 OF4V16 4355
 CONNEALY CAPITALIST 028
 TC PEGGY 5092
 COLEMAN CHARLO 0256
 S A V BLACKCAP MAY 4136
 TA 3088 FOCUS IN 1314
 HAMCO SAMMY 501B

	CED	BW	WW	YW	MILK	FR	BW	WW	YW
EPD	+11	+0.2	+67	+118	+22	5.6	74	657	1243
ADG	3.63-113		WDA 3.06-93		CE ***	WT 1100		SCR 35 cm	

- * Raptor 72L is a moderate framed, deep middled, correct made, wide bull.
- * Dam is a good Rainfall daughter that did a good job on this calf. We think the Raptor Rainfall cross will be very good. Great maternal genetics—daughters will be keepers.
- * Very good EPDs CED, BW, WW, YW—all top 15%
- * Good performance on test ADG 3.63-113
- * Highly recommended for heifers.

**Lot 111****Lot 112****HAMCO RAPTOR 116L**

DSH 116L 2330624 February 17, 2023

QUAKER HILL RAMPAGE 0A36
HAMCO RAPTOR 3F
 TOPP PEGGY 6055

VISION UNANIMOUS 1418
HAMCO COUNTESS 154F
 HAMCO BLACK COUNTESS 357A

MCC DAYBREAK
 QHF BLACKCAP 6E2 OF4V16 4355
 CONNEALY CAPITALIST 028
 TC PEGGY 5092
 VISIONTOPLINE ROYAL STOCKMAN
 VISION EDELLA 665
 TA 5092 FOCUS IN 0635
 BLACK HAMCO COUNTESS 18X

	CED	BW	WW	YW	MILK	FR	BW	WW	YW
EPD	+10	+0.7	+72	+130	+20	5.7	76	684	1328
ADG	3.42-107		WDA 3.53-107		CE ***	WT 1235		SCR 35 cm	

- * Raptor 116L is a bigger, powerful bull with impressive length, width, muscle & a nice Angus head.
- * Dam Countess 154F is a top end Unanimous cow that did a good job raising this bull & has 3 retained daughters in the herd.
- * Excellent EPDs CED, WW, YW-top 7%, BW-top 20%
- * Calving ease with performance is what makes these Raptor sons so valuable.
- * Good performance on test ADG 3.42-107 WDA 3.53-107
- * Recommended for heifers.

**Lot 112****Lot 113****HAMCO RAPTOR 253L**

DSH 253L 2350819 March 5, 2023

QUAKER HILL RAMPAGE 0A36
HAMCO RAPTOR 3F
 TOPP PEGGY 6055

TA 5092 FOCUS IN 0635
HAMCO LASS 515B (ELITE)
 BLACK HAMCO LASS 288Y

MCC DAYBREAK
 QHF BLACKCAP 6E2 OF4V16 4355
 CONNEALY CAPITALIST 028
 TC PEGGY 5092
 VIN-MAR FOCUS IN 8847
 TC PEGGY 5092
 PRAIRIELANE 7451-2014-5004
 BLACK HAMCO LASS 32X 186R

	CED	BW	WW	YW	MILK	FR	BW	WW	YW
EPD	+4.0	+2.8	+70	+123	+26	5.9	93	707	1118
ADG	2.96-92		WDA 3.13-95		CE *	WT 1045		SCR 33.5cm	

- * Raptor 253L is stamped like all the Raptor sons—wide, long, correct made with a wide muscular rump & a desirable Angus head.
- * Dam Lass 515B is a CAA Elite Dam with 5 calves average WW ratio of 114! Has produced sons to Shayne Kinley, Hylife Ltd. & 2 retained daughters.
- * Very good performance EPDs WW, YW—top 9%
- * Recommended for cows

**Lot 113****Lot 114****HAMCO RAPTOR 25L**

DSH 25L 2324924 February 3, 2023

QUAKER HILL RAMPAGE 0A36
HAMCO RAPTOR 3F
 TOPP PEGGY 6055

S A V RAINFALL 6846
HAMCO COUNTESS 22J
 HAMCO COUNTESS 418G

MCC DAYBREAK
 QHF BLACKCAP 6E2 OF4V16 4355
 CONNEALY CAPITALIST 028
 TC PEGGY 5092
 COLEMAN CHARLO 0256
 S A V BLACKCAP MAY 4136
 TA 6123 WOLF CREEK 3714
 HAMCO COUNTESS 233C

	CED	BW	WW	YW	MILK	FR	BW	WW	YW
EPD	+12	-0.2	+69	+120	+23	5.0	71	685	1198
ADG	2.80-87		WDA 3.01-91		CE ***	WT 1095		SCR 35 cm	

- * Raptor 25L is a typical Raptor—correct made, wide bodied, thick, deep middled bull with a nice Angus head.
- * Dam is a good Rainfall heifer that did a good job raising her first calf WW 685 lbs- 105. I believe the Raptor x Rainfall cross will be great.
- * Again very good EPDs CED, BW, WW, YW-top 10% or better
- * Highly recommended for heifers

Lot 115

HAMCO RAPTOR 197L

DSH 197L 2335964 February 27, 2023

QUAKER HILL RAMPAGE 0A36

HAMCO RAPTOR 3F
TOPP PEGGY 6055

TA 5092 FOCUS IN 0635

HAMCO ROSEBUD 350C

PRAIRIELANE BMARK ROSEBUD 1086

MCC DAYBREAK

QHF BLACKCAP 6E2 OF4V16 4355

CONNEALY CAPITALIST 028

TC PEGGY 5092

VIN-MAR FOCUS IN 8847

TC PEGGY 5092

S A V BISMARCK 5682

PRAIRIELANE OBJEC ROSEBUD 7001

	CED	BW	WW	YW	MILK	FR	BW	WW	YW
EPD	+7.0	+2.1	+68	+113	+25	5.3	92	729	1285
ADG	3.03-94		WDA 3.50-106		CE *	WT 1190		SCR 41 cm	

- * Raptor 197L is another bigger, larger bull that is very correct made with good thickness & a nice Angus head.
- * Dam Rosebud 350C is a Focus In daughter out of a Bismarck cow. She did a great job on this bull WW 729 lbs-108. She has also produced a bull to T&M Olmstead & a daughter retained.
- * Very good performance EPDs WW, YW-top 15%
- * Recommended for cows.



Lot 116

HAMCO RAPTOR 219L

DSH 219L 2343697 March 2, 2023

QUAKER HILL RAMPAGE 0A36

HAMCO RAPTOR 3F
TOPP PEGGY 6055

TOPP CAPITALIST 5347

HAMCO LASS 346G

HAMCO LASS 38E

MCC DAYBREAK

QHF BLACKCAP 6E2 OF4V16 4355

CONNEALY CAPITALIST 028

TC PEGGY 5092

CONNEALY CAPITALIST 028

TA 6530 RUBY 3721

S TITLEST 1145

HAMCO LASS 489C

	CED	BW	WW	YW	MILK	FR	BW	WW	YW
EPD	+11	+0.3	+76	+130	+23	5.6	84	769	1300
ADG	2.74-85		WDA 3.53-107		CE ***	WT 1190		SCR 34 cm	

- * Raptor 219L is a top end, very impressive Raptor son with extra depth, width & very good muscle with a nice Angus head.
- * Dam Lass 346G is a top end cow that did a great job raising this bull WW 769 lbs-116. She also produced a bull to Rollinglane Farm & a daughter retained.
- * Very good EPDs CED, WW, YW-top 5%, BW-top 15%
- * Recommended for heifers—calving ease with great performance



HAMCO RAPTOR 3F

Semen Available

\$35.00 per dose

\$30.00 for 10 more doses

Special prices for Commercial Producers

Raptor 3F is a bull that continues to impress us as he develops and his offspring mature. He is a very efficient breeder and has produced excellent frozen exportable semen. Raptor 3F excels from the standpoint of muscle mass, rib and structure. He stands on an ideal set of legs with good bone and near perfect feet with good depth of heel. He has a great disposition and certainly has that herd bull presence. He is a very good natural breeder. Still breeding very well naturally at 6 years of age.

His EPD profile is impeccable—CED-top 10%, BW-top 45%, WW, YW, carcass weight, REA-top 1% . Some of his calving ease is a result of shorter gestation-averaged 275 days on 22 heifers AI breedings. Once the calves hit the ground their growth is impressive— tremendous spread from birth to weaning. His daughters look very good with tight udders, ideal sized teats and good production. They have weaned some big calves.

Topp Angus has an American semen interest in Raptor and they have used his semen a lot in their very strong program. Topp Angus sold 30 bulls (many ET sons) in their Feb 2022 sale with several of them featured bulls. Paul Topp continues to use Raptor through ET and AI in his program. Certainly some of his great genetics are from his very good Capitalist 028 dam-Topp Peggy 6055. Her ET SAV President sons are also very impressive 6 sold in 2021 sale and 1 sold last year and we are using one as a herdsire.

When you evaluate his sons in this sale we think you will be impressed. Phenotypically very good and very good calving ease with outstanding performance. We are very excited to continue to use him in our herd and in other herds. He certainly also has a lot to offer to commercial herds as well.

Contact David if you are interested in semen off this great bull.



REFERENCE SIRE 1 SON SELLS

Brooking Oklahoma 0058

Reg # (Cdn) 2141080

V A R Discovery 2240 S A V Renovation 6822
S: PF Oklahoma 6625 D: Brooking Primrose 8040
PF 5682 Henrietta Pride 0533 Flag Primrose 10540

CAA CED B.W. W.W. Y.W. Milk
EPD +12 -1.0 +55 +117 +26

* Oklahoma 0058 was our pick of the bulls from the 2021 Brooking Angus Sale. He is a direct son of the great calving ease AI sire PF Oklahoma. His dam is a very good Renovation daughter from the famous Primrose cow family.

* He offers an attractive design while maintaining frame, extra muscle & body shape. He has developed into an impressive sire & he stamps his sons just like him.

* Oklahoma had a minor injury early in the 2022 breeding season, so he went out late so most of his sons are too young to make the yearling sale this year.



Lot 117 HAMCO OKLAHOMA 188L

DSH 188L 2330705 February 27, 2023

PF OKLAHOMA 6625
BROOKING OKLAHOMA 0058
BROOKING PRIMROSE 8040

BASIN EXCITEMENT
HAMCO ERICA 3H
HAMCO ERICA 170F

V A R DISCOVERY 2240
PF 5682 HENRIETTA PRIDE 0533
S A V RENOVATION 6822
FLAG PRIMROSE 10540
BASIN EXPEDITION R156
BASIN LADY S532 AK
CIRCLE A MOGUL 3463
HAMCO ERICA 269C

	CED	BW	WW	YW	MILK	FR	BW	WW	YW
EPD	+11	-1.0	+63	+115	+26	5.6	80	704	1306
ADG	3.62-113		WDA 3.40-103		CE ***	WT 1155		SCR 34 cm	

* Oklahoma 188L is a showy, deep middled, wide rumped bull that looks a lot like his great sire.

* Dam Erica 3H is a good Excitement daughter that did a great job raising this bull WW 704 lbs -106

* Very good EPDs CED, BW-top 6% WW, YW-top 20%

* Good performance on test. ADG 3.62-113

* Recommended for heifers.



Lot 117

REFERENCE SIRE 6 SONS SELL

Topp Big Sky 7046

Reg # (Cdn) 2037433

Connealy Earnan 076E Vin-Mar Focus In 8847
S: Musgrave Big Sky D: TA Marcia 0616
SAV Primrose 7861 TC Marcia 6170

CAA CED B.W. W.W. Y.W. Milk
EPD +13.0 -0.6 +51 +94 +27

* Topp Big Sky 7046 was one of our picks from the 2018 Topp Angus sale.

* His dam Marcia 0616 is certainly a top donor & this bull was our pick out of an impressive group of full ET brothers.

* Phenotypically very correct. His EPDs are exceptional.

* Calves are born easy with good performance & made the right way.

* He developed into an impressive herd sire & he stamps his calves like himself.



Lot 118 HAMCO BIG SKY 244L

DSH 244L 2336233 March 4, 2023

MUSGRAVE BIG SKY
TOPP BIG SKY 7046
TA MARCIA 0616

JANSSEN ATLANTA 5013
HAMCO ERICA 409G
BLACK HAMCO ERICA 168Z

CONNEALY EARNAN 076E
SAV PRIMROSE 7861
VIN-MAR FOCUS IN 8847
TC MARCIA 6170
S A V HARVESTOR 0338
S A V MISS BOBBIE 0045
PRAIRIELANE OBJECTIVE 7093
BLACK HAMCO ERICA 12W

	CED	BW	WW	YW	MILK	FR	BW	WW	YW
EPD	+10	+0.9	+54	+94	+28	5.9	80	699	1169
ADG	3.09-97		WDA 3.18-97		CE ***	WT 1065		SCR 37 cm	

* Big Sky 244L is a deep ribbed, wide topped bull with a wide muscular rump & a nice Angus head.

* Dam Erica 409G is a proven good Atlanta daughter that has produced bulls to Todd Kozera & Shayne/Cara Kinley.

* Good calving ease EPDs CED-top 10% BW-top 25%

* Recommended for heifers



Lot 118

Lot 119**HAMCO BIG SKY 206L**

DSH 206L 2335971 February 28, 2023

MUSGRAVE BIG SKY

TOPP BIG SKY 7046

TA MARCIA 0616

S A V PIONEER 7301

HAMCO LASS 57B

BLACK HAMCO LASS 376W

CONNEALY EARNAN 076E

SAV PRIMROSE 7861

VIN-MAR FOCUS IN 8847

TC MARCIA 6170

BASIN EXPEDITION R156

BASIN LADY S532 AK

PRAIRIELANE 7451-2014-5004

BLACK HAMCO LASS 179R

	CED	BW	WW	YW	MILK	FR	BW	WW	YW
EPD	+14	-1.5	+46	+81	+26	5.3	73	637	1160
ADG	3.43-107		WDA 3.14-95		CE ***	WT 1065		SCR 35 cm	

* Big Sky 206L is a powerful, moderate framed bull with very good depth & length of body, & a nice Angus head.

* Dam Lass 57B is a valuable proven Pioneer cow with 3 retained daughters, and sons to Scott Stevens, Roland Penner & 7L Ranch.

* Very good performance on test ADG 3.43-107

* Very good calving ease EPDs CED, BW-top 3%

* Highly recommended for heifers.

**Lot 119****Lot 120****HAMCO BIG SKY 314L**

DSH 314L 2337697 March 9, 2023

MUSGRAVE BIG SKY

TOPP BIG SKY 7046

TA MARCIA 0616

BROOKING JASPER 6124

HAMCO ESTELLE 188F

HAMCO ESTELLE 234C(PREMIER)

CONNEALY EARNAN 076E

SAV PRIMROSE 7861

VIN-MAR FOCUS IN 8847

TC MARCIA 6170

BROOKING BANK NOTE 4040

BRUSETT CLOVA PRIDE Y136

YOUNG DALE XCALIBER 32X

PRAIRIELANE 4193 ESTELLE 6025

	CED	BW	WW	YW	MILK	FR	BW	WW	YW
EPD	+6.0	+2.0	+6	+118	+26	6.2	86	728	1174
ADG	3.09-97		WDA 3.27-99		CE **	WT 1080		SCR 33 cm	

* Big Sky 314L is stamped like all the Big Sky sons—deep bodied, wide made with extra length & a desirable Angus head.

* Dam Estelle 188F is a well bred Jasper daughter that did a good job raising this bull. WW 728 lbs- 109 & has a daughter retained.

* Very good performance EPDs WW, YW-top 10%

* Recommended for cows or well grown out heifers.

**Lot 120****Lot 121****HAMCO BIG SKY 327L**

DSH 327L 2338214 March 10, 2023

MUSGRAVE BIG SKY

TOPP BIG SKY 7046

TA MARCIA 0616

TOPP REKNOWN 6251

HAMCO TIBBIE 443G

HAMCO BLACK TIBBIE 385A

CONNEALY EARNAN 076E

SAV PRIMROSE 7861

VIN-MAR FOCUS IN 8847

TC MARCIA 6170

S A V REOWN 3439

S A V ABIGALE 0312

TA 5092 FOCUS IN 0635

BLACK HAMCO TIBBIE 76X

	CED	BW	WW	YW	MILK	FR	BW	WW	YW
EPD	+11	0.0	+53	+93	+30	5.5	83	664	1133
ADG	3.42-107		WDA 3.07-93		CE ***	WT 1010		SCR 33.5cm	

* Big Sky 327L is another deep sided, correct made, larger framed bull with good width & a nice Angus head.

* Dam Tibbie 443G is a Reknown daughter that did a good job raising this bull & a daughter retained.

* Very good calving ease EPDs - CED, BW-top 10%

* Good performance on test ADG 3.42-107

* Recommended for heifers.

**Lot 121**

Lot 122**HAMCO BIG SKY 373L**

DSH 373L 2338262 March 14, 2023

MUSGRAVE BIG SKY
TOPP BIG SKY 7046
 TA MARCIA 0616

CONNEALY EARNAN 076E
 SAV PRIMROSE 7861
 VIN-MAR FOCUS IN 8847
 TC MARCIA 6170
 MOHNEN BRUSHPOPPER 295
 BALDRIDGE BLACKBIRD M565
 S A V RESOURCE 1441
 BLACK HAMCO LASS 32X 186R

MOHNEN LONG DISTANCE 1639
HAMCO LASS 20D
 HAMCO LASS 122B

	CED	BW	WW	YW	MILK	FR	BW	WW	YW
EPD	+10	0.0	+59	+106	+28	5.5	84	719	1277
ADG	2.99-93		WDA 3.49-106		CE ***	WT 1135		SCR 35.5cm	

- * WOW! This Big Sky son 373L is an impressive, deep, wide, structurally correct, powerful bull with a desirable Angus head.
- * Dam Lass 20D is a very proven Long Distance daughter out of a Resource cow that has 2 daughters retained & bulls to Mateychuk Farms & Robert Korchak.
- * Very good EPDs CED, BW-top 10% WW, YW-top 30%
- * A lot of good bulls up close in this pedigree
- * Recommended for heifers.

**Lot 122****Lot 123****HAMCO BIG SKY 279L**

DSH 279L 2337649 March 7, 2023

MUSGRAVE BIG SKY
TOPP BIG SKY 7046
 TA MARCIA 0616

CONNEALY EARNAN 076E
 SAV PRIMROSE 7861
 VIN-MAR FOCUS IN 8847
 TC MARCIA 6170
 BROOKING BANK NOTE 4040
 BRUSETT CLOVA PRIDE Y136
 PEAK DOT PREDOMINANT 68W
 BLACK HAMCO PRINCESS 523Y

BROOKING JASPER 6124
HAMCO PRINCESS 248F
 HAMCO PREDOMINANT 345C

	CED	BW	WW	YW	MILK	FR	BW	WW	YW
EPD	+10	0.0	+55	+99	+24	5.4	74	678	1182
ADG	2.96-92		WDA 3.24-98		CE ***	WT 1075		SCR 34 cm	

- * Big Sky 279L is another typical Big Sky son—deep middled, larger framed, showy bull with nice neck extension & herd bull presence.
- * Dam Princess 248F is a good Jasper daughter that did a good job raising this bull & has a daughter retained in the herd.
- * Very good EPDs - CED, BW-top 10%
- * Recommended for heifers.

**Lot 123****REFERENCE SIRE 8 SONS SELL****Topp 38 Special 9725**

Reg # (Cdn) 2214682

EF Commando 1366
 S: Baldrige 38 Special
 Baldrige Isabel Y69

Mohnen Wolf Creek 1871
 D: TA Barbara 3702
 TC Barbara 3088

CAA	CED	B.W.	W.W.	Y.W.	Milk
EPD	+12	-0.6	+54	+91	+24

- * Topp 38 Special 9725 was our pick of the 2021 Topp Angus Sale.
- * He is an impressive bull—very correct made, with impressive width, deep & muscle shape & stands on excellent feet & legs.
- * He has excellent EPDs CED, BW-top 7% WW, YW-top 55% or better
- * His first calves look very good & he calves very easy.

**Lot 124****HAMCO SPECIAL 16L**

DSH 16L 2324916 February 1, 2023

BALDRIDGE 38 SPECIAL
TOPP 38 SPECIAL 9725
 TA BARBARA 3702

EF COMMANDO 1366
 BALDRIDGE ISABEL Y69
 MOHNEN WOLF CREEK 1871
 TC BARBARA 3088
 QUAKER HILL RAMPAGE 0A36
 TOPP PEGGY 6055
 BROOKING JASPER 6124
 HAMCO ERICA 258C

HAMCO RAPTOR 3F
HAMCO ERICA 338J
 HAMCO ERICA 196F

	CED	BW	WW	YW	MILK	FR	BW	WW	YW
EPD	+13	-0.4	+68	+118	+24	5.0	66	698	1299
ADG	3.29-103		WDA 3.22-98		CE ***	WT 1180		SCR 38 cm	

- * Special 16L is a moderate framed, correct made, deep made bull that is built like a tank with an ideal calving ease head.
- * Dam Erica 338J is a well bred Raptor daughter that did a great job on her first calf WW 698 lbs -105
- * Very good EPDs CED, BW, WW, YW-top 15% or better
- * Highly recommended for heifers.

**Lot 124**

Lot 125**HAMCO SPECIAL 18L**

DSH 18L 2324918 February 1, 2023

BALDRIDGE 38 SPECIAL
TOPP 38 SPECIAL 9725
TA BARBARA 3702HAMCO RAPTOR 3F
HAMCO LASSIE 146J
HAMCO LASSIE 31FEF COMMANDO 1366
BALDRIDGE ISABEL Y69
MOHNEN WOLF CREEK 1871
TC BARBARA 3088
QUAKER HILL RAMPAGE 0A36
TOPP PEGGY 6055
BROOKING JASPER 6124
HAMCO LASSIE 99C

	CED	BW	WW	YW	MILK	FR	BW	WW	YW
EPD	+10	+0.8	+62	+110	+21	5.0	74	633	1103
ADG	3.20-100		WDA 2.75-83		CE ***	WT 1005		SCR 34 cm	

- * Special 18L is a moderate framed, correct, deep middled bull with good width & muscle & a desirable Angus calving ease head.
- * Dam Lassie 146J is a good Raptor daughter & I think 38 Special 9725 is an ideal cross on Raptor daughters.
- * Good EPDs CED, BW, WW, YW-top 25% or better
- * Great calving ease with lots of performance
- * Recommended for heifers

**Lot 126****HAMCO SPECIAL 97L**

DSH 97L 2330606 February 13, 2023

BALDRIDGE 38 SPECIAL
TOPP 38 SPECIAL 9725
TA BARBARA 3702SAV RAINFALL 6846
HAMCO LASS 17J
HAMCO LASS 346GEF COMMANDO 1366
BALDRIDGE ISABEL Y69
MOHNEN WOLF CREEK 1871
TC BARBARA 3088
COLEMAN CHARLO 0256
SAV BLACKCAP MAY 4136
TOPP CAPITALIST 5347
HAMCO LASS 38E

	CED	BW	WW	YW	MILK	FR	BW	WW	YW
EPD	+13	-1.1	+57	+100	+26	5.0	72	682	1258
ADG	2.83-88		WDA 3.14-95		CE ***	WT 1110		SCR 35 cm	

- * Special 97L is a moderate framed, deep ribbed, thick made bull with a wide muscular rump & a nice Angus calving ease head.
- * Dam Lass 17J is a good Rainfall daughter that did a good job on this bull. WW 682 lbs -104. Great maternal genetics—daughters will be keepers.
- * Very good calving ease EPDs CED, BW-top 4%, WW, YW-top 45%
- * Highly recommended for heifers

**Lot 127****HAMCO SPECIAL 128L**

DSH 128L 2330636 February 19, 2023

BALDRIDGE 38 SPECIAL
TOPP 38 SPECIAL 9725
TA BARBARA 3702TOPP DONALD 8061
HAMCO ESTELLE 137J
HAMCO ESTELLE 26GEF COMMANDO 1366
BALDRIDGE ISABEL Y69
MOHNEN WOLF CREEK 1871
TC BARBARA 3088
SVA THE DONALD 4030
TA FOREVER 3738
S WHITLOCK 179
HAMCO ESTELLE 58E

	CED	BW	WW	YW	MILK	FR	BW	WW	YW
EPD	+14	-1.2	+52	+99	+24	5.0	72	612	1196
ADG	3.26-102		WDA 2.93-89		CE ***	WT 1020		SCR 35 cm	

- * Special 128L is another moderate framed, very correct made bull with good depth & width & a muscular rump & an ideal Angus head.
- * Dam Estelle 137J is a very well bred heifer with a lot of very good bulls in her pedigree.
- * Elite calving ease EPDs CED, BW-top 4% & yet WW, YW-top 55% or better
- * Highly recommended for heifers

**Lot 128****HAMCO SPECIAL 118L**

DSH 118L 2330627 February 17, 2023

BALDRIDGE 38 SPECIAL
TOPP 38 SPECIAL 9725
TA BARBARA 3702TOPP CAPITALIST 5347
HAMCO LASS 406J
HAMCO LASS 292EEF COMMANDO 1366
BALDRIDGE ISABEL Y69
MOHNEN WOLF CREEK 1871
TC BARBARA 3088
CONNEALY CAPITALIST 028
TA 6530 RUBY 3721
TA 6123 WOLF CREEK 3714
HAMCO LASS 515B

	CED	BW	WW	YW	MILK	FR	BW	WW	YW
EPD	+8.0	+1.5	+51	+99	+23	5.0	84	566	1255
ADG	2.96-92		WDA 2.99-91		CE ***	WT 1045		SCR 36 cm	

- * Special 118L is another typical 38 Special 9725 son—moderate frame, with good depth & width & a muscular rump with an Ideal Angus calving ease head.
- * Dam Lass 406J is a Capitalist daughter out of a Wolf Creek dam so very good calving ease genetics.
- * Good calving ease EPDs CED, BW-top 25%
- * Recommended for heifers

Lot 129**HAMCO SPECIAL 130L**

DSH 130L 2330638 February 19, 2023

BALDRIDGE 38 SPECIAL
TOPP 38 SPECIAL 9725
TA BARBARA 3702BASIN EXCITEMENT
HAMCO ERICA 27J
HAMCO ERICA 162GEF COMMANDO 1366
BALDRIDGE ISABEL Y69
MOHNEN WOLF CREEK 1871
TC BARBARA 3088
BASIN EXPEDITION R156
BASIN LADY S532 AK
CIRCLE A MOGUL 3463
HAMCO ERICA 456D

	CED	BW	WW	YW	MILK	FR	BW	WW	YW
EPD	+11	-0.4	+51	+88	+23	5.0	73	609	1177
ADG	3.03-94		WDA 2.89-88		CE ***	WT 1005		SCR 34 cm	

- * Special 130L is stamped the same ways as all the 38 Special 9725 sons—moderated framed, correct made with good depth, thickness & muscle shape & a calving ease Angus head.
- * Dam Erica 27J is a well bred Excitement daughter out of a Mogul cow.
- * Very good calving ease EPDs CED, BW-top 9% or better.
- * Highly recommended for heifers.

**Lot 130****HAMCO SPECIAL 137L**

DSH 137L 2330646 February 20, 2023

BALDRIDGE 38 SPECIAL
TOPP 38 SPECIAL 9725
TA BARBARA 3702HAMCO RAPTOR 3F
HAMCO TIBBIE 142J
HAMCO TIBBIE 209FEF COMMANDO 1366
BALDRIDGE ISABEL Y69
MOHNEN WOLF CREEK 1871
TC BARBARA 3088
QUAKER HILL RAMPAGE 0A36
TOPP PEGGY 6055
CIRCLE A MOGUL 3463
HAMCO TIBBIE 511C

	CED	BW	WW	YW	MILK	FR	BW	WW	YW
EPD	+10	+0.6	+65	+114	+22	5.0	75	680	1195
ADG	2.89-90		WDA 3.01-91		CE ***	WT 1045		SCR 33.5m	

- * Special 137L is another 38 Special son built the same way—moderate framed, correct made, thick made, wide bodied bull with a nice Angus head.
- * Dam 142J is a good Raptor first calver daughter that did a good job raising this bull WW 680 lbs- 103
- * We really like the 38 Special x Raptor cross.
- * Very good EPDs CED, BW, WW, YW-all top 20%
- * Calving ease with great performance.
- * Recommended for heifers.

**Lot 131****HAMCO SPECIAL 142L**

DSH 142L 2330655 February 21, 2023

BALDRIDGE 38 SPECIAL
TOPP 38 SPECIAL 9725
TA BARBARA 3702HAMCO RAPTOR 3F
HAMCO LASS 40J
HAMCO LASS 197GEF COMMANDO 1366
BALDRIDGE ISABEL Y69
MOHNEN WOLF CREEK 1871
TC BARBARA 3088
QUAKER HILL RAMPAGE 0A36
TOPP PEGGY 6055
BROOKING JASPER 6124
HAMCO LASS 81D

	CED	BW	WW	YW	MILK	FR	BW	WW	YW
EPD	+11	-0.1	+66	+113	+21	5.0	71	660	1174
ADG	3.03-94		WDA 2.95-90		CE ***	WT 1020		SCR 34 cm	

- * Special 142L is another well muscled, typical 38 Special 9725 with desirable depth, width & well muscled with a nice Angus head.
- * Dam 40J is a well bred first calver out of Raptor & a Mogul grandam.
- * Very good EPDs CED, BW-top 10%, WW, YW-top 25%
- * Highly recommended for heifers.

*View from the bull pens*

REFERENCE SIRE 7 SONS SELL

Topp Donald 8061

Reg # (Cdn) 2133003

Sitz Investment 660Z Mohnen Wolf Creek 1871
S: SVA The Donald 4030 D: TA Forever 3738
SVA Eileen 9051 TC Forever 6123

CAA CED B.W. W.W. Y.W. Milk
EPD +17.0 -1.3 +60 +117 +27

- * Topp Donald 8061 was our pick from the 2019 Topp Angus Sale.
- * A full ET brother Topp Republic was the high seller to Janssen Angus.
- * Tremendous EPDs—CED, BW-top 3%, YW-top 15%, WW-top 30%
- * We have been very impressed with his calves so far. Used heavily 2022 breeding season on heifers. All his calves are quiet.



Lot 132 HAMCO DONALD 269L

DSH 269L 2336249 March 6, 2023

SVA THE DONALD 4030
TOPP DONALD 8061
TA FOREVER 3738

MOHNEN DYNAMITE 1356
HAMCO ERICA 146A
BLACK HAMCO ERICA 265R(PREMIER)
BALDRIDGE KABOOM K243 KCF
MOHNEN JILT 910
PRARIELANE IDEAL 418-0051(ELITE)
YOUNG DALE ERICA 193L

	CED	BW	WW	YW	MILK	FR	BW	WW	YW
EPD	+8.0	+1.5	+60	+110	+22	5.4	83	664	1143
ADG	3.38-106		WDA 3.14-95		CE ***	WT 1045		SCR 35 cm	

- * Donald 269L is correct made, deep middled, with a wide muscular rump & a nice Angus head.
- * Dam Erica 146A is a proven Dynamite daughter with sons to Tri Bar Ranching, Hylife, Jarvis Whyte & 3 retained daughters.
- * Very good EPDs CED-top 15%, BW, WW, YW-top 35% or better
- * Recommended for heifers.



Lot 132

Lot 133 HAMCO DONALD 299L

DSH 299L 2337685 March 8, 2023

SVA THE DONALD 4030
TOPP DONALD 8061
TA FOREVER 3738

BASIN EXCITEMENT
HAMCO LASS 35E
HAMCO LASS 317C
SITZ INVESTMENT 660Z
SVA EILEEN 9051
MOHNEN WOLF CREEK 1871
TC FOREVER 6123
BASIN EXPEDITION R156
BASIN LADY S532 AK
PRARIELANE OBJECTIVE 7093
BLACK HAMCO LASS 380Y

	CED	BW	WW	YW	MILK	FR	BW	WW	YW
EPD	+15	-0.9	+59	+113	+26	5.7	76	665	1227
ADG	3.61-113		WDA 3.32-101		CE ***	WT 1100		SCR 33.5cm	

- * Donald 299L is a deep, wide, thick made, well muscled bull with a desirable Angus head.
- * Dam Lass 35E is a good Excitement daughter that has produced bulls to Malarky Farms & Northpride Farms.
- * Elite calving ease EPDs CED, BW-top 5%, YW-top 15%, WW, Milk-top 35%
- * Good performance on test ADG 3.61-113
- * Highly recommended for heifers.



Lot 133

Lot 134 HAMCO DONALD 209L

DSH 209L 2335974 March 1, 2023

SVA THE DONALD 4030
TOPP DONALD 8061
TA FOREVER 3738

BROOKING JASPER 6124
HAMCO LASSIE 503F
HAMCO LASSIE 342C
SITZ INVESTMENT 660Z
SVA EILEEN 9051
MOHNEN WOLF CREEK 1871
TC FOREVER 6123
BROOKING BANK NOTE 4040
BRUSETT CLOVA PRIDE Y136
TA 5092 FOCUS IN 0635
BLACK HAMCO LASSIE 211W

	CED	BW	WW	YW	MILK	FR	BW	WW	YW
EPD	+10	+1.1	+60	+106	+28	5.4	83	704	1256
ADG	3.03-94		WDA 3.42-104		CE ***	WT 1155		SCR 41 cm	

- * Donald 209L is a very deep middled, straight topped bull with a wide muscular rump.
- * Dam Lassie 503F is a proven Jasper daughter that did a good job on this bull.
- * WW 704 lbs- 106, a son to Schweitzer Farms & a retained daughter.
- * Very good EPDs CED, BW, WW, YW, Milk-all top 30% or better
- * Recommended for heifers.



Lot 135**HAMCO DONALD 368L**

DSH 368L 2338257 March 14, 2023

SVA THE DONALD 4030
TOPP DONALD 8061
TA FOREVER 3738SITZ INVESTMENT 660Z
SVA EILEEN 9051
MOHNEN WOLF CREEK 1871
TC FOREVER 6123
DIAMOND IN THE ROUGH
CIRCLE A FOREVER LADY 7226
COR VET CONCLUSIVE 7W
BLACK HAMCO LASS 192WCIRCLE A MOGUL 3463
HAMCO LASS 282F
HAMCO LASS 422C(ELITE)

	CED	BW	WW	YW	MILK	FR	BW	WW	YW
EPD	+12	+0.3	+52	+97	+25	5.1	82	620	1243
ADG	3.05-95		WDA 3.32-101		CE ***	WT 1080		SCR 33 cm	

- * Donald 368L is a moderate framed, very thick, deep made bull that is built like a tank & has a nice Angus head.
- * Dam Lass 282F is a proven Mogul daughter with 2 retained daughters.
- * Very good calving ease CED-top 4%, BW-top 15% & yet average performance WW, YW, Milk-top 50% or better.
- * Recommended for heifers.

**Lot 135****Lot 136****HAMCO DONALD 371L**

DSH 371L 2338260 March 14, 2023

SVA THE DONALD 4030
TOPP DONALD 8061
TA FOREVER 3738SITZ INVESTMENT 660Z
SVA EILEEN 9051
MOHNEN WOLF CREEK 1871
TC FOREVER 6123
VIN-MAR FOCUS IN 8847
TC PEGGY 5092
PEAK DOT DYNAMITE 146U
BLACK HAMCO LASS 148W 283RTA 5092 FOCUS IN 0635
HAMCO LASS 412E
BLACK HAMCO LASS 442Y

	CED	BW	WW	YW	MILK	FR	BW	WW	YW
EPD	+10	+1.6	+62	+119	+26	6.3	86	721	1248
ADG	3.16-99		WDA 3.43-104		CE **	WT 1115		SCR 36.5cm	

- * WOW! Donald 371L is a top end, deep made, wide rumped bull with extra thickness, extra frame & a desirable Angus head.
- * Dam Lass 412E is a proven Focus In 0635 daughter that did a great job on this bull WW 721 lbs- 108 & has 2 daughters retained.
- * Good EPDs CED, YW-top 10%, WW-top 25%, BW-top 40%
- * Recommended for cows or well grown out heifers.

**Lot 136****Lot 137****HAMCO DONALD 336L**

DSH 336L 2338221 March 11, 2023

SVA THE DONALD 4030
TOPP DONALD 8061
TA FOREVER 3738SITZ INVESTMENT 660Z
SVA EILEEN 9051
MOHNEN WOLF CREEK 1871
TC FOREVER 6123
S A V 004 PREDOMINANT 4438
LADY OF PEAK DOT 615K
S A V BISMARCK 5682
BLACK HAMCO ERICA 12WPEAK DOT PREDOMINANT 68W
HAMCO ERICA 409F
HAMCO ERICA 219A

	CED	BW	WW	YW	MILK	FR	BW	WW	YW
EPD	+9.0	+1.1	+53	+97	+27	5.9	85	674	1200
ADG	3.20-100		WDA 3.28-100		CE ***	WT 1075		SCR 41 cm	

- * Donald 336L is a typical Donald 8061 with a little more frame, deep middled, correct made with good width & muscle.
- * Dam Erica 409F is a proven Predominant daughter out of a Bismarck cow so great maternal genetics here. Has produced a son to Dylan Erickson & a heifer retained.
- * Good calving ease CED-top 10%, BW- top 30%
- * Recommended for heifers.

Lot 138**HAMCO DONALD 278L**

DSH 278L 2336256 March 7, 2023

SVA THE DONALD 4030

TOPP DONALD 8061

TA FOREVER 3738

SITZ INVESTMENT 660Z

SVA EILEEN 9051

MOHNEN WOLF CREEK 1871

TC FOREVER 6123

PEAK DOT PREDOMINANT 715S

HAMCO PRINCESS 335A

BALDRIDGE KABOOM K243 KCF

MOHNEN JILT 910

BLACK HAMCO PRINCESS 523Y

PRAIRIELANE 7451-2014-5004

BLACK HAMCO MISS PRINCESS 17L

	CED	BW	WW	YW	MILK	FR	BW	WW	YW
EPD	+10	+1.6	+62	+119	+26	6.3	86	721	1248
ADG	3.16-99		WDA 3.43-104		CE ***	WT 1115		SCR 36.5cm	

* Donald 278L is a typical Donald 8061- deep middled, straight topped, wide

bodied bull with a wide muscular rump & a desirable Angus head.

* Dam Princess 335A is a proven cow with a son to William Turner & 3 daughters retained.

* Good calving ease EPDs CED, BW- top 15%

* Recommended for heifers

**Lot 138****REFERENCE SIRE 4 SONS SELL****Topp Mogul 8310**

Reg # (Cdn) 2181548

Diamond in the Rough

S: Circle A Mogul 3463

Circle A Forever Lady 7226

Mohnen Wolf Creek 1871

D: Topp Pride 5405

TC Pride 4226

CAA CED B.W. W.W. Y.W. Milk

EPD +7.0 +2.0 +60 +112 +30

* Topp Mogul 8310 was one of our picks in the Topp Angus 2020 sale.

* When I saw this bull I knew I wanted to own him. Phenotypically flawless.

* Impressive EPDs CED-top 30%, WW, YW, Milk-top 10%

* Stamps his calves like him.

**Lot 139****HAMCO MOGUL 207L**

DSH 207L 2335972 February 28, 2023

CIRCLE A MOGUL 3463

TOPP MOGUL 8310

TOPP PRIDE 5405

DIAMOND IN THE ROUGH

CIRCLE A FOREVER LADY 7226

MOHNEN WOLF CREEK 1871

TC PRIDE 4226

S A V 004 DENSITY 4336

HAMCO LASSIE 82A

BLACK HAMCO LASSIE 462X

S A V 8180 TRAVELER 004

S A V MAY 7238

PRAIRIELANE 7451-2014-5004

BLACK HAMCO LASSIE 166R

	CED	BW	WW	YW	MILK	FR	BW	WW	YW
EPD	+9.0	+0.9	+52	+97	+25	5.6	82	627	1174
ADG	2.87-90		WDA 3.16-96		CE ***	WT 1070		SCR 35.5cm	

* Mogul 207L is a very good, straight topped, correct made bull with very good depth, wide rump & a nice Angus head.

* Dam Lassie 82A is a top end cow that has 3 daughters retained, & sons to Wes Meggison, McDonald Stock Farms, Chad Miller & Carmen Erickson.

* Very good EPDs CED-top 10%, BW-top 25%

* Recommended for heifers

**Lot 139****Lot 140****HAMCO MOGUL 363L**

DSH 363L 2338253 March 13, 2023

CIRCLE A MOGUL 3463

TOPP MOGUL 8310

TOPP PRIDE 5405

DIAMOND IN THE ROUGH

CIRCLE A FOREVER LADY 7226

MOHNEN WOLF CREEK 1871

TC PRIDE 4226

TA 5092 FOCUS IN 0635

HAMCO COUNTESS 534E

BLACK HAMCO ERICA 168Z

VIN-MAR FOCUS IN 8847

TC PEGGY 5092

PRAIRIELANE OBJECTIVE 7093

BLACK HAMCO ERICA 12W

	CED	BW	WW	YW	MILK	FR	BW	WW	YW
EPD	+7.0	+1.4	+49	+94	+31	5.3	83	658	1103
ADG	3.09-97		WDA 3.05-93		CE ***	WT 995		SCR 34.5cm	

* Mogul 363L is well muscled, thick made, with extra length & a nice Angus head.

* Dam Countess 534E is a proven Focus In that has a daughter retained & bulls to Interlake Land Farms & David Stewart.

* Good EPDs CED-top 25%, BW-top 35%

* Recommended for heifers.

**Lot 140**

Lot 141**HAMCO MOGUL 372L**

DSH 372L 2338261 March 14, 2023

CIRCLE A MOGUL 3463

TOPP MOGUL 8310

TOPP PRIDE 5405

ELLINGSON HOMEGROWN 6035

HAMCO ESTELLE 61G

HAMCO ESTELLE 27E

DIAMOND IN THE ROUGH

CIRCLE A FOREVER LADY 7226

MOHNEN WOLF CREEK 1871

TC PRIDE 4226

CTS REMEDY 1T01

EA BLANCHE 4137

R B TOUR OF DUTY 177

HAMCO ESTELLE 139C

	CED	BW	WW	YW	MILK	FR	BW	WW	YW
EPD	+5.0	+2.4	+67	+121	+32	6.3	85	735	1272
ADG	3.08-96		WDA 3.45-105		CE **	WT 1120		SCR 33.5cm	

* Mogul 372L is a very impressive, larger framed, correct made bull with a wide, muscular rump & additional length & depth.

* Dam Estelle 61G is a proven Homegrown daughter that did a great job on this calf & has 2 daughters retained.

* Very good performance EPDs WW, YW, Milk-top 10% or better

* Recommended for cows or well grown out heifers.

**Lot 141****Lot 142****HAMCO MOGUL 381L**

DSH 381L 2338269 March 15, 2023

CIRCLE A MOGUL 3463

TOPP MOGUL 8310

TOPP PRIDE 5405

MOHNEN PULSE 533

HAMCO ERICA 115F

HAMCO ERICA 171B

DIAMOND IN THE ROUGH

CIRCLE A FOREVER LADY 7226

MOHNEN WOLF CREEK 1871

TC PRIDE 4226

MOHNEN HEARTRATE 1751

MOHNEN JILT 2360

TA 5016 ACE 1313

BLACK HAMCO ERICA 83Y

	CED	BW	WW	YW	MILK	FR	BW	WW	YW
EPD	+6.0	+0.9	+48	+91	+29	6.1	86	648	1228
ADG	2.96-92		WDA 3.32-101		CE ***	WT 1075		SCR 32.5 cm	

* Mogul 381L is a larger framed, correct made, showy bull with good width, depth & a nice Angus head.

* Dam Erica 115F is a proven Pulse daughter that has produced a bull to Ken Walter & 2 daughters retained.

* Good EPDs CED, BW-top 30% or better

* Recommended for heifers.

**Lot 142****REFERENCE SIRE 5 SONS SELL****Topp 38 Special 1016**

Reg # (Cdn) 2325222

EF Commando 1366

S: Baldridge 38 Special

Baldridge Isabel Y69

Mohnen Wolf Creek 1871

D: Topp Ruby 5307

TC Barbara 3088

CAA CED B.W. W.W. Y.W. Milk

EPD +11 -0.4 +59 +102 +27

* This bull was purchased from the 2022 Topp Bull sale. He was our choice from a flush of full brothers. His dam Ruby 5307 is a feature ET donor for Topp Angus.

* Great EPDs—CED, BW-top 9% or better, WW,YW, Milk-top 35% or better

* His first set of calves came easy & have developed very well.

* His maternal genetics are great so his daughters should be keepers.

**Lot 143****HAMCO SPECIAL 288L**

DSH 288L 2337672 March 7, 2023

BALDRIDGE 38 SPECIAL

TOPP 38 SPECIAL 1016

TOPP RUBY 5307

BROOKING JASPER 6124

HAMCO LASS 247H

HAMCO LASS 292E

EF COMMANDO 1366

BALDRIDGE ISABEL Y69

MOHNEN WOLF CREEK 1871

TC RUBY 3708

BROOKING BANK NOTE 4060

BRUSETT CLOVA PRIDE Y136

TA 6123 WOLF CREEK 3714

HAMCO LASS 515B

	CED	BW	WW	YW	MILK	FR	BW	WW	YW
EPD	+11	-0.6	+51	+91	+25	5.7	73	616	1149
ADG	3.36-105		WDA 2.98-91		CE ***	WT 990		SCR 32.5 cm	

* Special 288L is a correct made bull with good depth of body & width & a wide muscular rump.

* Dam Lass 247H is a good Jasper daughter out of Wolf Creek 3714 so the maternal genetics in this bull will be great. Very good calving ease EPDs CED, BW-top 7%

* Good performance on test.

* Recommended for heifers.



Lot 144**HAMCO SPECIAL 322L**

DSH 322L 2338209 March 10, 2023

BALDRIDGE 38 SPECIAL
TOPP 38 SPECIAL 1016
 TOPP RUBY 5307

S A V PRESIDENT 6847
HAMCO PEGGY 128H
 TOPP PEGGY 6055

EF COMMANDO 1366
 BALDRIDGE ISABEL Y69
 MOHNEN WOLF CREEK 1871
 TC RUBY 3708
 COLEMAN CHARLO 0256
 S A V BLACKCAP MAY 4136
 CONNEALY CAPITALIST 028
 TC PEGGY 5092

	CED	BW	WW	YW	MILK	FR	BW	WW	YW
EPD	+6.0	+2.2	+58	+100	+24	5.0	87	591	1242
ADG	3.45-108		WDA 3.16-96		CE **	WT 1040		SCR 32.5cm	

- * Special 322L is a moderate framed, deep middled, thick made, wide bull that is built like a tank & has a nice Angus Head.
- * Dam Peggy 128H is an ET cow out of Raptor's mother & sired by SAV President So great genetics here. She produced a good bull to Common Farms last year.
- * Balanced EPDs-all top 55% or better
- * Good performance on test ADG 3.45-108
- * Recommended for cows or well grown out heifers

**Lot 145****HAMCO SPECIAL 227L**

DSH 227L 2335994 March 2, 2023

BALDRIDGE 38 SPECIAL
TOPP 38 SPECIAL 1016
 TOPP RUBY 5307

MUSGRAVE 316 STUNNER
HAMCO COUNTESS 59H
 HAMCO COUNTESS 154F

EF COMMANDO 1366
 BALDRIDGE ISABEL Y69
 MOHNEN WOLF CREEK 1871
 TC RUBY 3708
 LD CAPITALIST 316
 MCATL BLACKBIRD 831-1378
 VISION UNANIMOUS 1418
 HAMCO BLACK COUNTESS 357A

	CED	BW	WW	YW	MILK	FR	BW	WW	YW
EPD	+9.0	+0.2	+57	+101	+27	5.1	80	644	1132
ADG	3.03-94		WDA 2.97-90		CE ***	WT 1000		SCR 33.5cm	

- * 227L is a moderate framed, wide bodied, thick made bull with good length & muscle.
- * Countess 59H is a Stunner daughter out of a Unanimous cow, so great maternal genetics.
- * A lot of very good bulls up close in this bull's pedigree.
- * Good EPDs CED, BW-top 15%, WW, YW, Milk-top 35% or better.
- * Recommended for heifers

Lot 146**HAMCO SPECIAL 229L**

DSH 229L 2336082 March 3, 2023

BALDRIDGE 38 SPECIAL
TOPP 38 SPECIAL 1016
 TOPP RUBY 5307

BROOKING JASPER 6124
HAMCO LASSIE 172H
 HAMCO LASSIE 54E

EF COMMANDO 1366
 BALDRIDGE ISABEL Y69
 MOHNEN WOLF CREEK 1871
 TC RUBY 3708
 BROOKING BANK NOTE 4060
 BRUSETT CLOVA PRIDE Y136
 SANDPOINT J EDGAR HOOVER
 HAMCO LASSIE 99C

	CED	BW	WW	YW	MILK	FR	BW	WW	YW
EPD	+6.0	+1.6	+68	+115	+22	5.1	82	696	1207
ADG	2.82-88		WDA 3.18-97		CE ***	WT 1070		SCR 33.5cm	

- * Special 229L is a very good, deep, soggy made bull with extra width & muscle. He is built like a tank.
- * Dam Lassie 172H is a good Jasper daughter that did a good job raising this bull. WW 696- 104. Also has a 2 year old (329K) Lot 307 selling in this sale.
- * Good EPDs CED-top 30%, WW,YW-top 15%
- * Another bull with a lot of good bulls in the pedigree
- * Recommended for heifers



Lot 147**HAMCO REVOLVER 343L**

DSH 343L 2338227 March 11, 2023

BALDRIDGE 38 SPECIAL

TOPP 38 SPECIAL 1016

TOPP RUBY 5307

MUSGRAVE 316 STUNNER

HAMCO ERICA 45H

HAMCO ERICA 233F

EF COMMANDO 1366

BALDRIDGE ISABEL Y69

MOHNEN WOLF CREEK 1871

TC RUBY 3708

LD CAPITALIST 316

MCATL BLACKBIRD 831-1378

S A V RENOWN 3439

BLACK HAMCO ERICA 450X

	CED	BW	WW	YW	MILK	FR	BW	WW	YW
EPD	+8.0	-0.2	+59	+100	+24	5.5	79	631	1205
ADG	3.29-103		WDA 3.13-95		CE ***	WT 1025		SCR 34 cm	

* Revolver 343L is a very good, deep ribbed, showy bull with good width, muscle & a nice Angus head.

* Dam Erica 45H is a Stunner daughter out of a S A V Renown cow, so very good genetics here. One daughter retained.

* Very good EPDs CED-top 20%, BW-top 10%, WW YW-top 35%

* Recommended for heifers.

**Lot 147****Reasons to Buy a Hamco Bull!!!**

- 1) Bulls are selected from a group of 275 bulls & only the good bulls make the cut and sell.
- 2) Our herd is on the Canadian Angus Association performance program. Complete performance data is available & published—birth wt, weaning wt, yearling wt, ADG, WDA, frame score, scrotal circumference, EPD's, calving ease,
- 3) All bulls sold have passed a semen test & a Breeding Soundness examination. The bull you buy will have scored satisfactory on a Breeding Soundness examination
- 4) Bulls are developed on a high forage TMR ration for optimal development.
- 5) Bulls are quite tame, and they have lots of exposure to people as they are walked through daily & we select for good docility.
- 6) We will manage your bulls and keep developing them free of charge until April 15, 2024 and for \$3.50 day after April 15, so that you don't have to worry about your bull until you need him to breed.
- 7) We will deliver your bull to your farm or haul your own bull sale day and receive \$100.00 off each bull purchased.
- 8) Our herd & the bulls are on a strategic vaccination program. Guaranteed BVD PI free and well protected against many diseases including foot rot.
- 9) Large Genetic base—we use top AI sires, elite embryo donors, and strong herd bulls. We offer a diverse package of genetics and if you have bought bulls from us before, there are numerous unrelated bulls in the sale.
- 10) Hamco Cattle Co Bull Warranty program (see page 5 for details)

REFERENCE SIRE**4 SONS SELL****Topp Bullseye 9049**

Reg # (Cdn) 2183036

Mogck Sure Shot

G V F Forword 8110

S: Mogck Bullseye

D: TA Peggy 0641

Mogck Mary 1255

TC Peggy 4096

CAA	CED	B.W.	W.W.	Y.W.	Milk
EPD	0.0	+5.0	+77	+137	+27

* Topp Bullseye 9049 was our pick of full brothers from a very good flush at the 2020 Topp Angus Sale

* A very heavily muscled bull that is very deep sided, thick & wide bodied.

* Great EPD's WW, YW-top 3% His sire Mogck Bullseye has emerged as a great Angus sire.

* His progeny have lots of growth & are consistently very good.

**Lot 148****HAMCO BULLSEYE 232L**

DSH 232L 2336084 March 3, 2023

MOGCK BULLSEYE

TOPP BULLSEYE 9049

TC PEGGY 0641

TOPP REKNOWN 6251

HAMCO LASS 432G

HAMCO LASS 227D

MOGCK SURE SHOT

MOGCK MARY 1255

G V F FORWORD 8110

TC PEGGY 4096

S A V RENOWN 3439

S A V ABIGALE 0312

TA 6123 WOLF CREEK 3714

HAMCO LASS 20B

	CED	BW	WW	YW	MILK	FR	BW	WW	YW
EPD	+6.0	+2.3	+68	+115	+28	5.8	82	693	1274
ADG	3.53-110		WDA 3.39-103		CE **	WT 1140		SCR 34 cm	

* Bullseye 232L is a powerful, deep sided, showy bull with very good muscle & a nice Angus head.

* Dam Lass 432G is a good Reknown cow that did a good job raising this bull. WW 693lbs-104 & has a daughter retained.

* Good performance on test ADG 3.53-110 WDA 3.39-103

* Should work well on cows or well grown out heifers.

**Lot 148**

Lot 149**HAMCO BULLSEYE 182L**

DSH 182L 2330701 February 26, 2023

MOGCK BULLSEYE
TOPP BULLSEYE 9049
 TC PEGGY 0641

MOGCK SURE SHOT
 MOGCK MARY 1255
 G V F FORWARD 8110
 TC PEGGY 4096
 VIN-MAR FOCUS IN 8847
 TC BARBARA 3088
 PRAIRIELANE 7451-2014-5004
 BLACK HAMCO MISS HI FLYER 90L

TA 3088 FOCUS IN 1314

HAMCO LASS 281F

BLACK HAMCO LASS 456Y

	CED	BW	WW	YW	MILK	FR	BW	WW	YW
EPD	+4.0	+2.6	+55	+100	+26	5.7	90	625	1204
ADG	2.93-92		WDA 3.21-98		CE *		WT 1095	SCR 36 cm	

- * Bullseye 182L is a larger framed, wide bodied, deep middled, correct made bull with a wide muscular rump & a nice Angus head.
- * Dam Lass 281F is a good Focus In 1314 daughter. She has produced a son to Sigvaldson Farms & a daughter retained.
- * Balanced EPDs- all top 60% or better
- * Recommended for cows.

**Lot 149****Lot 150****HAMCO BULLSEYE 344L**

DSH 344L 2338228 March 11, 2023

MOGCK BULLSEYE
TOPP BULLSEYE 9049
 TC PEGGY 0641

MOGCK SURE SHOT
 MOGCK MARY 1255
 G V F FORWARD 8110
 TC PEGGY 4096
 DIAMOND IN THE ROUGH
 CIRCLE A FOREVER LADY 7226
 TA 4226 WINDY 2110
 PRAIRIELANE 5057 BANDOLER 8097

CIRCLE A MOGUL 3463
HAMCO BANDOLER 379F
 HAMCO BANDOLER 425C

	CED	BW	WW	YW	MILK	FR	BW	WW	YW
EPD	+5.0	+2.2	+63	+106	+25	6.0	84	661	1186
ADG	2.82-88		WDA 3.23-98		CE *		WT 1060	SCR 36.5cm	

- * Bullseye 344L is a larger framed, deep sided, correct made bull with extra length & a wide muscular rump.
- * Dam Bandoler 379F is a good Mogul daughter that has a heifer retained & did a good job raising this bull.
- * Good EPDs—all top 50% or better
- * Recommended for cows.

**Lot 150****Lot 151****HAMCO BULLSEYE 370L**

DSH 370L 2338259 March 14, 2023

MOGCK BULLSEYE
TOPP BULLSEYE 9049
 TC PEGGY 0641

MOGCK SURE SHOT
 MOGCK MARY 1255
 G V F FORWARD 8110
 TC PEGGY 4096
 DIAMOND IN THE ROUGH
 CIRCLE A FOREVER LADY 7226
 TA 5092 FOCUS IN 0635
 PRAIRIELANE MARK ROEBUD 1086

CIRCLE A MOGUL 3463
HAMCO ROSEBUD 302F
 HAMCO ROSEBUD 350C

	CED	BW	WW	YW	MILK	FR	BW	WW	YW
EPD	0.0	+4.6	+65	+113	+24	5.8	98	667	1195
ADG	3.16-99		WDA 3.26-99		CE *		WT 1060	SCR 40.5cm	

- * Bullseye 370L is a bigger, powerful bull that is correct made, deep sided & has good width & muscle.
- * Dam Rosebud 302F is a proven Mogul daughter that has produced bulls to Kemp Farms & Ronald Hooper.
- * Very good performance EPDs WW, YW-top 15%
- * Recommended for cows

**Lot 151**

Selection of a herd bull is a very important decision for your farm as your herd bull contributes 50% of your calf's genetics!!!

2 YEAR OLD RED & BLACK ANGUS BULLS

REFERENCE SIRE 1 SON SELLS

Red Messmer Packer S008

Reg # (Cdn) 1481359

Red Beckton Julian GG B571 Red VGW Top Pick 130
 S: Red Messmer Joshua 019P D: Red Messmer Millie 124P
 Re Messmer Pandora M186 Red Messmer Millie 9416

CAA	CED	B.W.	W.W.	Y.W.	Milk
EPD	+7.0	-0.9	+50	+87	+23

- * Messmer Packer S008 is a proven AI sire that sired a lot of good ones.
- * Packer S008 sires offspring with excellent muscle shape & thickness.
- * He worked very well in our herd.
- * His semen has been unavailable for a number of years & very expensive .



Lot 201

RED HAMCO PACKER 90K

DSH 90K 2291882 February 6, 2022 (ET) (AI)

RED MESSMER JOSHUA 019P RED BECKTON JULIAN GG B571
RED MESSMER PACKER S008 RED MESSMER PANDORA M186
 RED MESSMER MILLIE 124P RED VGW TOP PICK 130
 RED SSS EQUAL 508N RED MESSMER MILLIE 9416
RED HAMCO MIMI 520W RED SVR COMMANDER 47L
 RED HAMCO MIMI INDEED 98R RED SSS LARBABA 730F
 RED TOWAW INDEED 104H(ELITE)
 RED HAMCO MIMI HIGH MARK 27K(ELITE)

	CED	BW	WW	YW	MILK	FR	BW	WW	YW
EPD	+4.5	-1.3	+42	+59	+30	5.5	71	607	1097
ADG	2.95-82		WDA 2.90-88		CE **	WT 1705		SCR 38 cm	

- * Packer 90K is a dark red, thick made, well muscled, smooth made bull with a good rump. He is a full brother to the best Red Angus we have bred at Hamco- Red Hamco Packer 133Y. We are using a full brother in our purebred herd.
- * Dam Mimi 520W was an impressive standout picture perfect cow that was in our herd for 12 years & has 23 offspring registered. She had perfect feet her whole life & we flushed her later in her life.
- * This bull has matured into a good bull, the daughters will be keepers.
- * Recommended for cows or well grown out heifers.



Lot 201

REFERENCE SIRE 1 SON SELLS

Red 9 Mile Franchise 6305

Reg # (Cdn) 2017139

Spur Franchise 7070 Red TR Colt 45 UT806
 S: Spur Franchise of Garton D: Red C-Bar Abigrace Y11
 H&H Irene Lass 0135 Red C-Bar & Brown Abigrace

CAA	CED	B.W.	W.W.	Y.W.	Milk
EPD	+10.0	-2.4	+42	+85	+39

- * A calving ease sire who excels for phenotype & carcass merit.
- * His phenotype is very impressive with extra muscle shape & eye appeal.
- * He offers an outcross pedigree to many of today's popular pedigrees
- * Top 2% CBI (Canadian Balanced Index)



Lot 202

RED HAMCO FRANCHISE 31K

AGH 31K 2276335 January 27, 2022 (AI)

SPUR FRANCHISE OF GARTON SPUR FRANCHISE 7070
RED 9 MILE FRANCHISE 6305 H&H IRENE LASS 0135
 RED C-BAR ABIGRACE Y11 RED TR COLT 45 UT806
 RED BROWN JYJ REDEMPTION RED C-BAR & BROWN ABIGRACET714
RED HAMCO ALEXANDRIA 161H RED JENSEN SKY 611X
 RED HAMCO ALEXANDRIA 43A(ELITE) RED IVOMA BARON BEAUTY 10P
 RED MESSMER PACKER S008
 RED HAMCO ALEXANDRIA 286Y

	CED	BW	WW	YW	MILK	FR	BW	WW	YW
EPD	+12	-3.6	+46	+92	+31	5.0	61	665	1210
ADG	3.88-107		WDA 2.98-91		CE ***	WT 1620		SCR 39.5 cm	

- * Franchise 31K is a medium red, deep middled, well muscled bull with desirable muscle shape & a straight top line.
- * Dam Alexandria 161H is a well bred Redemption daughter out of a Packer S008 cow
- * Good performance on test ADG 3.88-107
- * Very good EPDs CED, BW- top 3%, WW- top 35%, YW- top 10%, Milk- top 4%
- * Highly recommended for heifers.



Lot 202

REFERENCE SIRE 2 SONS SELL

Red JAS Grand 15G

Reg # (Cdn) 2095200

Red Pie Specialist 430
S: Red Cockburn Assassin 624D D: Red JAS Jessica 180E
Red Cockburn Cora 254Z Red JAS Jessica 47C

CAA	CED	B.W.	W.W.	Y.W.	Milk
EPD	+2.0	+0.7	+55	+84	+30

- * Grand 15G was our pick from the 2020 JAS sale.
- * He has produced some very good offspring.
- * His calves are easy fleshing & made the right way.
- * Reasonable calving ease & good performance.
- * An outcross sire for our program.



Lot 203

RED HAMCO GRAND 444K

AGH 444K 2285326 March 16, 2022

RED COCKBURN ASSASSIN 624D RED PIE SPECIALIST 430
RED JAS GRAND 15G RED COCKBURN CORA 254Z
RED JAS JESSICA 180E RED FRASER ANSWER 459B
RED BROWN JYJ REDEMPTION Y1334 RED JAS JESSICA 47C
RED HAMCO ALEXANDRIA 201F RED BECKTON NEBULA P P707
RED HAMCO ALEXANDRIA 43A(ELITE) RED JYJ MS JOLENE W16
RED MESSMER PACKER S008
RED HAMCO ALEXANDRIA 286Y

	CED	BW	WW	YW	MILK	FR	BW	WW	YW
EPD	+1.0	+1.7	+72	+124	+26	7.0	93	819	1440
ADG	4.10-113		WDA 3.90-119	CE *	WT 1830	SCR 42.5 cm			

- *Grand 444K is a dark red, quiet, larger framed, powerful, well muscled bull.
- * Dam Alexandria 201F is a valuable cow as this bull had the highest adjusted WW at 819 lbs -122. She also has a bull to EUR Ranch & 2 daughters retained.
- * Very good performance on test ADG 4.10-113 WDA 3.60-119
- * Very good performance EPDs WW, YW-top 1%
- * This bull was a standout yearling bull that would have sold very well as a yearling but he was pulled from the sale due to a cut penis. He was held back to sell as a featured 2 year old. He has developed in to a very impressive bull.
- * Recommended for cows.



Lot 203

Lot 204

RED HAMCO GRAND 567K

DSH 567K 2287406 March 15, 2022

RED COCKBURN ASSASSIN 624D RED PIE SPECIALIST 430
RED JAS GRAND 15G RED COCKBURN CORA 254Z
RED JAS JESSICA 180E RED FRASER ANSWER 459B
RED BRYLOR WEST JET 69W RED JAS JESSICA 47C
RED HAMCO MIMI 124B RED FLYING K AMBUSH 6T
RED HAMCO MIMI 76S RED FLYING K LASSIE 3T
RED TOWAW INDEED 104H
RED HAMCO MIMI HIGH MARK 27K(ELITE)

	CED	BW	WW	YW	MILK	FR	BW	WW	YW
EPD	-4.0	+3.1	+49	+72	+25	6.4	94	677	1174
ADG	3.10-86		WDA 3.26-99	CE *	WT 1695	SCR 44 cm			

- *Grand 567K is a medium red, large framed powerful bull with extra length, width, & thickness.
- * Dam Mimi 124B is a top donor cow in our herd. She has produced 11 bulls & 7 females including a Tycoon son that was retained & used as a herd sire in our herd this past breeding season. We expect great things from him.
- * She is being flushed this winter & have more embryos to implant this spring.
- * She consistently produces top end calves.
- * Recommended for cows.



Lot 204



REFERENCE SIRE 1 SON SELLS

Red SSS Maximus 775A

Reg # (Cdn) 1756999

Red ML Max 862U Red Brylor Big Rock 85T
S: Red Flying K Max 159Y D: Red SSS Maxzeen 646X
Red Flying K Anita 764T Red SSS Maxzeen 667P

CAA CED B.W. W.W. Y.W. Milk
EPD +8.0 +0.4 +34 +39 +17

- * Maximus 775A was our choice of the heifer bulls from the 2014 Triple S sale.
- * He is an impressive individual that is made the right way with a very desirable muscle pattern. He has developed into a top end bull.
- * He stamps his calves out very consistently—moderate framed, thick made with extra muscle & very correct made. Daughters are producing well in our herd.



Lot 205

RED HAMCO MAXIMUS 317K

DSH 317K 2282533 March 3, 2022

RED FLYING K MAX 159Y RED ML MAX 862U
RED SSS MAXIMUS 775A RED FLYING K ANITA 764T
RED SSS MAXZEEN 646X RED SSS MAXZEEN 667P
RED LWNBRG HARVESTOR 103C TED HARVESTOR 154A
RED HAMCO REBA 28F RED LWNBRG CADENCE 141Y
RED HAMCO REBA 322D RED WRAZ BUCC 5X
RED HAMCO REBA 94X

	CED	BW	WW	YW	MILK	FR	BW	WW	YW
EPD	+10	-1.2	+33	+51	+16	5.0	68	582	1090
ADG	3.33-92		WDA 2.89-88	CE ***	WT 1520		SCR 43.5 cm		

- * Maximus 317K is a dark red, correct made, well muscled bull.
- * Dam Reba 28F is a Harvestor 103C daughter so good maternal genetics in this bull's pedigree. Has a heifer retained.
- * Very good calving ease EPDs CED, BW— top 10%
- * Highly recommended for heifers.



Lot 205

REFERENCE SIRE (see page 14)

RED SSS RASCAL 75H 1 SON SELLS

Lot 206

RED HAMCO RASCAL 423K

DSH 423K 2285156 March 13, 2022

RED SSS GRIT 503F RED SSS CONTENDER 121B
RED SSS RASCAL 75H RED SSS SCAARA 382Z
RED SSS BLOCKANNA 164Y RED SSS SOLDIER 365W
RED SSS MAXIMUS 775A RED SSS BLOCKANNA 412W
RED HAMCO BAYBERRY 182G RED FLYING K MAX 159Y
RED HAMCO BAYBERRY 263D RED SSS MAXZEEN 646X
RED T-K SAGA 81B
RED HAMCO BAYBERRY 61A

	CED	BW	WW	YW	MILK	FR	BW	WW	YW
EPD	+7.0	-0.3	+39	+62	+25	5.1	76	657	1112
ADG	3.48-96		WDA 2.95-90	CE ***	WT 1450		SCR 40.5 cm		

- * Rascal 423K is a dark red, correct made, well muscled bull with very good feet & a desirable Angus head.
- * Dam Bayberry 182G is a daughter out of our great cow maker bull Maximus 775A & has produced a son to Edwin Henderson & a daughter retained.
- * Very good calving ease CED, BW— top 20%
- * Recommended for heifers.



Lot 206



REFERENCE SIRE

5 SONS SELL

Red Fraser Packer 887F

Reg # (Cdn) 2062773

Red Messmer Packer S008 Leachman Saugahatchee 3000C
S: Red Wilbar Packer 383B D: Fraser Ramba 103Y
Red Head Cora 159L Red Shoderee Ramba 2F

CAA	CED	B.W.	W.W.	Y.W.	Milk
EPD	+6.0	+0.7	+44	+52	+23

- * Packer 887F was our pick from Jeff Fraser bull sale in 2019.
- * He is phenotypically very impressive—correct made, good muscle shape, deep ribbed with good width & thickness.
- * CED— top 15%. Has calved well for us & has produced good cows & bulls.



Lot 207

RED HAMCO PACKER 459K

DSH 459K 2285331 March 18, 2022

RED WILBAR PACKER 383B RED MESSMER PACKER S008
RED FRASER PACKER 887F RED HEAD CORA 159L
FRASER RAMBA 103Y LEACHMAN SAUGAHATCHEE 3000C
RED SODEREE RAMBA 2F
RED WILDMAN XEMPT 422B RED JENSEN SKY 611X
RED HAMCO TIARA 267D RED IVOMA BARON BEAUTY 10P
RED HAMCO TIARA 116A RED BRYLOR NEW TREND 22D(ELITE)
RED HAMCO TIARA 382T

	CED	BW	WW	YW	MILK	FR	BW	WW	YW
EPD	-1.0	+3.0	+38	+57	+26	6.0	96	695	1153
ADG 3.33-92			WDA 3.19-97	CE *	WT 1570	SCR 42 cm			

- * Packer 459K is a very good dark red, thick made, correct bull with good depth & good feet.
- * Dam Tiara 267D is a Xempt daughter out of a New Trend cow so great maternal genetics. Has produced a full brother to Agri B Farms & 2 daughters retained.
- * Recommended for cows.



Lot 207

Lot 208

RED HAMCO PACKER 481K

DSH 481K 2287313 March 20, 2022

RED WILBAR PACKER 383B RED MESSMER PACKER S008
RED FRASER PACKER 887F RED HEAD CORA 159L
FRASER RAMBA 103Y LEACHMAN SAUGAHATCHEE 3000C
RED U2 MISSION IMPOSSIBLE 150W RED LJC MISSION STATEMENT P27
RED HAMCO GOLD EDGE 322B RED U-2 ANEXA 09E
RED GOLD EDGE OF KINARED 13X RED BRYLOR PHOENIX 16K
RED SCTC GOLD EDGE 2E

	CED	BW	WW	YW	MILK	FR	BW	WW	YW
EPD	0.0	+3.0	+44	+73	+22	6.0	92	679	1258
ADG 3.78-105			WDA 3.43-104	CE *	WT 1675	SCR 40.5 cm			

- * Packer 481K is a dark red, well muscled, deep sided, wide rumped bull with a nice Angus head.
- * Dam Gold Edge 322B is a very good Mission Impossible cow that has produced sons to A&M Hildebrand, Ken Petrick, Bob McKnight & a daughter retained.
- * Good performance on test.
- * Recommended for cows.



Lot 208

Lot 209

RED HAMCO PACKER 524K

DSH 524K 2287353 March 26, 2022

RED WILBAR PACKER 383B RED MESSMER PACKER S008
RED FRASER PACKER 887F RED HEAD CORA 159L
FRASER RAMBA 103Y LEACHMAN SAUGAHATCHEE 3000C
RED SODEREE RAMBA 2F
RED TOWAW ZEPPELIN 578B RED WINDY HILL ZEPPELIN 1240Z
RED HAMCO PRILARK 464F RED TOWAW STAR 116T
RED HAMCO PRILARK 231D RED LSF CONQUEROR 0026X
RED HAMCO PRILARK 291Z

	CED	BW	WW	YW	MILK	FR	BW	WW	YW
EPD	+4.0	+1.3	+40	+56	+26	6.4	90	735	1199
ADG 3.34-92			WDA 3.29-100	CE *	WT 1640	SCR 39 cm			

- * Packer 524K is a dark red, larger framed bull with extra length & well muscled.
- * Dam Prilark 464F did a good job raising this bull WW 735 lbs— 108 & has produced a son to Richard Unrau.
- * Recommended for cows.



Lot 209

Lot 210 **RED HAMCO PACKER 552K**

DSH 552K 2287386 April 4, 2022

RED WILBAR PACKER 383B
RED FRASER PACKER 887F
FRASER RAMBA 103YRED LAZY MC CC DETOUR 2W
RED HAMCO CARMELLA 210E
RED HAMCO CARMELLA 148ARED MESSMER PACKER S008
RED HEAD CORA 159L
LEACHMAN SAUGAHATCHEE 3000C
RED SODEREE RAMBA 2F
RED RMJ REDMAN 1T
RED LAZY MC BESS 12S
RED BIEBER ROUGH RIDER 10712
RED LEADHAM CARMELLA 22H(ELITE)

	CED	BW	WW	YW	MILK	FR	BW	WW	YW
EPD	+10	-1.1	+30	+45	+23	5.2	77	645	1097
ADG	3.48-96		WDA 3.04-92		CE ***	WT 1520		SCR 39.5 cm	

- * Packer 522K is another dark red, correct made, straight topped bull with extra length & a nice Angus head.
- * Dam Carmella 210E is a good Detour daughter our of an ET Rough Rider cow that has produced a bull to Ken Miller.
- * Good calving ease CED, BW- top 10%
- * Recommended for heifers

**Lot 210****Lot 211** **RED HAMCO PACKER 541K**

DSH 541K 2287373 March 30, 2022

RED WILBAR PACKER 383B
RED FRASER PACKER 887F
FRASER RAMBA 103YRED ANDRAS NEW DIRECTION R240
RED HAMCO CARMELLA 160F
RED HAMCO CARMELLA 113YRED MESSMER PACKER S008
RED HEAD CORA 159L
LEACHMAN SAUGAHATCHEE 3000C
RED SODEREE RAMBA 2F
ANDRAS IN FOCUS B152
ANDRAS KURUBA B111
RED BIEBER ROUGH RIDER 10712
RED LEADHAM CARMELLA 22H(ELITE)

	CED	BW	WW	YW	MILK	FR	BW	WW	YW
EPD	+3.0	+2.3	+47	+84	+26	6.4	89	723	1331
ADG	4.65-129		WDA 3.60-109		CE **	WT 1670		SCR 40 cm	

- * Packer 541K is a dark red, larger framed, correct made bull with good length.
- * Dam Carmella 160F is a New Direction daughter that did a good job raising this bull. WW 723 lbs- 106 & a daughter retained.
- * Very good performance on test. Balanced EPDs.
- * Should work well on cows or well grown out heifers.

**Lot 211****REFERENCE SIRE** (see page 9)**RED TOWAW JULIAN 545F 1 SON SELLS****Lot 212** **RED HAMCO JULIAN 234K**

DSH 234K 2281126 February 24, 2022

RED FLYING K JULIAN 72Y
RED TOWAW JULIAN 545F
RED TOWAW MINIATA 110YRED TOWAW KINGMAN 467B
RED HAMCO SUSIE 395G
RED HAMCO SUSIE 67DRED TONGUERIVER JUBILATION
RED FLYING K TAMMY 15W
RED SHODEREE LANCER 133P
RED TOWAW MINIATA 218J
RED TOWAW KINGMAN 157Z
RED TOWAW SYBIL 127Z
RED BIEBER MAKIN HAY 9913
RED HAMCO SUSIE 527R

	CED	BW	WW	YW	MILK	FR	BW	WW	YW
EPD	-8.0	+6.0	+55	+93	+32	5.9	105	702	1182
ADG	3.4-90		WDA 3.12-95		CE *	WT 1715		SCR 41 cm	

- * Julian 234K is a dark red, correct made, deep middled, well muscled bull with a nice Angus head.
- * Dam Susie 395G is a proven Kingman daughter with a son to Brian Yablonski & a daughter retained.
- * Very good performance EPDs WW, YW, Milk- top 10% or better
- * Recommended for cows. He will calve fine when used on cows.

**Lot 212**

REFERENCE SIRE (see page 18)

RED HAMCO NEXUS 74G 2 SONS SELL

Lot 213

RED HAMCO NEXUS 510K

DSH 510K 2292321 March 24, 2022

RED SILVEIRAS MISSION NEXUS
RED HAMCO NEXUS 74G
RED CUDLOBE BONNIE 181X

RED SSS MAXIMUS 775A
RED HAMCO DIVA 273D
RED HAMCO DIVA 287B

RED LJC MISSION STATEMENT P27
RED SILVEIRAS DAORV 8399
STEVENSON RAINMAKER 630G
CUDLOBE BONNIE 19L
RED FLYING K MAX 159Y
RED SSS MAXZEEN 646X
RED SSS ZAMA PINE 90U
RED HAMCO DIVA 45U

	CED	BW	WW	YW	MILK	FR	BW	WW	YW
EPD	-7.0	+5.9	+56	+93	+28	6.3	105	711	1264
ADG	4.20-116		WDA 3.47-105		CE *	WT 1640		SCR 42 cm	

- * Hamco Nexus 510K is a dark red, deep sided bull with good length & very good feet.
- * Dam Diva 273D is a proven Maximus cow that has produced a bull to Mark Braun & 2 retained daughters.
- * Good performance on test ADG 4.20-116
- * Recommended for cows. He will calve fine if used on cows.



Lot 213

Lot 214

RED HAMCO NEXUS 558K

DSH 558K 2297393 April 9, 2022

RED SILVEIRAS MISSION NEXUS
RED HAMCO NEXUS 74G
RED CUDLOBE BONNIE 181X

RED CHOPPER K TOP DESIGN 64R
RED HAMCO PRILARK 438Y
RED HAMCO PRILARK 365W

RED LJC MISSION STATEMENT P27
RED SILVEIRAS DAORV 8399
STEVENSON RAINMAKER 630G
CUDLOBE BONNIE 19L
RED LCHMN TOP BRASS 1049H
RED SSS SOAPY 607K
RED HAMCO MR SOL TREND 96L
RED LRH 154G MISS CLASSIC 112K

	CED	BW	WW	YW	MILK	FR	BW	WW	YW
EPD	-2.0	+3.2	+38	+67	+27	5.8	92	679	1131
ADG	3.23-89		WDA 3.07-93		CE *	WT 1620		SCR 40.5 cm	

- * Nexus 558K is a dark red, correct made bull with desirable length & a wide muscular rump.
- * Dam Prilark is a value, proven cow with sons to Werner Klassen, Michael Gosseye & EUR Ranches
- * Recommended for cows



Lot 214

REFERENCE SIRE 4 SONS SELL

Red Wildman Xempt 422B

Reg # (Cdn) 1804845

Red Jensen Cactus Sky 25S Red Lchmn Grnd Canyon 1244G*osc
S: Red Jensen Sky 611X D: Red Ivoma Baron Beauty 10P
Red That'll Do Rebello 5M Red Ivoma Soapy 17K

CAA	CED	B.W.	W.W.	Y.W.	Milk
EPD	0.0	+2.0	+25	+47	+26

- * Wildman Xempt 422B was a bull we bought from Brett Wildman's good herd.
- * His sire Jensen Sky 611X & his dam Ivoma 10P are both very good footed & this bull's feet are near perfect.
- * He has developed into an impressive bull & left us many good sons & daughters with very good feet.
- * At 9 years of age, he was still working & had near perfect feet.



Lot 215

RED HAMCO XEMPT 212K

DSH 212K 2281108 February 22, 2022

RED JENSEN SKY 611X
RED WILDMAN XEMPT 422B
RED IVOMA BARON BEAUTY 10P
1244G

RED CCC TOWAW EXCEL 34Z
RED HAMCO PRILARK 156C
RED LRH 154G MISS CLASSIC 112K

RED JENSEN CACTUS SKY 25S
RED THAT'LL DO REBELLO 5M
RED LCHMN GRND CANYON

RED TOWAW LAKOTA 241R(ELITE)
RED GLESBAR EXCEL 73W
RED TOWAW FAYETTE 9W
RED BIEBER CLASSIC 6753

	CED	BW	WW	YW	MILK	FR	BW	WW	YW
EPD	-1.0	+2.6	+37	+62	+28	6.4	96	707	1206
ADG	3.31-92		WDA 3.30-100		CE *	WT 1710		SCR 43 cm	

- * Xempt 212K is a very good, bigger, wide bodied, correct made bull with good muscle & very good feet.
- * Dam Prilark 156C is an Excel 34Z proven daughter with a son to Abe Driedger & a bull selling as a yearling in this sale (Lot 20) Great maternal genetics.
- * Recommended for cows.



Lot 215

Lot 216**RED HAMCO XEMPT 267K**

DSH 267K 2281197 February 27, 2022

RED JENSEN SKY 611X
RED WILDMAN XEMPT 422B
 RED IVOMA BARON BEAUTY 10P

RED HAMCO PACKER 133Y
RED HAMCO INDIGO 203F(ELITE)
 RED HAMCO INDIGO 402B

RED JENSEN CACTUS SKY 25S
 RED THAT'LL DO REBELLO 5M
 RED LCHMN GRND CANYON 1244G
 RED TOWAW LAKOTA 241R(ELITE)
 RED MESSMER PACKER S008
 RED HAMCO MIMI 520W
 RED HAMCO IDEAL 227T
 RED INDIGO OF KINARED 17X

	CED	BW	WW	YW	MILK	FR	BW	WW	YW
EPD	-1.0	+2.4	+30	+48	+33	5.7	91	632	1072
ADG	3.26-90		WDA 3.12-95		CE *	WT 1640		SCR 40.5cm	

- * Xempt 267K is a dark red, good footed bull with desirable width & muscle.
- * Dam Indigo 203F is a CAA Elite daughter of the great Packer 133Y bull. She has a yearling in this sale (Lot 13) & sons to Barry McNabb & Bridgen Bros.
- * Very good maternal genetics in this pedigree. Daughters will be keepers.
- * Recommended for cows.

**Lot 216****Lot 217****RED HAMCO XEMPT 270K**

DSH 270K 2281199 February 28, 2022

RED JENSEN SKY 611X
RED WILDMAN XEMPT 422B
 RED IVOMA BARON BEAUTY 10P

RED TOWAW KINGMAN 467B
RED HAMCO SALLEE 450F
 RED HAMCO SALLEE 18C

RED JENSEN CACTUS SKY 25S
 RED THAT'LL DO REBELLO 5M
 RED LCHMN GRND CANYON 1244G
 RED TOWAW LAKOTA 241R(ELITE)
 RED TOWAW KINGMAN 157Z
 RED TOWAW SYBIL 127Z
 RED BRYLOR RED KODIAK 3A
 RED HAMCO SALLEE 308A

	CED	BW	WW	YW	MILK	FR	BW	WW	YW
EPD	+4.0	+0.2	+26	+41	+32	5.0	81	622	1061
ADG	3.23-90		WDA 3.00-91		CE *	WT 1695		SCR 38.5 cm	

- * Xempt 270K is a very good, dark red, wide bodied bull with extra width, muscle, & lots of hair.
- * Dam Sallee 450F is a proven daughter of Kingman with a son to Scott Mannle & a daughter retained.
- * Recommended for cows.

**Lot 217****Lot 218****RED HAMCO XEMPT 382K**

DSH 382K 2282589 February 28, 2022

RED JENSEN SKY 611X
RED WILDMAN XEMPT 422B
 RED IVOMA BARON BEAUTY 10P

RED HAMCO PACKER 133Y
RED HAMCO PACKER 86F
 RED HAMCO SALLEE 397D

RED JENSEN CACTUS SKY 25S
 RED THAT'LL DO REBELLO 5M
 RED LCHMN GRND CANYON 1244G
 RED TOWAW LAKOTA 241R(ELITE)
 RED MESSMER PACKER S008
 RED HAMCO MIMI 520W
 RED T-K FEDERAL 13Y
 RED HAMCO SALLEE 127Z

	CED	BW	WW	YW	MILK	FR	BW	WW	YW
EPD	-2.0	+3.0	+54	+86	+30	5.3	96	768	1305
ADG	3.83-106		WDA 3.54-108		CE *	WT 1775		SCR 42 cm	

- * Xempt 382K is a dark red, deep middled, powerful bull with extra length, a wide muscular rump with a desirable Angus head.
- * Dam Packer 86F is a proven Packer 133Y daughter that did a good job raising this bull. WW 768 lbs- 113 She has 2 daughters retained in the herd.
- * Good performance EPDs WW, YW, Milk- top 20% or better
- * Recommended for cows.

REFERENCE SIRE (see page 23)**RED SVR ZIP 181G 2 SONS SELL****Lot 219****RED HAMCO ZIP 309K**

DSH 309K 2282519 March 2, 2022

RED SVR ATTACK 200D
RED SVR ZIP 181G
 RED SVR COLLEEN 103C

RED BROWN BETTER ANSWER Z7257
RED HAMCO SUSIE 46D
 RED HAMCO SUSIE 427B

RED U-2 MAMA'S BOY 201B
 RED SVR FANCY BLADY 83W
 RED T-K BAILOUT 1Z
 RED SVR COLLEEN 30U
 LCS X2
 RED BROWN MS MONU P7930
 RED HAMCO FRANCHISE 122R
 RED HAMCO SUSIE 166W

	CED	BW	WW	YW	MILK	FR	BW	WW	YW
EPD	+9.0	-1.7	+33	+56	+21	5.6	74	621	1101
ADG	3.26-90		WDA 3.00-91		CE **	WT 1710		SCR 42 cm	

- * Zip 309K is a dark red wide bodied, thick bull with very good muscle shape & a nice Angus head.
- * Good calving ease genetics on the bottom side of this pedigree.
- * Good calving ease EPDs CED, BW-top 15%
- * Recommended for cows or well grown out heifers.

**Lot 219**

Lot 220**RED HAMCO ZIP 430K**

DSH 430K 2285160 March 14, 2022

RED SVR ATTACK 200D

RED SVR ZIP 181G

RED SVR COLLEEN 103C

RED TOWAW FRANCHISE 122R

RED HAMCO TINKER 374A

RED HAMCO TINKER 11U

RED U-2 MAMA'S BOY 201B

RED SVR FANCY BLADY 83W

RED T-K BAILOUT 1Z

RED SVR COLLEEN 30U

RED LMAN ROBIN HOOD 1174B

RED HAMCO INDIGO DIVIDE 408H

RED MLK CRK CUB 722

RED HAMCO TINKER 100S

	CED	BW	WW	YW	MILK	FR	BW	WW	YW
EPD	-5.0	+3.4	+40	+73	+25	5.9	96	661	1196
ADG	3.56-99		WDA 3.26-99		CE *	WT 1690	SCR	40 cm	

* Zip 430K is a dark red, wide bodied, well muscled, thick bull with a wide deep rump like his sire.

* Dam Tinker 374A is a proven cow with a son to Trevor Mowat & a heifer retained

* Recommended for cows.

**Lot 220****REFERENCE SIRE (see page 27)****HAMCO RAPTOR 3F 3 SONS SELL****Lot 301****HAMCO RAPTOR 183K**

DSH 183K 2281065 February 20, 2022

QUAKER HILL RAMPAGE 0A36

HAMCO RAPTOR 3F

TOPP PEGGY 6055

BROOKING JASPER 6124

HAMCO LASS 197G

HAMCO LASS 81D

MCC DAYBREAK

QHF BLACKCAP 6E2 OF4V16 4355

CONNEALY CAPITALIST 028

TC PEGGY 5092

BROOKING BANK NOTE 4040

BRUSETT CLOVA PRIDE Y136

S TITLEST 1145

HAMCO LASS 72B

	CED	BW	WW	YW	MILK	FR	BW	WW	YW
EPD	+4.0	+3.2	+76	+134	+20	6.6	92	692	1368
ADG	4.39-110		WDA 3.51-102		CE *	WT 1845	SCR	43 cm	

* WOW!! Raptor 183K is a showy, typical Raptor son—deep sided, correct made with extra thickness, length, frame & an ideal Angus head.

* Dam Lass 197G is a well bred Jasper daughter with a retained daughter in the herd.

* Very good performance EPDs WW, YW-top 3% CED-top 50%

* ADG 4.39-110 WDA 3.51-102

* Recommended for cows.

**Lot 301****Lot 302****HAMCO RAPTOR 320K**

DSH 320K 2282537 March 3, 2022

QUAKER HILL RAMPAGE 0A36

HAMCO RAPTOR 3F

TOPP PEGGY 6055

BROOKING JASPER 6124

HAMCO COUNTESS 156G

HAMCO COUNTESS 359D

MCC DAYBREAK

QHF BLACKCAP 6E2 OF4V16 4355

CONNEALY CAPITALIST 028

TC PEGGY 5092

BROOKING BANK NOTE 4040

BRUSETT CLOVA PRIDE Y136

TA 4226 WINDY 2110

HAMCO BLACK COUNTESS 357A

	CED	BW	WW	YW	MILK	FR	BW	WW	YW
EPD	+6.0	+2.4	+83	+139	+24	6.8	85	808	1476
ADG	4.56-114		WDA 3.89-114		CE *	WT 1900	SCR	41.5 cm	

*WOW!! Raptor 320K is a tank of a bull with desirable depth of body, width & a lot of muscle shape & a nice Angus head.

* Dam Countess 156G did a great job raising this bull WW 808-121

* Very good performance on test ADG 4.56-114, WDA 3.89-114

* Very good EPDs WW, YW-top 1% & yet moderate CE CED-top 40%

* Use this bull on cows & you will add a lot of pounds to your calves at weaning.

* Lots of performance—11 month old bull weighing 1335 lbs & 1900 lbs as 2 year old.

* These Raptors have a lot of grow in them.

* Recommended for cows.

**Lot 302**

Lot 303**HAMCO RAPTOR 224K**

DSH 224K 2281117 February 23, 2022

QUAKER HILL RAMPAGE 0A36

HAMCO RAPTOR 3F

TOPP PEGGY 6055

COLEMAN CHARLO 0256

HAMCO LASS 12G

HAMCO LASS 183E

MCC DAYBREAK

QHF BLACKCAP 6E2 OF4V16 4355

CONNEALY CAPITALIST 028

TC PEGGY 5092

O C C PAXTON 730P

BOHI ABIGALE 6014

TOPP 6123 CAPITALIST 4294

HAMCO LASS 274C

	CED	BW	WW	YW	MILK	FR	BW	WW	YW
EPD	+8.0	+1.9	+79	+138	+23	5.4	85	747	1384
ADG	3.78-95		WDA 3.61-105		CE ***	WT 1760		SCR 40 cm	

* Raptor 224K is another typical Raptor son—very correct made, desirable muscle shape, width of body & a desirable Angus head.

* Dam Lass 12G is a daughter of the breed great Charlo 0256 & she did a great job on this calf WW 747lbs- 111. A full sister is retained.

* Very good EPDs CE-top 15%, BW-top 45%, WW YW-top 2%

* Recommended for heifers. Another calving ease bull with great performance.

**Lot 303****REFERENCE SIRE 2 SONS SELL****SAV Rainfall 6846**

Reg # (Cdn) 2013656

OCC Paxton 730P

S: Coleman Charlo 0256

Bohi Abigale 6014

SAV 8180 Traveler 004

D: SAV Blackcap May 4136

SAV May 2397

CAA	CED	B.W.	W.W.	Y.W.	Milk
EPD	+7.0	+0.4	+56	+109	+26

* Rainfall sires added length, soundness & herd bull presence in his sons.

* His daughters are stunning in an elegant maternal package. Sires good feet & legs

* He brings calving ease, maternal strength and performance in one package.

* Clearly one of the best Angus bulls in the breed at this time. Semen is no longer available

* He is a full brother to SAV President, SAV Rainmaker, & SAV Reign

**Lot 304****HAMCO RAINFALL 74K**

DSH 74K 2276687 February 2, 2022 (AI)

COLEMAN CHARLO 0256

S A V RAINFALL 6846

S A V BLACKCAP MAY 4136

O C C PAXTON 730P

BOHI ABIGALE 6014

S A V 8180 TRAVELER 004

S A V MAY 2397

HAMCO RAPTOR 3F

HAMCO LASS 67H

HAMCO LASS 447F

QUAKER HILL RAPAGE 0A36

TOPP PEGGY 6055

TA 3088 FOCUS IN 1314

HAMCO LASS 122B

	CED	BW	WW	YW	MILK	FR	BW	WW	YW
EPD	+11	-0.9	+43	+91	+21	5.0	69	526	1084
ADG	3.33-83		WDA 2.53-73		CE ***	WT 1495		SCR 38cm	

* Rainfall 74K is a smaller framed, densely made, well muscled bull with a desirable Angus head.

* Dam Lass 67H is a well bred Raptor daughter out of a Focus In 1314 cow. This bull has great calving ease genetics.

* Very good calving ease EPDs CED, BW- top 6%

* Highly recommended for heifers

**Lot 304****Lot 305****HAMCO RAINFALL 134K**

DSH 134K 2278398 February 13, 2022 (AI)

COLEMAN CHARLO 0256

S A V RAINFALL 6846

S A V BLACKCAP MAY 4136

O C C PAXTON 730P

BOHI ABIGALE 6014

S A V 8180 TRAVELER 004

S A V MAY 2397

TA 3088 FOCUS IN 1314

HAMCO ESTELLE 355F

PRAIRIELANE 7093 ESTELLE 1084(ELITE)

VIN-MAR FOCUS IN 8847

TC BABARA 3088

PRAIRIELANE OBJECTIVE 7093

PRAIRIELANE 6018 ESELLE

	CED	BW	WW	YW	MILK	FR	BW	WW	YW
EPD	+6.0	+0.8	+52	+105	+26	5.5	80	654	1307
ADG	4.25-107		WDA 3.40-98		CE ***	WT 1590		SCR 39 cm	

* Rainfall 134K is another typical Rainfall son—deep middled, thick, well muscled with an ideal Angus head.

* Dam Estelle 355F has some very good sires in her pedigree & has produced a son to Tri Bar Ranching.

* Very good performance on test ADG 4.25-107

* Recommended for heifers.

**Lot 305**

REFERENCE SIRE (see page 36)

TOPP DONALD 8061 2 SONS SELL

Lot 306

HAMCO DONALD 204K

DSH 204K 2281081 February 21, 2022

SVA THE DONALD 4030
TOPP DONALD 8061
 TA FOREVER 3738

SITZ INVESTMENT 660Z
 SVA EILEEN 9051
 MOHNEN WOLF CREEK 1871
 TC FOREVER 6123
 S A V RENOWN 3439
 S A V ABIGALE 0312
 S WHITLOCK 179
 HAMCO COUNTESS 3C

	CED	BW	WW	YW	MILK	FR	BW	WW	YW
EPD	+13	-0.4	+53	+109	+25	6.3	74	588	1264
ADG	4.41-111		WDA 3.06-89		CE ***	WT 1690		SCR 42 cm	

- * Donald 204K is a very deep, soggy made bull with lots of capacity, desirable muscle shape & a wide muscular rump.
- * Dam Countess 220H is a well bred young cow with a daughter retained.
- * Good performance on test ADG 4.41-111.
- * Very good calving ease CED, BW-top 9%
- * Recommended for heifers.



Lot 307

HAMCO DONALD 329K

DSH 329K 2282546 March 4, 2022

SVA THE DONALD 4030
TOPP DONALD 8061
 TA FOREVER 3738

BROOKING JASPER 6124
HAMCO LASSIE 172H
 HAMCO LASSIE 54E

SITZ INVESTMENT 660Z
 SVA EILEEN 9051
 MOHNEN WOLF CREEK 1871
 TC FOREVER 6123
 BROOKING BANK NOTE 4040
 BRUSETT CLOVA PRIDE Y136
 SANDPOINT J EDGAR HOOVER
 HAMCO LASSIE 99C

	CED	BW	WW	YW	MILK	FR	BW	WW	YW
EPD	+11	+0.2	+55	+105	+23	5.0	71	602	1222
ADG	4.44-111		WDA 3.02-87		CE ***	WT 1520		SCR 43 cm	

- * Donald 329K is a smaller framed, thick made bull with a nice Angus calving ease head.
- * Dam Lassie 172H is a good Jasper daughter that also has a yearling bull selling in this sale (Lot 146)
- * Very good calving ease CED- top 6%, BW- top 15%, WW, YW- top 45% or better
- * Highly recommended for heifers



REFERENCE SIRE (see page 33)

TOPP 38 SPECIAL 9725 1 SON SELLS

Lot 308

HAMCO SPECIAL 325K

AGH 325K 2281414 March 3, 2022

BALDRIDGE 38 SPECIAL
TOPP 38 SPECIAL 9725
 TA BARBARA 3702

TOPP CAPITALIST 5347
HAMCO LUCY 102G
 HAMCO LUCY 42E

EF COMMANDO 1366
 BALDRIDGE ISABEL Y69
 MOHNEN WOLF CREEK 1871
 TC BARBARA 3088
 CONNEALY CAPITALIST 028
 TA 6530 RUBY 3721
 S A V WEST RIVER 2066
 HAMCO LUCY 204C

	CED	BW	WW	YW	MILK	FR	BW	WW	YW
EPD	+14	-2.1	+47	+70	+26	5.0	69	696	1093
ADG	3.38-83		WDA 2.94-85		CE ***	WT 1615		SCR 40.5cm	

- * Special 325K is a smaller framed bull that is built like a tank- wide, deep, thick, well muscled with a nice Angus head.
- * Dam Lucy 102G is a well bred cow- Capitalist out of a West River cow.
- * We used this bull in our herd last year to breed some of our sale heifers.
- * Very good calving ease CED, BW- top 2% or better.
- * Highly recommended for heifers.



REFERENCE SIRE 1 SON SELLS

Topp Century 9834

Reg # (Cdn2276523)

EF Authentic 0829 SVA The Donald 4030
S: TC Freal 625 D: Topp Flower 7927
TC Grmkaer 4063 Topp Flower 4305

CAA	CED	B.W.	W.W.	Y.W.	Milk
EPD	+6.0	+2.2	+69	+134	+46

- * Topp Century 9834 was purchased from the 2021 Topp Angus Sale.
- * He is very impressive, deep middled, thick made bull with lots of eye appeal.
- * A lot of good bulls in his pedigree. He is a performance bull with WW, YW, Milk-top 10% or better
- * He has sired some very good offspring.



Lot 309 HAMCO CENTURY 556K

DSH 556K 2287390 April 75, 2022

TC FREAL 625 EF AUTHENTIC 0829
TOPP CENTURY 9834 TC GRMAKER 4063
TOPP FLOWER 7927 SVA THE DONALD 4030
BON VIEW WINTON 1342 TOPP FLOWER 4305
BLACK HAMCO ELBA 78Y BAR HEART WINTON
FET-A-LONG ELBA 302 BON VIEW GAMMER 440
TLA NORTHERN SAMURAI
GET-A-LONG ELBA 412

	CED	BW	WW	YW	MILK	FR	BW	WW	YW
EPD	0.0	+2.1	+36	+64	+32	6.0	88	643	1193
ADG	3.68-92		WDA 3.20-93	CE *	WT 1525	SCR 41 cm			

- * Century 556K is a long bodied bull with a wide muscular rump, good hair, & a nice Angus head.
- * Dam Elba 78Y is a proven cow that is an ET daughter out of the foundation Angus bull –Bonview Winton. She has produced an CAA Elite daughter & bulls to A-8 Ranches, David Jones & B&K Farms
- * Very good maternal genetics in this bull's pedigree. His daughters will be good.
- * Recommended for cows.



Lot 309

REFERENCE SIRE (see page 31)

Lot 310 HAMCO BIG SKY 407K

DSH 407K 2282614 March 11, 2022

MUSGRAVE BIG SKY CONNEALY EARNAN 076E
TOPP BIG SKY 7046 SAV PRIMROSE 7861
TA MARCIA 0616 VIN-MAR FOCUS IN 8847
JANNSEN ATLANTA 5013 TC MARCIA 6170
HAMCO COUNTESS 314F S A V HARVESTOR 0338
HAMCO COUNTESS 431B(ELITE) S A V MISS BOBBIE 0045
PEAK DOT PREDOMINANT 68W
BLACK HAMCO COUNTESS 47T

	CED	BW	WW	YW	MILK	FR	BW	WW	YW
EPD	+1.0	+4.0	+57	+104	+25	6.1	96	718	1324
ADG	4.10-103		WDA 3.54-103	CE *	WT 1785	SCR 43.5cm			

- * Big Sky 407K is a larger framed, powerfully built bull with extra depth, width & thickness,
- * Dam Countess 314F is a good proven cow that has produced bulls to Brett Campbell & a daughter retained.
- * Good performance WW, YW– top 40% or better.
- * Recommended for cows

TOPP BIG SKY 7046 1 SON SELLS



Lot 310



REFERENCE SIRE 1 SON SELLS

Hamco Colonel 14F

Reg # (Cdn) 2046647

Baldrige Xpand X743 SAV Resource 1441
S: **Baldrige Colonel C251** D: **Topp Bessie Heiress 6088**
Baldrige Isabel Y69 SAV Bessie Heiress 1412

CAA CED B.W. W.W. Y.W. Milk
EPD +6.0 +0.7 +51 +111 +23

- * Colonel 14F was purchased in dam Heiress 6088 from Topp Angus
- * Sired by the popular American bull Baldrige Colonel & out of an ET Resource SAV daughter.
- * He has developed into an impressive bull.
- * Moderate calving ease-top 30% or better & WW, YW in top 40% or better



Lot 311 HAMCO COLONEL 471K

DSH 471K 2227292 March 18, 2022

BALDRIDGE COLONEL C251 BALDRIDGE XPAND X743
HAMCO COLONEL 14F BALDRIDGE ISABEL Y69
TOPP BESSIE HEIRESS 6088 SAV RESOURCE 1441
SAV BESSIE HEIRESS 1412
S A V BISMARCK 5682 G A R GRID MAKER
HAMCO TIBBIE 121A S A V ABIGAIL 0451
BLACK HAMCO TIBBIE 501Y PRAIRIELANE 7451-2014-5004
BLACK HAMCO TIBBIE TRIUMPH 34K

	CED	BW	WW	YW	MILK	FR	BW	WW	YW
EPD	+2.0	+1.3	+52	+91	+26	6.0	90	758	1244
ADG	3.76-94		WDA 3.45-100	CE *		WT 1620	SCR 45 cm		

- * Colonel 471K is a very good, correct made, very wide made bull with extra length & a nice Angus head.
- * Dam Tibbie 121 is a proven daughter of the female maker Bismarck & has sons to Bernhad Abram, Todd Kozera, Chris Wimmer & 2 retained daughters.
- * Recommended for cows.



REFERENCE SIRE 1 SON SELLS

Hamco Freal 1F

Reg # (Cdn) 2046645

EF Authentic 0829 Circle A Mogul 3463
S: **TC Freal 625** D: **Topp Marcia 6014**
TC Grmaker 4063 TA Marcia 0616

CAA CED B.W. W.W. Y.W. Milk
EPD +10.0 +0.3 +52 +90 +27

- * We purchased Topp Marcia 6014 as a pregnant heifer from Topp Angus.
- * Freal 1F has developed into an impressive bull.
- * Very good calving ease—CED, BW-top 6%, WW, YW, Milk— top 20%
- * Very good, thick, correct made, & quiet
- * Calving ease with performance.



TC Freal 625



Lot 312 HAMCO FREAL 434K

DSH 434K 2285163 March 14, 2022

TC FREAL 625 EF AUTHENTIC 0829
HAMCO FREAL 1F TC GRMAKER 4063
TOPP MARCIA 6014 CIRCLE A MOGUL 3463
S A V ANGUS VALLEY 1867 TA MARICA 0616
HAMCO COUNTESS 123E S A V IRON MOUNTAIN 8066
HAMCO COUNTESS 391C S A V MAY 2397
PEAK DOT PREDOMINANT 68W
BLACK HAMCO COUNTESS 517W

	CED	BW	WW	YW	MILK	FR	BW	WW	YW
EPD	+3.0	+2.1	+51	+92	+23	6.7	90	697	1196
ADG	3.59-95		WDA 3.29-95	CE *		WT 1685	SCR 39.5cm		

- * Freal 434K is a very good, well muscled bull with a wide rump, extra length & a nice Angus head.
- * Dam Countess 123E is a proven Angus Valley daughter that has produced bulls to Last Straw Cattle & Norman Gauthier.
- * Balanced EPDs- all top 60% or better
- * Recommended for cows



Thank you to all of our 2023 buyers

EUR Ranches	Hawkeye Ranching	Kopec Farms	Kevin Olmstead
Maple Meadows Farm	A-8 Ranches	Heart Valley Angus	Legall Farms
Philgo Farms	Pat McKibbin	Leonard Kohler	Lee Wirgau
Lone Country Ranch	Travis Clark	Darryl Sigvaldason	Kevin Drewniak
C & D Farms	Todd Kozera	Colin Hummel	Paul Trinick
Garry Klassen	David Harrison	Phillip Penner	Frank Wiebe
Dry Fork Ranch	Alfred Loewen	Cameron Friesen	Curt Stambuski
Richard Unrau	Keith & Rhena McMillan	Jameson's Rolling Lane	Riverdale Colony
Spruceholm Ranch	Ed Grift	Gerelus Farms	Ron Allan
David Yablonski	Darwin Claeys	Duane Zimmer	Riedbow Dairy
Ryan Farrell	Devon Meisner	Grass River Stock Farms	Jason Hooper
Darryl Loehmer	Millsoft Colony	Russell Wohlgemuth	Tim Unrau
MDJ Farms	Scott Ellis	Darren Gamache	Kenton Doerksen
Brad Nelson	Stone Ridge Farms	Edwin Henderson	Terry Wood
Common Farms	Taras Turko	Tony & Charisse Arpin	Jim & Andrew Evans
Madill Grain & Cattle	Gerald Mangin	Fair Haven Farms	Jared Dyck
Sunny Banks Farms	Plett Stock Farms	Adam Hopcraft	Justin Hearn
Riverpride Farms	Sweetridge Farms	Wes Meggison	Cypress Colony
Dion Bros	Jim Strain	Brantwood Colony	Ross & Austin Kemp
Laurie & Shane Gardiner	Dale Wood	Damar Farms	Doug Sigurdson
Tanner Anderson	Beck Farms	Jeff Friesen	Russell Family Farms
McGee Livestock	Divorne Farms	Jeremiah Evan	Dennis Curtis
Bridgen Bros	R5 Cattle	Brian Sillen	David Caird
Cory Wheelans	Andrew Elias	John McKay	Andrew Evans
Smolinski Farms	Keith Hoepfner	Denbie Ranch	Mark O'Connor
Prime Ridge Stock Farms	Art Langrell	John Orr	Scott & Lanny Gardiner
Dwight Hallick	Clayton Grant	William Turner	Tom Robson
Conrad Wall	Gary Mickaluk	Little Boyne Acres	Dan Darling
Brandon Smith	Darcey Mickaluk	Five Star Ranch	Grant Erickson
Paul LaBelle	Shayne Kinley	Wynd River Frms	Remco Farms
Eaglebrook Farms	SMB Angus	Crystal Creek Cattle	Tyler Todoruk
Jason Teeple	Dave Fehr	Larry Logan	Ian Finlay
Neil Claringbound	James Acutt	Sunny Ridge Stock Farms	Graydon Friesen
Clarion Colony	Red Diamond Farms	Morley & Meaghen Jones	Trent Thornborough
KT McPhail Farms	Ken Petrick	Fair Haven Farms	Ritzco Farms
Gulay Family Farms			

Terms: The terms of sale are cash or cheque payable at par. Settlement to be made immediately after the completion of the sale. All settlements must be made with the clerk of the sale before any cattle will be released.

Disputes: In case of disputes, bidding will be re-opened between the parties involved. If no further bid is made, the buyer will be the person from whom the auctioneer accepted the last bid. The auctioneer's decision of all disputes is final.

Announcements: All announcements made from the auction block will take precedence over the printed matter in the catalogue. Buyers should pay close attention to any such announcement.

Purchaser's Risk: Each animal becomes the risk of the purchaser as soon as sold.

Accidents: Although every precaution will be taken to protect the safety and comfort of buyers, neither the sale management nor the auctioneer assume any responsibility in this matter and disclaim any liability, legal or otherwise, in the event of accident or loss property.

Liabilities: All persons attending the sale do so at their own risk and sellers assume no liability, legal or otherwise, for any accidents occurring in or about the premises.

